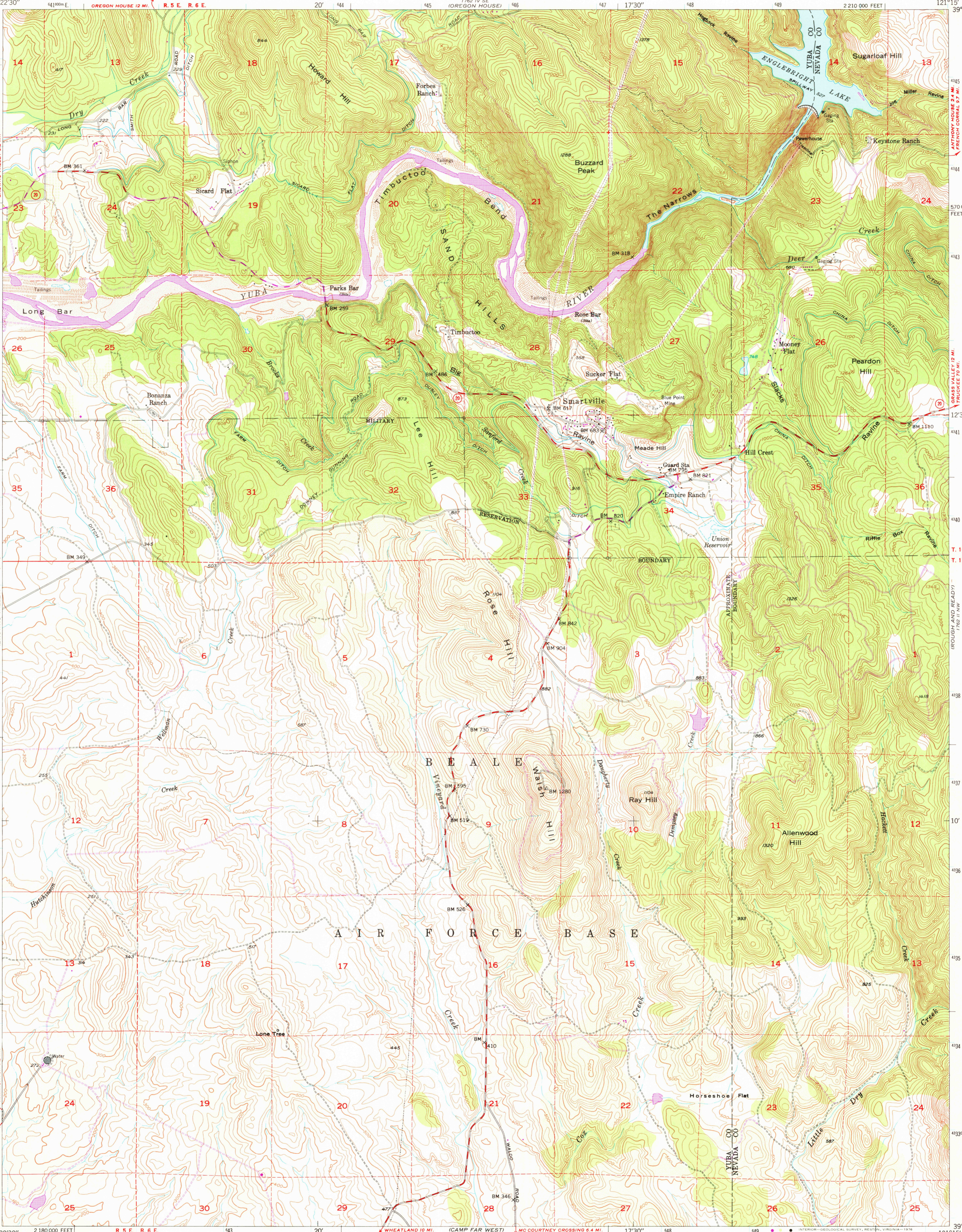


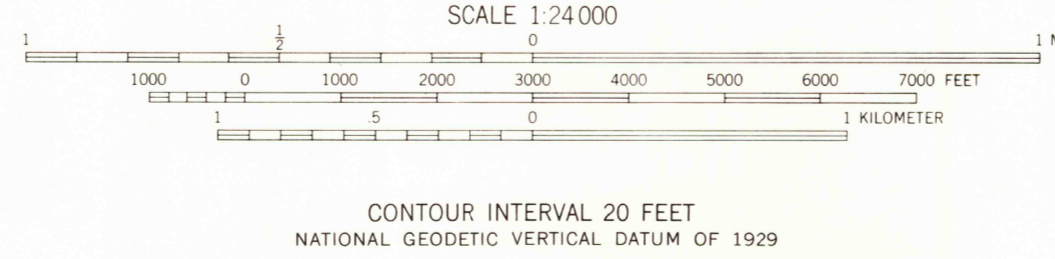
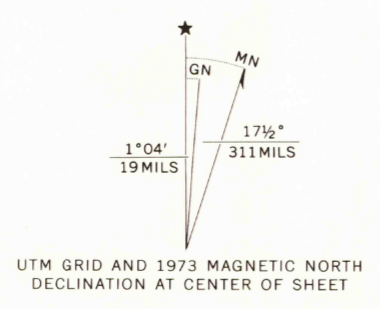
UNITED STATES
DEPARTMENT OF THE INTERIOR
GEOLOGICAL SURVEY

STATE OF CALIFORNIA
EARL WARREN, GOVERNOR
C. H. PURCELL, DIRECTOR OF PUBLIC WORKS
A. D. EDMONSTON, STATE ENGINEER

SMARTVILLE QUADRANGLE
CALIFORNIA
7.5 MINUTE SERIES (TOPOGRAPHIC)
NE 1/4 WHEATLAND 15' QUADRANGLE



Mapped, edited, and published by the Geological Survey
Control by USGS and USC&GS
Topography from aerial photographs by multiplex methods
Aerial photographs taken 1947. Field check 1949
Polyconic projection. 1927 North American datum
10,000-foot grid based on California coordinate system,
zone 2
1000-meter Universal Transverse Mercator grid ticks,
zone 10, shown in blue
Dashed land lines indicate approximate locations
Unchecked elevations are shown in brown
Revisions shown in purple compiled from aerial photographs
taken 1973. This information not field checked



ROAD CLASSIFICATION
HARD-SURFACE ALL WEATHER ROADS DRY WEATHER ROADS
Heavy-duty 4 LANE 16 LANE Improved dirt
Medium-duty 4 LANE 16 LANE Unimproved dirt
U. S. Route State Route
USGS
Historical File
Topographic Division
SMARTVILLE, CALIF.
NE 1/4 WHEATLAND 15' QUADRANGLE
N3907.5—W12115.7.5
1951
PHOTOREVISED 1973
AMS 1762 III NE—SERIES V865

JUN 0 3 1976