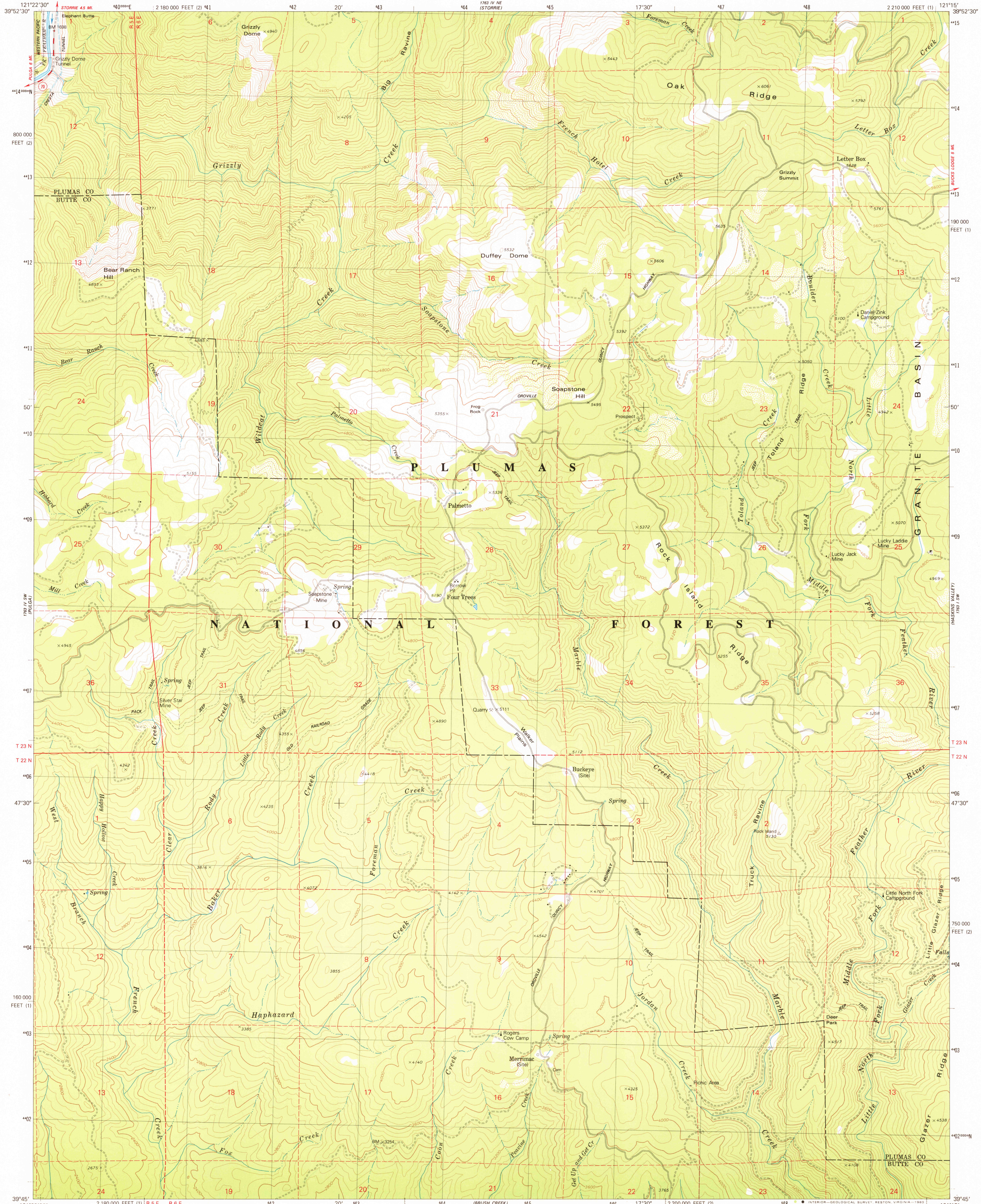
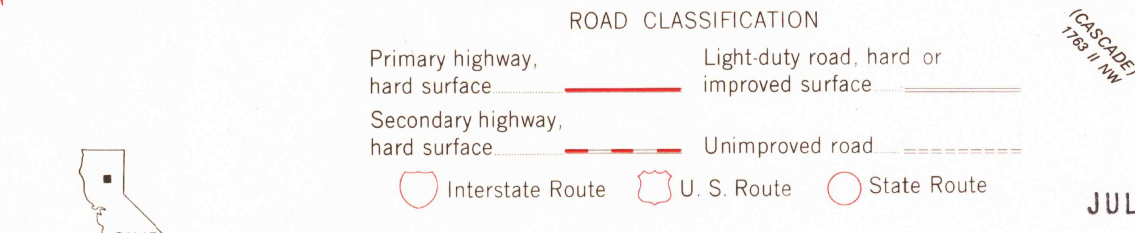
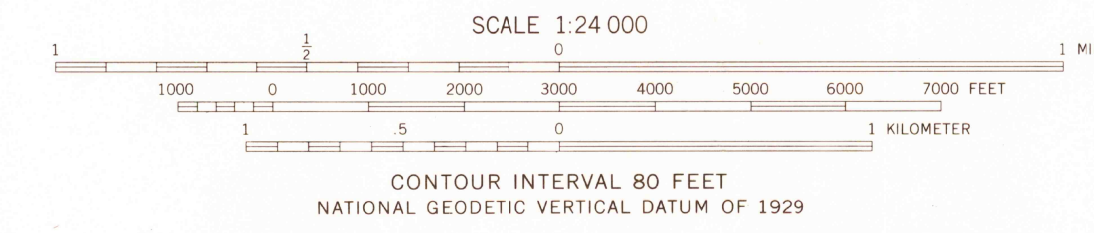
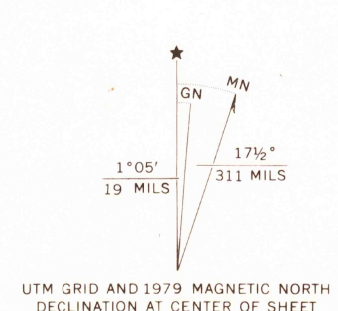


UNITED STATES
DEPARTMENT OF THE INTERIOR
GEOLOGICAL SURVEY

SOAPSTONE HILL QUADRANGLE
CALIFORNIA
7.5 MINUTE SERIES (TOPOGRAPHIC)
SE/4 PULGA 15' QUADRANGLE



Mapped, edited, and published by the Geological Survey
Control by USGS and NOS/NOAA
Topography by photogrammetric methods from aerial photographs taken 1973. Field checked 1974
Map edited 1979
Projection: California coordinate system zone 1 (Lambert conformal conic)
10,000-foot grid ticks based on California coordinate system, zones 1 and 2
1000-meter Universal Transverse Mercator grid, zone 10
1927 North American datum
To place on the predicted North American Datum 1983 move the projection lines 16 meters north and 91 meters east as shown by dashed corner ticks
There may be private inholdings within the boundaries of the National or State reservations shown on this map



THIS MAP COMPLIES WITH NATIONAL MAP ACCURACY STANDARDS
FOR SALE BY U. S. GEOLOGICAL SURVEY, DENVER, COLORADO 80225, OR RESTON, VIRGINIA 22092
A FOLDER DESCRIBING TOPOGRAPHIC MAPS AND SYMBOLS IS AVAILABLE ON REQUEST

USGS
Historical File
Topographic Division
SOAPSTONE HILL, CALIF.
SE/4 PULGA 15' QUADRANGLE
N3945-W12115/7.5
1979
DMA 1763 IV SE-SERIES V895

JUL - 8 1980