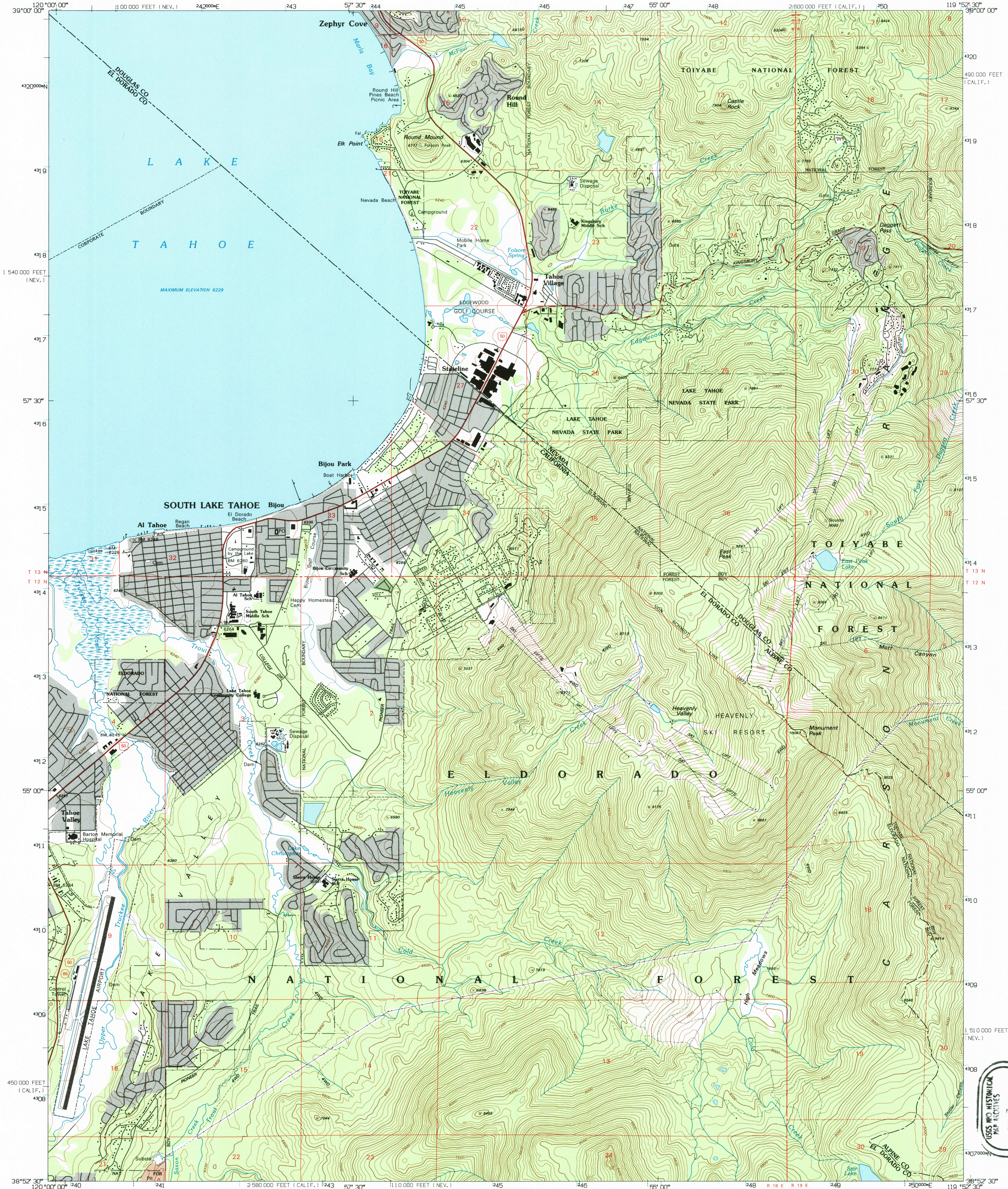
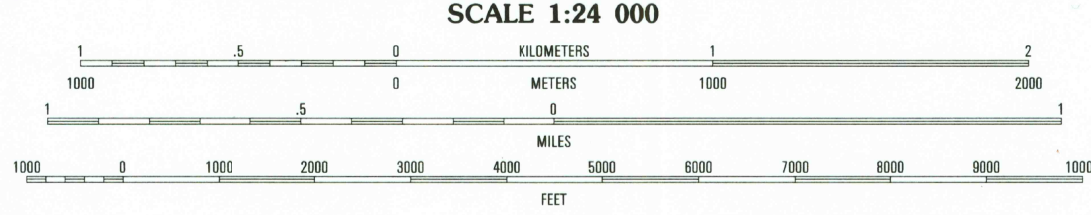
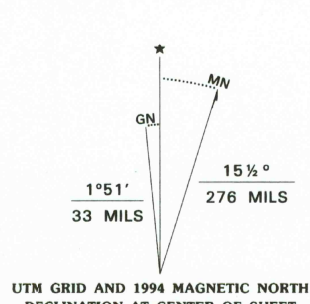


UNITED STATES
DEPARTMENT OF THE INTERIOR
GEOLOGICAL SURVEY

SOUTH LAKE TAHOE QUADRANGLE
CALIFORNIA-NEVADA
7.5 MINUTE SERIES (TOPOGRAPHIC)



Produced by the United States Geological Survey
Control by USGS and NOS/NOAA
Compiled from imagery taken 1953. Revised from imagery taken 1992
PLSS current as of 1993. Survey control current as of 1995
Map edited 1994. Contours and land elevations have not been revised
and may conflict with other content
North American Datum of 1927 (NAD 27). Projection and
blue 1000-meter Universal Transverse Mercator ticks, zone 11
10,000-foot ticks: California Coordinate System, zone 2
and Nevada Coordinate System, west zone
North American Datum of 1983 (NAD 83) is shown by dashed corner ticks
The values of the shift between NAD 27 and NAD 83 for 7.5-minute
intersections are obtainable from National Geodetic Survey NADCON software
There may be private inholdings within the boundaries of
the National or State reservations shown on this map



CONTOUR INTERVAL 40 FEET
SUPPLEMENTARY CONTOUR INTERVAL 20 FEET
NATIONAL GEODETIC VERTICAL DATUM OF 1929
TO CONVERT FEET TO METERS MULTIPLY BY 0.3048
TO CONVERT METERS TO FEET MULTIPLY BY 3.2808

THIS MAP COMPLIES WITH NATIONAL MAP ACCURACY STANDARDS
FOR SALE BY U.S. GEOLOGICAL SURVEY, P.O. BOX 25286, DENVER, COLORADO 80225
A FOLDER DESCRIBING TOPOGRAPHIC MAPS AND SYMBOLS IS AVAILABLE ON REQUEST



QUADRANGLE LOCATION

1	2	3	1 Meeks Bay
4	5	6	2 Glenbrook
7	8	9	3 Genoa
			4 Emerald Bay
			5 Minden
			6 Echo Lake
			7 Freel Peak
			8 Woodlands

ROAD CLASSIFICATION
Primary highway
hard surface
Secondary highway
hard surface
Unimproved road
Light-duty road, hard or
improved surface
Interstate Route
U.S. Route
State Route

SOUTH LAKE TAHOE, CA-NV
38119-H8-TF-024

1992

ADJOINING 7.5 QUADRANGLE NAMES

DMA 2661 IV NW-SERIES V895

