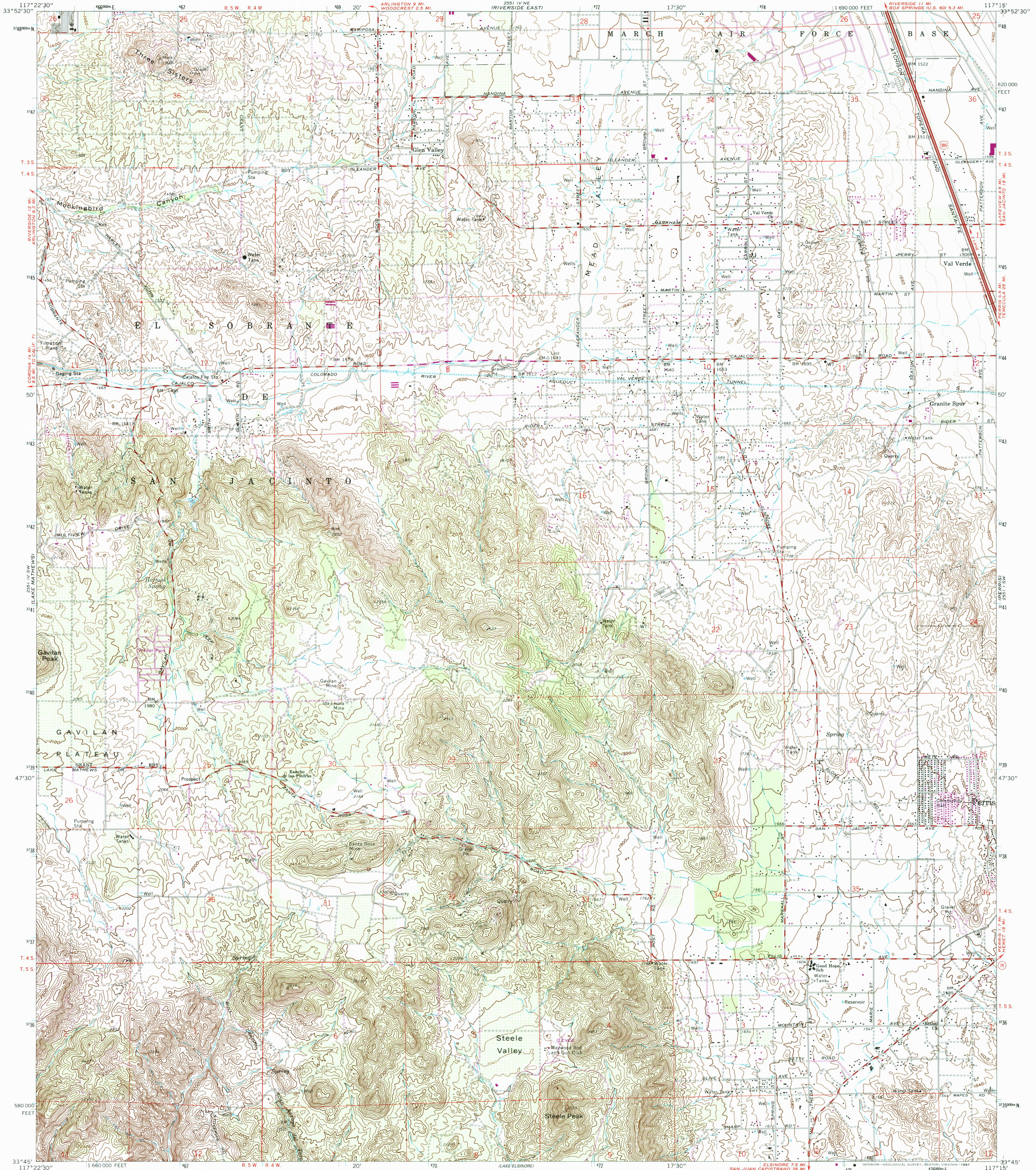


UNITED STATES
DEPARTMENT OF THE INTERIOR
GEOLOGICAL SURVEY

STEELE PEAK QUADRANGLE
CALIFORNIA—RIVERSIDE CO.
7.5 MINUTE SERIES (TOPOGRAPHIC)

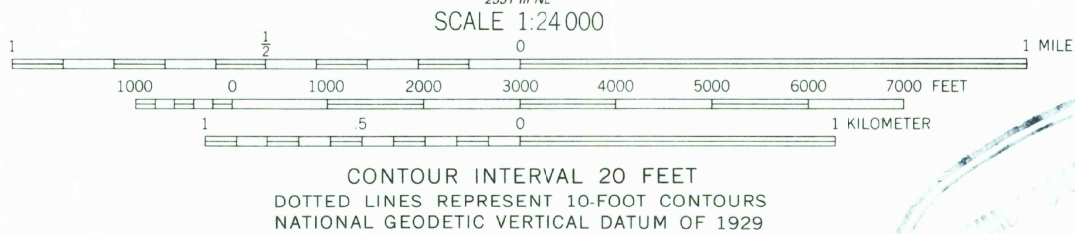


Mapped, edited, and published by the Geological Survey
Revised in cooperation with California Department of
Water Resources

Control by USGS, USC&GS, USCE and Metropolitan
Water District of Southern California
Topography by photogrammetric methods from aerial photographs
taken 1951. Field checked 1953. Revised from aerial
photographs taken 1966. Field checked 1967
Polyconic projection. 1927 North American datum
10,000-foot grid based on California coordinate system, zone 6
1000-meter Universal Transverse Mercator grid ticks,
zone 11, shown in blue

To place on the predicted North American Datum 1983
move the projection lines 83 meters east as shown
by dashed corner ticks
Fine red dashed lines indicate selected fence lines
Dotted land lines established by private survey
There may be private inholdings within the boundaries of the
National or State reservations shown on this map

Revisions shown in purple compiled from aerial photographs
taken 1973. This information not field checked



THIS MAP COMPLIES WITH NATIONAL MAP ACCURACY STANDARDS
FOR SALE BY U.S. GEOLOGICAL SURVEY, DENVER, COLORADO 80225, OR RESTON, VIRGINIA 22092
A FOLDER DESCRIBING TOPOGRAPHIC MAPS AND SYMBOLS IS AVAILABLE ON REQUEST

Map photoinspected 1978
No major culture or drainage changes observed

ROAD CLASSIFICATION
Heavy-duty ——— Light-duty ———
Medium-duty ——— Unimproved dirt ———
U.S. Route ——— State Route ———

STEELE PEAK, CALIF.

33117-G3-TF-024
PHOTOINSPECTED 1978
1967
PHOTOREVISED 1973
DMA 2551 IV SE—SERIES V895