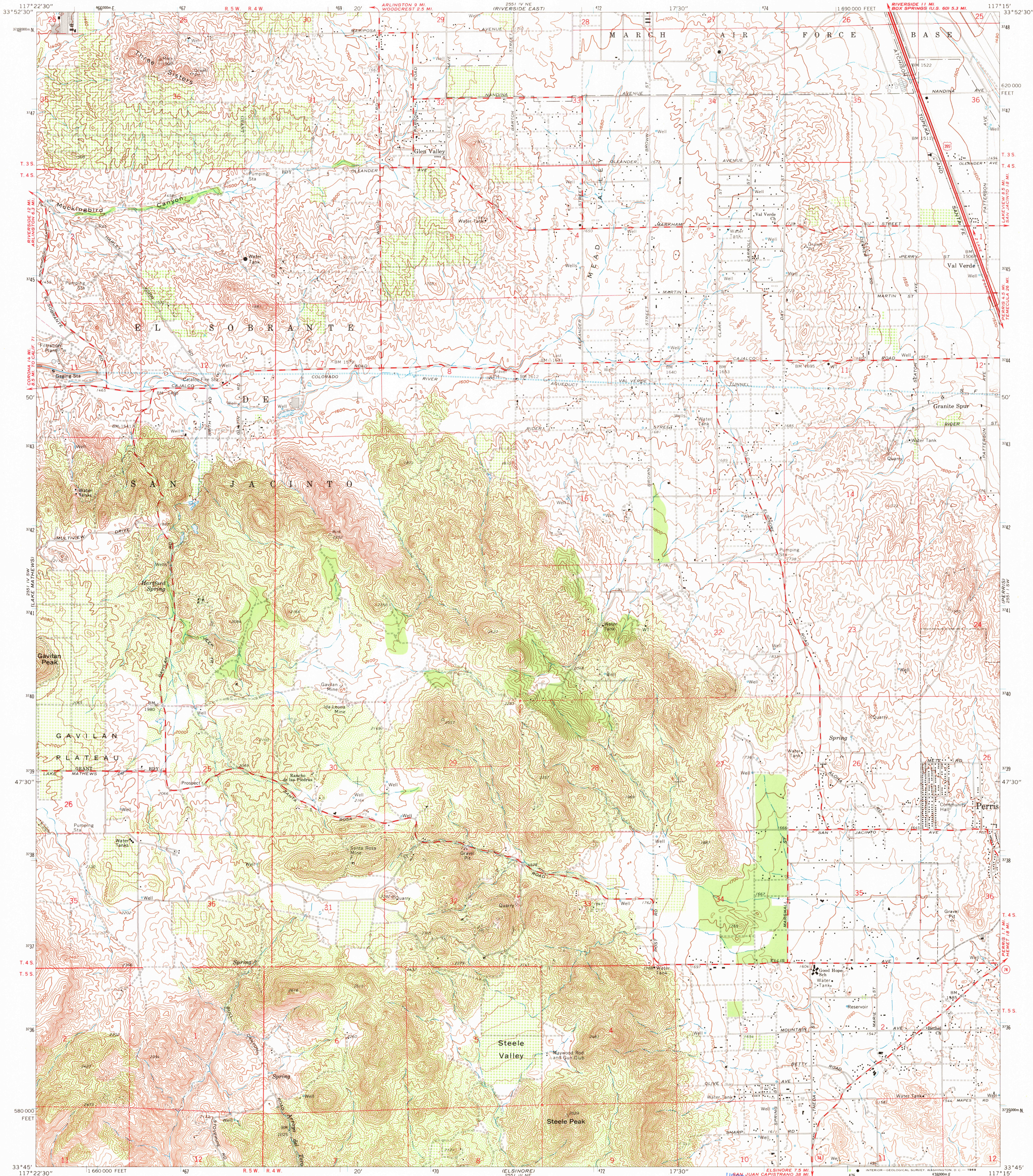


UNITED STATES
DEPARTMENT OF THE INTERIOR
GEOLOGICAL SURVEY

STEELE PEAK QUADRANGLE
CALIFORNIA—RIVERSIDE CO.
7.5 MINUTE SERIES (TOPOGRAPHIC)



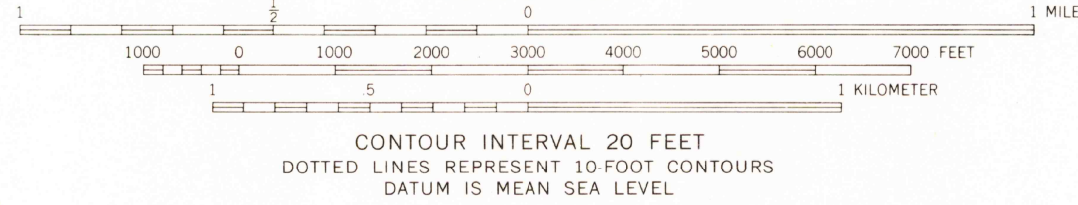
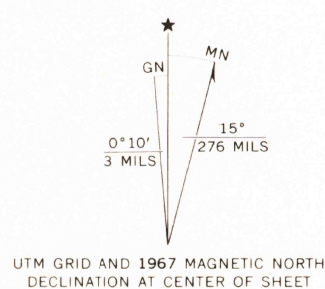
Mapped, edited, and published by the Geological Survey
Revised in cooperation with California Department of
Water Resources

Control by USGS, USC&GS, USCE, and Metropolitan
Water District of Southern California

Topography by photogrammetric methods from aerial photographs
taken 1951. Field checked 1953. Revised from aerial
photographs taken 1966. Field checked 1967

Polyconic projection. 1927 North American datum
10,000-foot grid based on California coordinate system, zone 6
1000-meter Universal Transverse Mercator grid ticks,
zone 11, shown in blue

Fine red dashed lines indicate selected fence lines
Dotted land lines established by private survey



THIS MAP COMPLIES WITH NATIONAL MAP ACCURACY STANDARDS
FOR SALE BY U.S. GEOLOGICAL SURVEY, DENVER, COLORADO 80225, OR WASHINGTON, D.C. 20242
A FOLDER DESCRIBING TOPOGRAPHIC MAPS AND SYMBOLS IS AVAILABLE ON REQUEST

U.S. Geological Survey
Historical File
Topographic Division



U.S.G.S.
FILE COPY
TOPOGRAPHIC DIVISION

ROAD CLASSIFICATION
Heavy-duty ——— Light-duty ———
Medium-duty ——— Unimproved dirt ———
U.S. Route ——— State Route ———

STEELE PEAK, CALIF.
SE/4 RIVERSIDE 15' QUADRANGLE
N3345—W11715/7.5

1967

AMS 2551 IV SE—SERIES V895

4760
QCT 2 0 1969