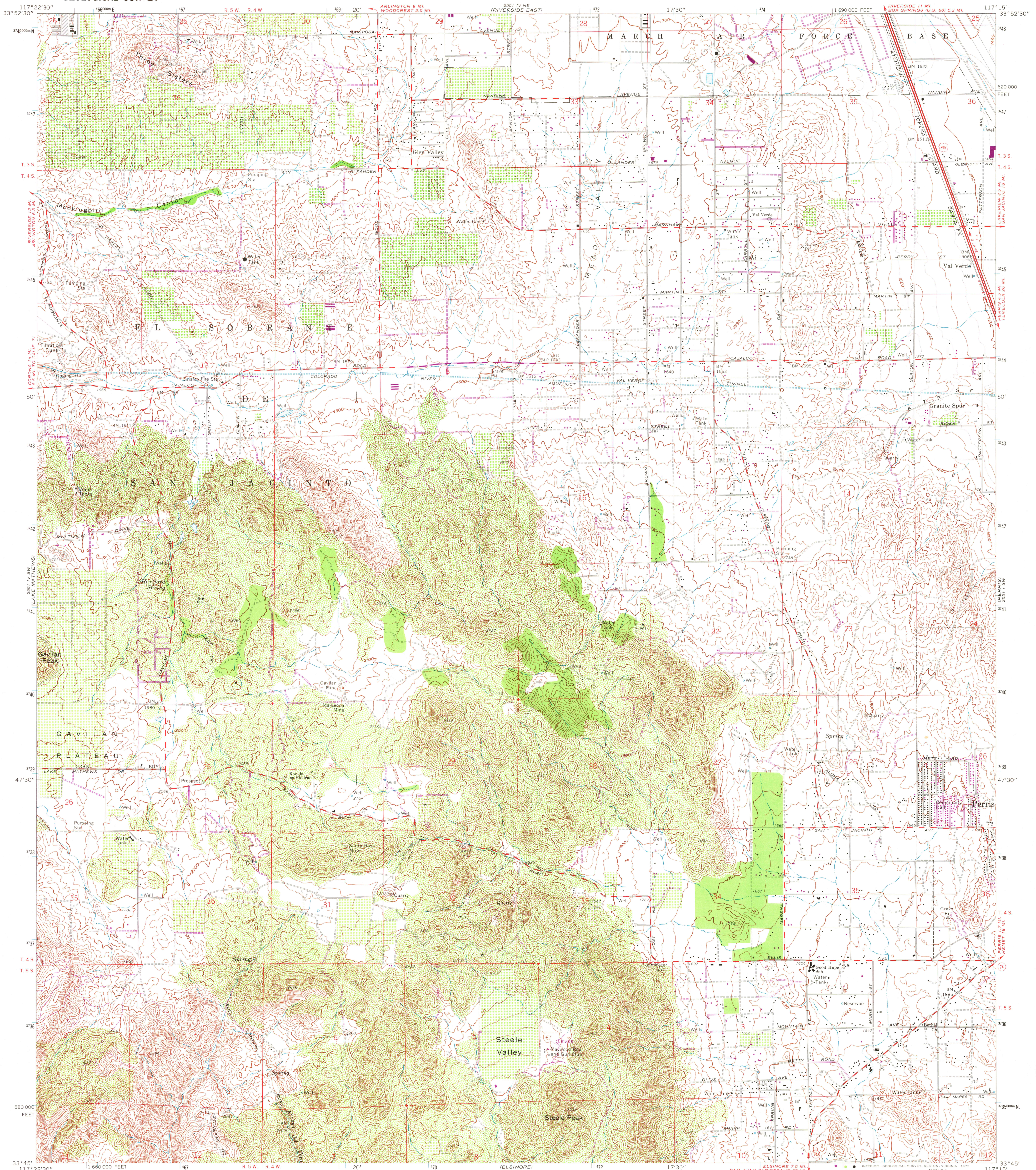


UNITED STATES
DEPARTMENT OF THE INTERIOR
GEOLOGICAL SURVEY

STEELE PEAK QUADRANGLE
CALIFORNIA—RIVERSIDE CO.
7.5 MINUTE SERIES (TOPOGRAPHIC)



Mapped, edited, and published by the Geological Survey
Revised in cooperation with California Department of
Water Resources
Control by USGS, USC&GS, USCE, and Metropolitan
Water District of Southern California
Topography by photogrammetric methods from aerial photographs
taken 1951. Field checked 1953. Revised from aerial
photographs taken 1966. Field checked 1967
Polyconic projection. 1927 North American datum
10,000-foot grid based on California coordinate system, zone 6
1000-meter Universal Transverse Mercator grid ticks,
zone 11, shown in blue
Fine red dashed lines indicate selected fence lines
Dotted land lines established by private survey

Revisions shown in purple compiled from aerial photographs
taken 1973. This information not field checked

SCALE 1:24,000
CONTOUR INTERVAL 20 FEET
DOTTED LINES REPRESENT 10-FOOT CONTOURS
NATIONAL GEODETIC VERTICAL DATUM OF 1929
THIS MAP COMPLIES WITH NATIONAL MAP ACCURACY STANDARDS
FOR SALE BY U.S. GEOLOGICAL SURVEY, DENVER, COLORADO 80225, OR RESTON, VIRGINIA 22092
A FOLDER DESCRIBING TOPOGRAPHIC MAPS AND SYMBOLS IS AVAILABLE ON REQUEST

ROAD CLASSIFICATION
Heavy-duty ——— Light-duty ———
Medium-duty ——— Unimproved dirt ———
U.S. Route ——— State Route ———
QUADRANGLE LOCATION
STEELE PEAK, CALIF.
N3345—W11715/7.5
1967
PHOTOREVISED 1973
AMS 2551 IV SE—SERIES V895