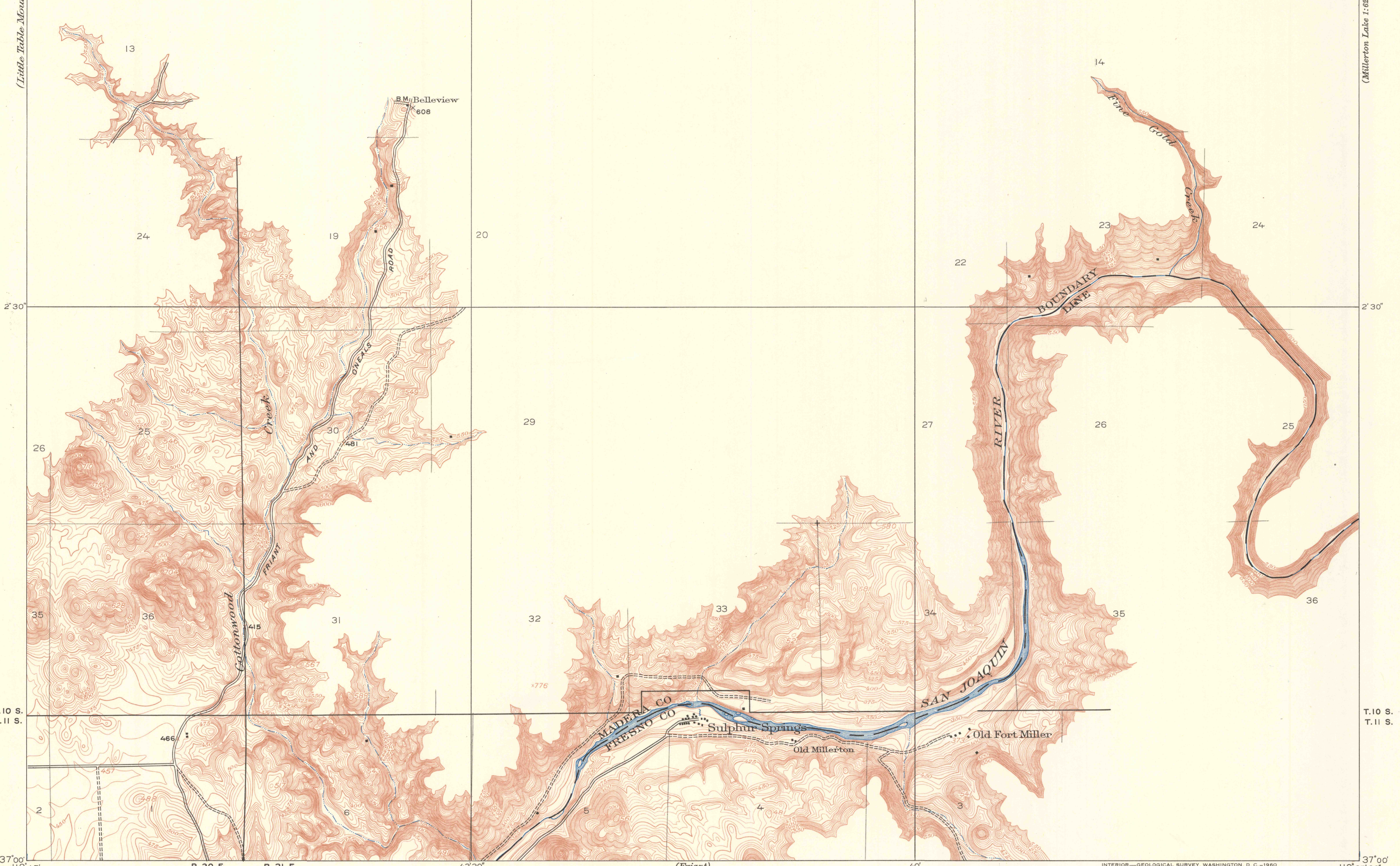


THIS AREA IS SHOWN ON THE MAP OF MILLERTON LAKE  
QUADRANGLE SURVEYED IN 1941-42, SCALE 1:62 500

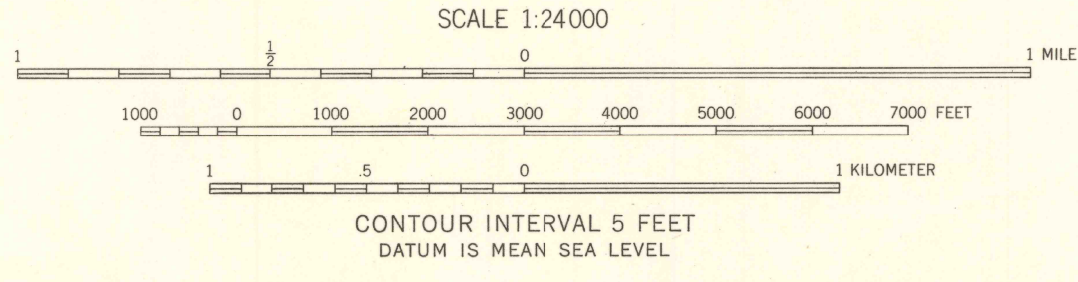
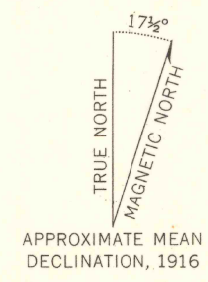
(Little Table Mountain)

(Millerton Lake 1:62 500)



W.H.Herron, Acting Chief Geographer.  
Geo.R.Davis, Geographer in charge.  
Topography by E.P.Davis.  
Control by C.F.Urquhart and L.F.Biggs.  
Surveyed in 1916.

(Lanes Bridge)



INTERIOR—GEOLOGICAL SURVEY, WASHINGTON, D. C.—1960  
WB 1467  
Polyconic projection

SULPHUR SPRINGS, CALIF.  
N 3700—W 11937.5/7.5

1916

FOR SALE BY U. S. GEOLOGICAL SURVEY, DENVER 25, COLORADO OR WASHINGTON 25, D. C.  
A FOLDER DESCRIBING TOPOGRAPHIC MAPS AND SYMBOLS IS AVAILABLE ON REQUEST

FILE COPY  
MAR 1 1960  
MAP INFORMATION OFFICE  
GEOLOGICAL SURVEY