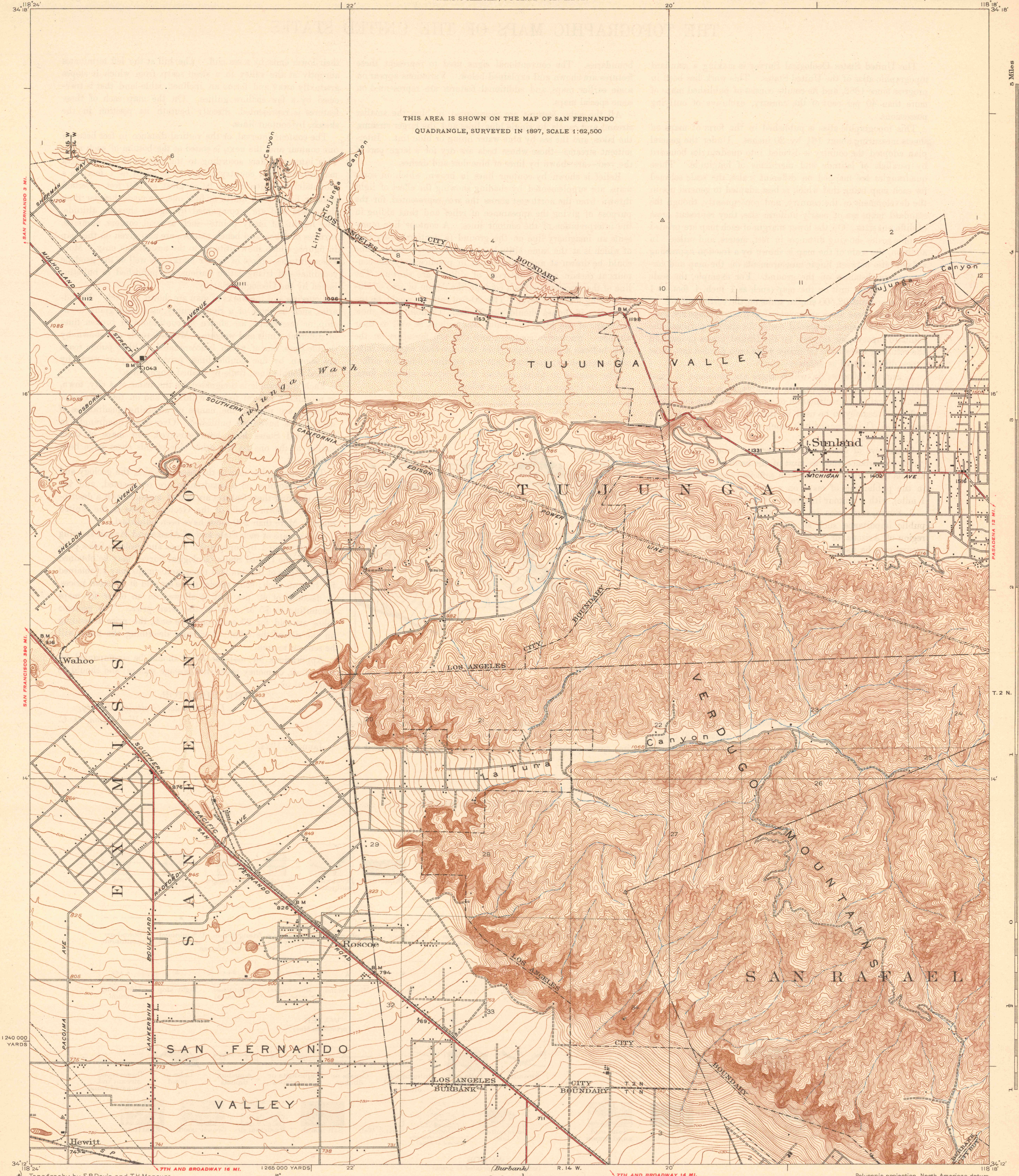


THIS AREA IS SHOWN ON THE MAP OF SAN FERNANDO
QUADRANGLE, SURVEYED IN 1897, SCALE 1:62,500



Topography by E.P. Davis and T.H. Moncre
Control in part by U.S. Coast and Geodetic Survey
Surveyed in 1924-1925

Scale 1:50,000
1 Mile
5000 Feet

Contour interval 5 feet and 25 feet
changing on the 1000 foot contour
Datum is mean sea level

Polyconic projection, North American datum
5000 yard grid based upon U.S. zone system, G