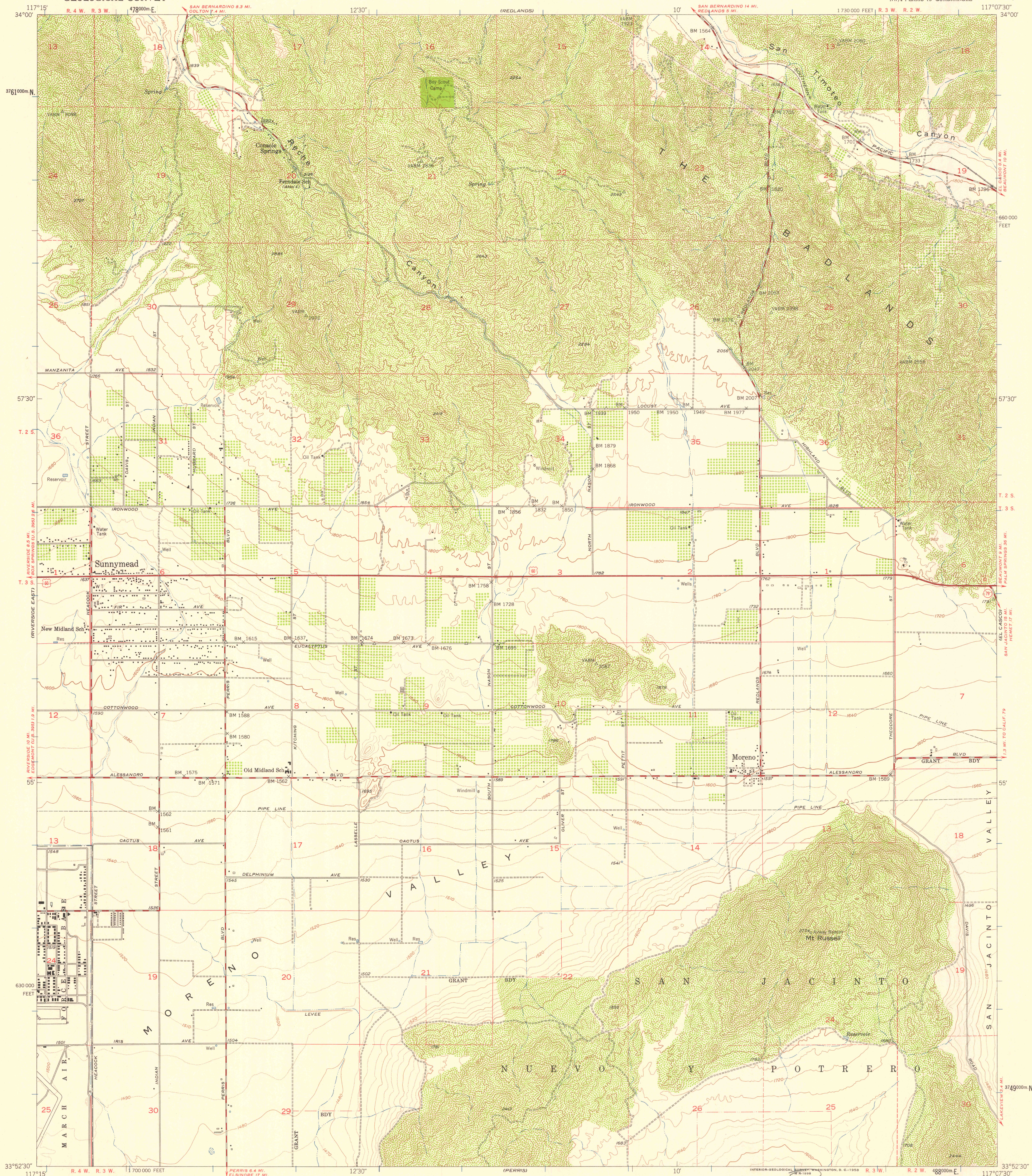


UNITED STATES  
DEPARTMENT OF THE INTERIOR  
GEOLOGICAL SURVEY

SUNNYMEAD QUADRANGLE  
CALIFORNIA—RIVERSIDE CO.  
7.5 MINUTE SERIES (TOPOGRAPHIC)  
NW/4 PERRIS 15' QUADRANGLE



Mapped, edited, and published by the Geological Survey  
Control by USC&GS and USCE  
Topography from aerial photographs by multiplex methods  
and by plane-table surveys 1953. Aerial photographs taken 1951.  
Polyconic projection. 1927 North American datum  
10,000-foot grid based on California coordinate system, zone 6  
Dashed land lines indicate approximate locations  
Unchecked elevations are shown in brown  
1000-meter Universal Transverse Mercator grid ticks,  
zone 11, shown in blue

TRUE NORTH  
MAGNETIC NORTH  
APPROXIMATE MEAN  
DECLINATION, 1953

SCALE 1:24000  
1 0 1000 2000 3000 4000 5000 6000 7000 FEET  
1 5 0 5 KILOMETER  
CONTOUR INTERVAL 40 FEET  
DOTTED LINES REPRESENT 10 FOOT CONTOURS  
DATUM IS MEAN SEA LEVEL  
THIS MAP COMPLIES WITH NATIONAL MAP ACCURACY STANDARDS  
FOR SALE BY U. S. GEOLOGICAL SURVEY, DENVER 2, COLORADO OR WASHINGTON 25, D. C.  
A FOLDER DESCRIBING TOPOGRAPHIC MAPS AND SYMBOLS IS AVAILABLE ON REQUEST

USGS  
Historical File  
Topographic Division



ROAD CLASSIFICATION  
Heavy-duty 4 LANE 16 LANE Light-duty  
Medium-duty 4 LANE 16 LANE Unimproved dirt  
U. S. Route State Route

U.S.G.S.  
FILE COPY  
TOPOGRAPHIC DIVISION

SUNNYMEAD, CALIF.  
NW/4 PERRIS 15' QUADRANGLE  
N3352.5-W11707.5/7.5  
1953

MAY 23 1958