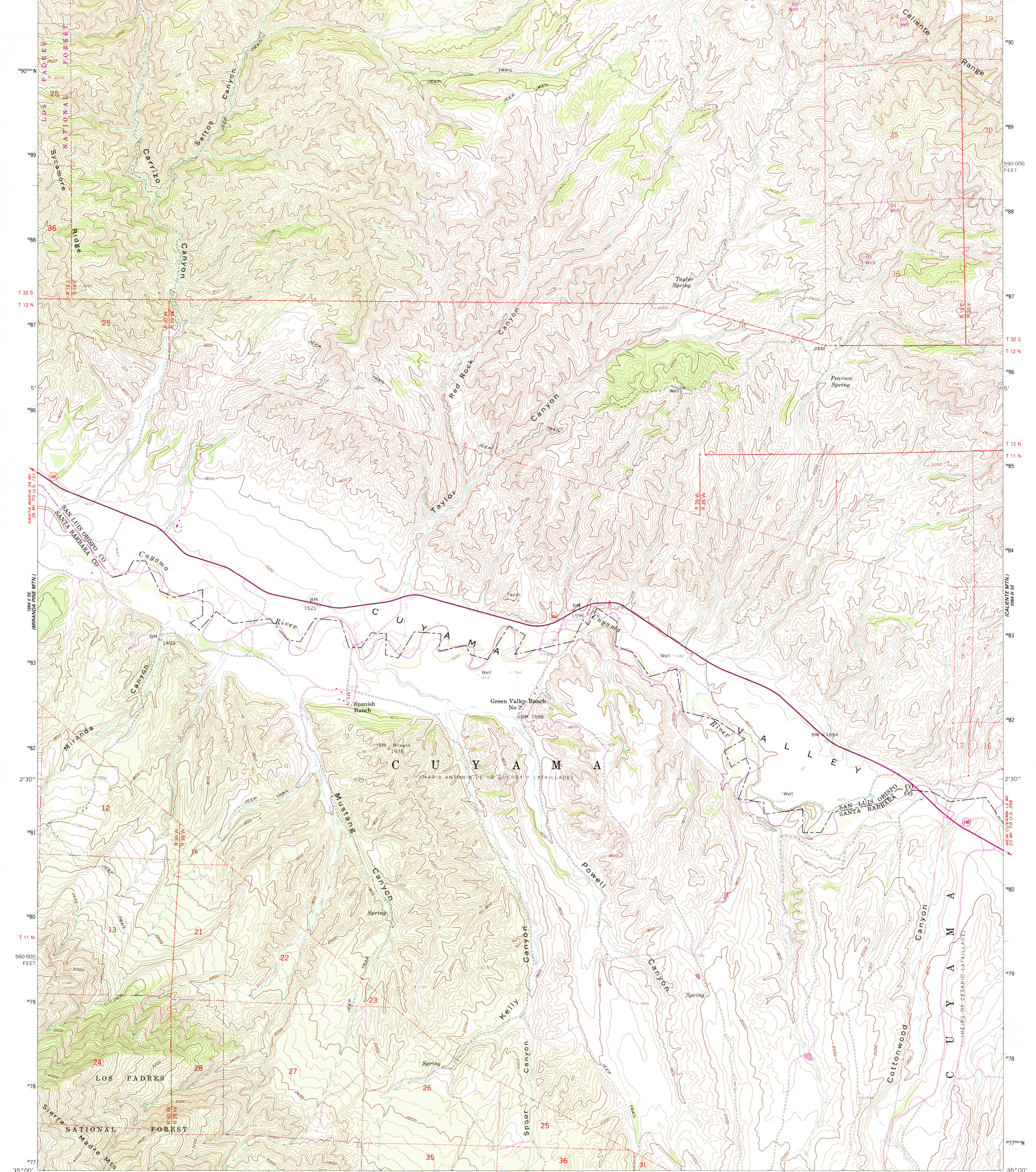
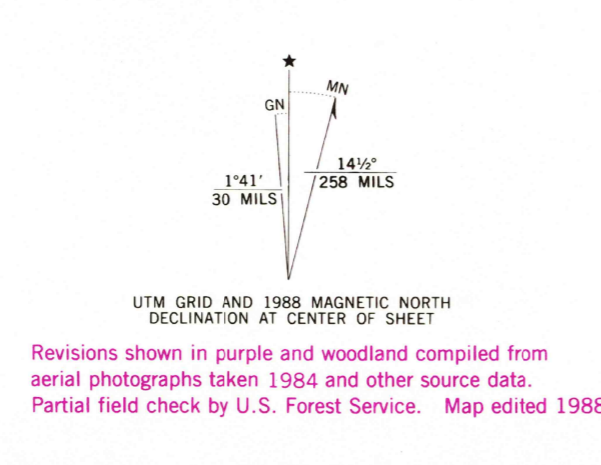


120°00' R 18 E R 19 E 128°00'E 29 30 57'30" 31 (2054 III NW (CHIMINEAS RANCH)) 33 34 55' 35 1 430 000 FEET 36 37 R 19 E R 20 E 119°52'30" 35°07'30"



Mapped, edited, and published by the Geological Survey
Control by USGS, NOS/NOAA and USCE
Topography from aerial photographs by photogrammetric methods
Aerial photographs taken 1953. Field check 1959
Polyconic projection. 1927 North American Datum
10,000-foot grid based on California coordinate system, zone 5
1000-meter Universal Transverse Mercator grid ticks,
zone 11, shown in blue
Certain land lines are omitted because of
insufficient data. Land lines updated in 1988
There may be private inholdings within the boundaries of
the National or State reservations shown on this map
To place on the predicted North American Datum 1983
move the projection lines 6 meters north and
87 meters east as shown by dashed corner ticks



THIS MAP COMPLIES WITH NATIONAL MAP ACCURACY STANDARDS
FOR SALE BY U. S. GEOLOGICAL SURVEY
DENVER, COLORADO 80225, OR RESTON, VIRGINIA 22092
A FOLDER DESCRIBING TOPOGRAPHIC MAPS AND SYMBOLS IS AVAILABLE ON REQUEST
Revisions shown in purple and woodland compiled from
aerial photographs taken 1984 and other source data.
Partial field check by U.S. Forest Service. Map edited 1988

ROAD CLASSIFICATION
Primary highway, hard surface
Secondary highway, hard surface
Interstate Route
U. S. Route
State Route
Light-duty road, hard or improved surface
Unimproved road

LOGO AND HISTORICAL MAP
MAR 15 1969
REC'D FILE COPY

TAYLOR CANYON, CALIF.
SW 4 CALIENTE MTN. 15' QUADRANGLE
35119-AB-TF-024
1959
PHOTOREVISED 1988
DMA 2054 III SW-SERIES V895