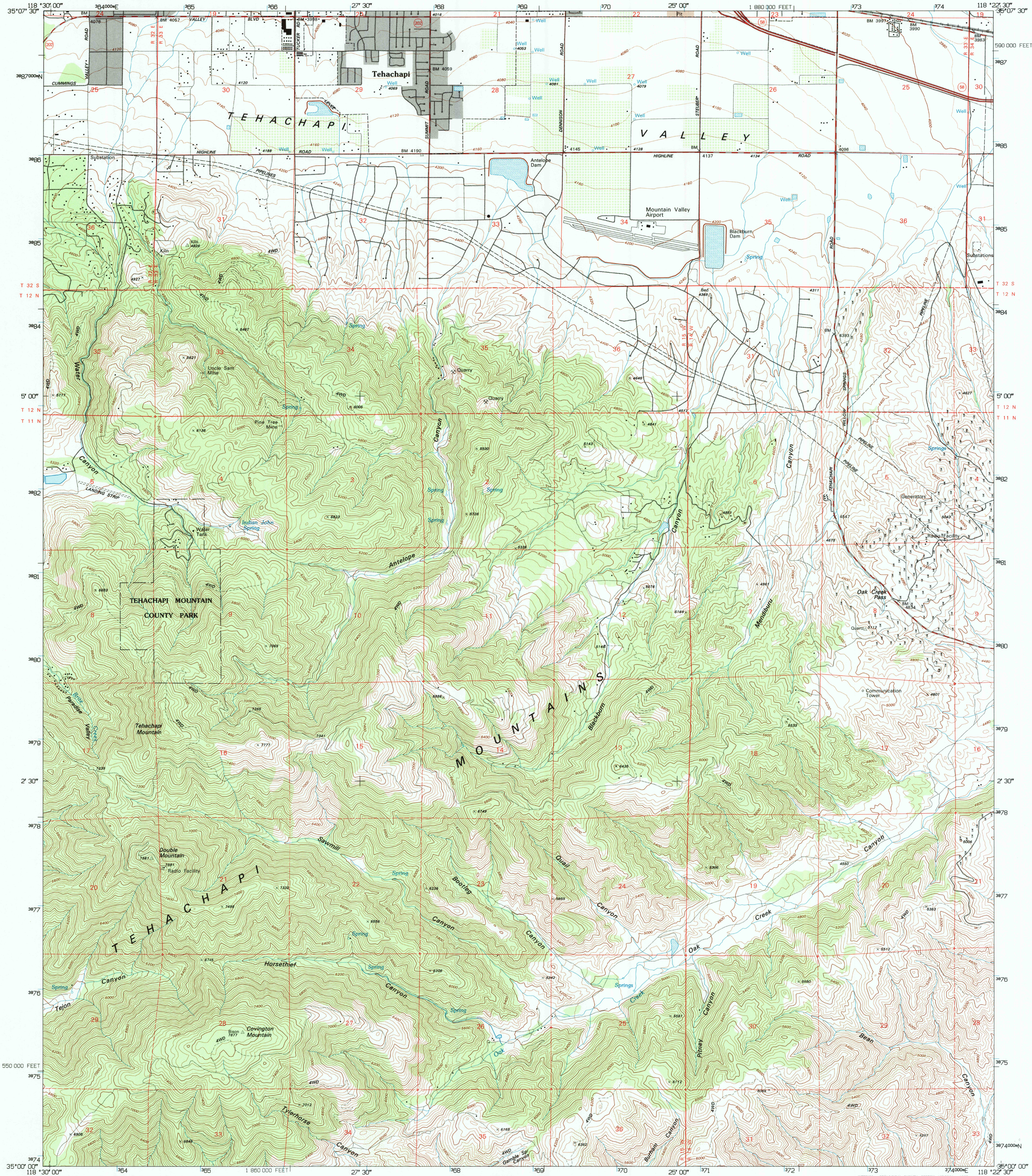
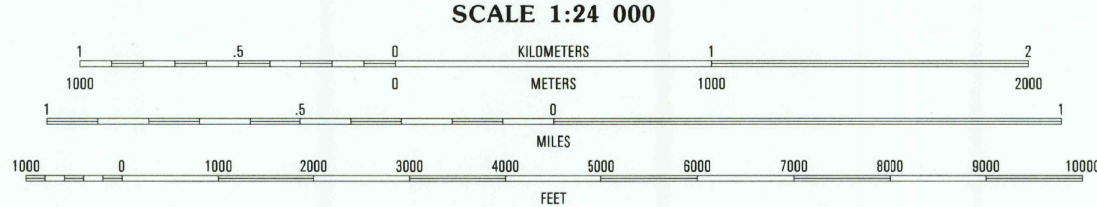
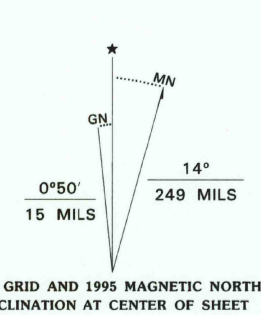


UNITED STATES  
DEPARTMENT OF THE INTERIOR  
GEOLOGICAL SURVEY

TEHACHAPI SOUTH QUADRANGLE  
CALIFORNIA-KERN CO.  
7.5-MINUTE SERIES (TOPOGRAPHIC)



Produced by the United States Geological Survey  
Control by USGS and NOS/NOAA  
Compiled from imagery dated 1963. Revised from imagery dated 1992. PLSS and survey control current as of 1966. May edited 1995. Contours and land elevations have not been revised and may conflict with other content.  
North American Datum of 1927 (NAD 27). Projection and blue 1000-meter ticks: Universal Transverse Mercator, zone 11 10 100-foot ticks: California Coordinate System, zone 5 North American Datum of 1983 (NAD 83) is shown by dashed corner ticks. The values of the shift between NAD 27 and NAD 83 for 7.5-minute intersections are obtainable from National Geodetic Survey NADCON software.  
Fine red dashed lines indicate selected fence and field lines where generally visible on aerial photographs. This information is unchecked.



CONTOUR INTERVAL 40 FEET  
SUPPLEMENTARY CONTOUR INTERVAL 20 FEET  
NATIONAL GEODETIC VERTICAL DATUM OF 1929  
TO CONVERT FEET TO METERS MULTIPLY BY 0.3048  
TO CONVERT METERS TO FEET MULTIPLY BY 3.2808

THIS MAP COMPLIES WITH NATIONAL MAP ACCURACY STANDARDS  
FOR SALE BY U.S. GEOLOGICAL SURVEY  
DENVER, COLORADO 80225, OR RESTON, VIRGINIA 22092  
A FOLDER DESCRIBING TOPOGRAPHIC MAPS AND SYMBOLS IS AVAILABLE ON REQUEST



QUADRANGLE LOCATION

ROAD CLASSIFICATION	
Primary highway	Light-duty road, hard or improved surface
Secondary highway	Unimproved road
Interstate Route	U.S. Route
State Route	

1	2	3
4	5	6
7	8	9

1 Keene  
2 Tehachapi North  
3 Tehachapi NE  
4 Cummings Mountain  
5 Monolith  
6 Liebre Twins  
7 Tylerhorse Canyon  
8 Willow Springs

TEHACHAPI SOUTH, CA

35118-A4-TF-024

1992

DMA 2354 III SW-SERIES V895

