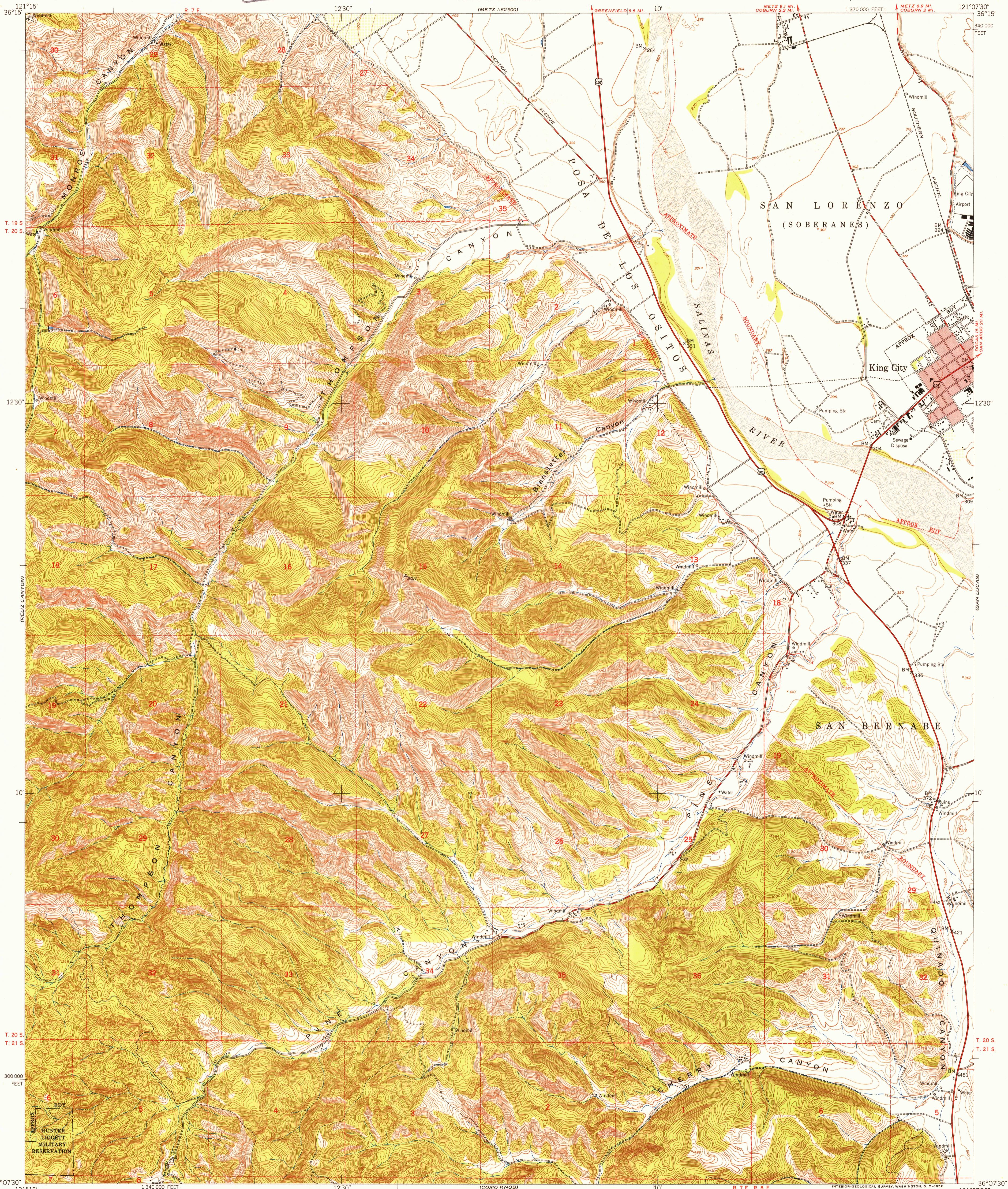
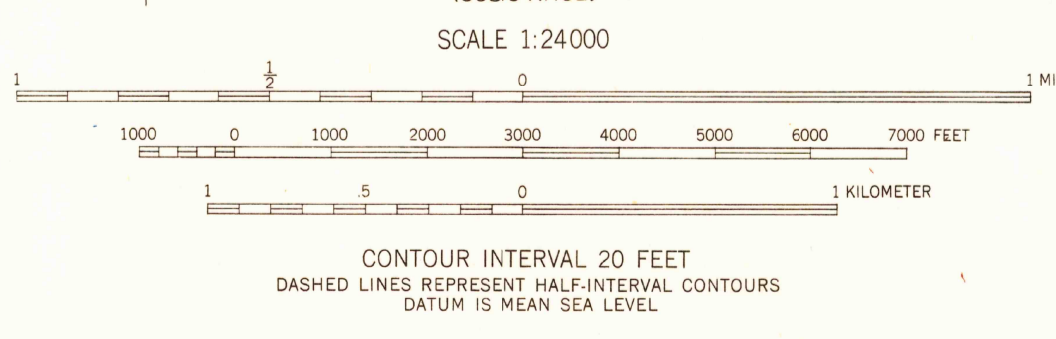
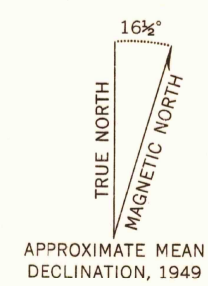


U.S.G.S.
FILE COPY
Topographic and Mapping



Maped by the Army Map Service
Published for civil use by the Geological Survey
Control by USGS, USC&GS, and USCE
Topography from aerial photographs by multiplex methods
Aerial photographs taken 1947. Field check 1949
Polyconic projection. 1927 North American datum
10,000-foot grid based on California coordinate system,
zone 4
Red tint indicates area in which only
landmark buildings are shown
Unchecked elevations are shown in brown
Dashed land lines indicate approximate locations



USGS
Historical File
Topographic Division

ROAD CLASSIFICATION	
Heavy-duty	4 LANE 6 LANE
Medium-duty	4 LANE 6 LANE
	Unimproved dirt

U.S. Route State Route

U.S.G.S.
FILE COPY
Topographic and Mapping

THOMPSON CANYON, CALIF.
NW/4 KING CITY 15' QUADRANGLE
N3607.5-W12107.5/7.5
1949

THIS MAP COMPLIES WITH NATIONAL MAP ACCURACY STANDARDS
FOR SALE BY U. S. GEOLOGICAL SURVEY, FEDERAL CENTER, DENVER, COLORADO OR WASHINGTON 25, D. C.
A FOLDER DESCRIBING TOPOGRAPHIC MAPS AND SYMBOLS IS AVAILABLE ON REQUEST