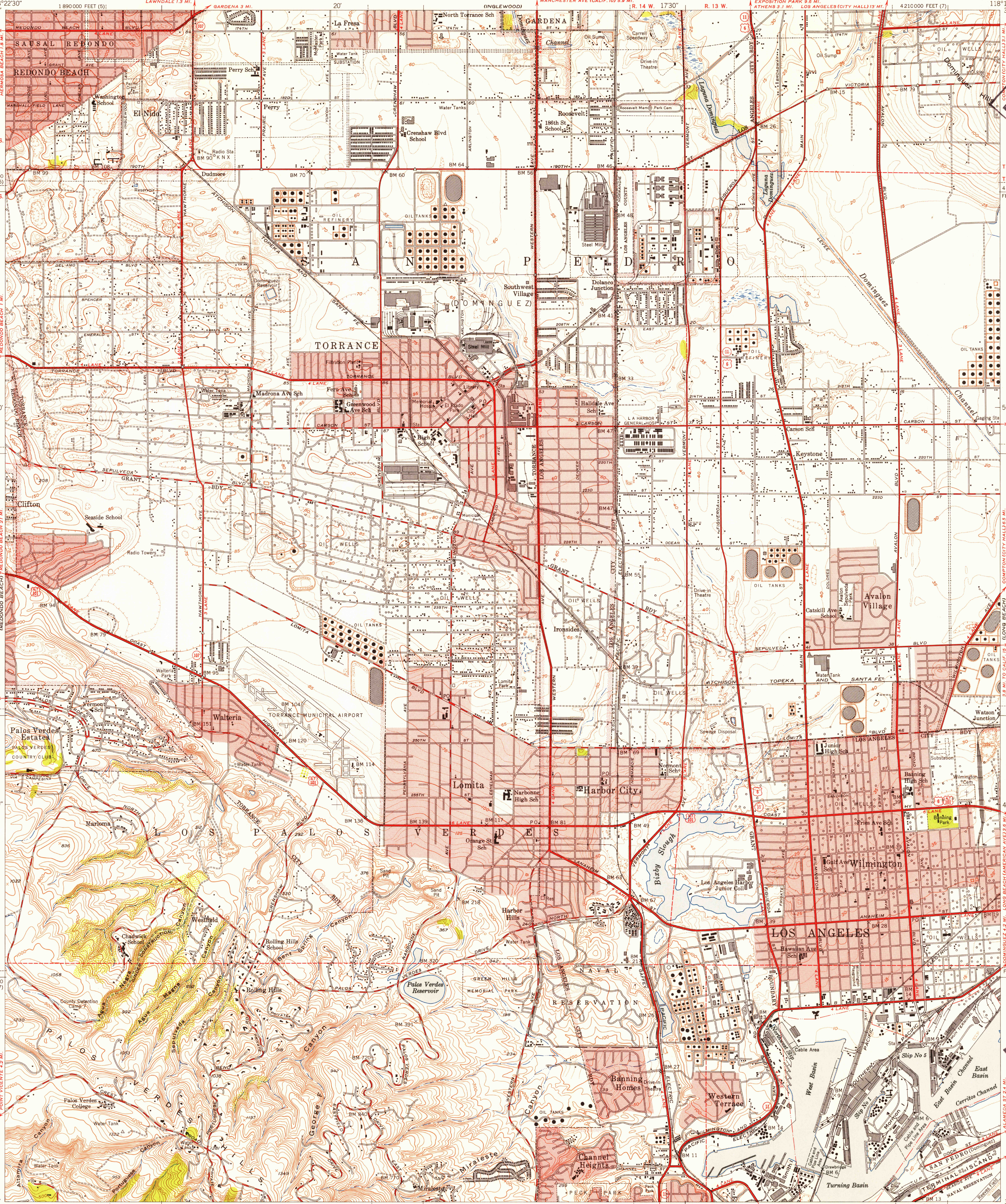


UNITED STATES
DEPARTMENT OF THE INTERIOR
GEOLOGICAL SURVEY

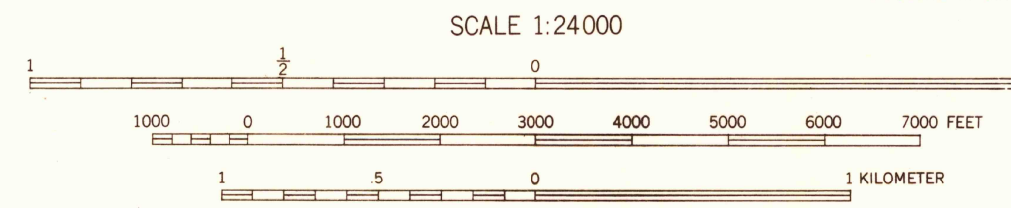
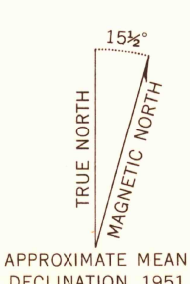
STATE OF CALIFORNIA
EARL WARREN, GOVERNOR
FRANK B. DURKEE, DIRECTOR OF PUBLIC WORKS
A. D. EDMONSTON, STATE ENGINEER

LOS ANGELES COUNTY
BOARD OF SUPERVISORS
ROGER W. JESSUP, CHAIRMAN
WILLIAM J. FOX, COUNTY SURVEYOR

TORRANCE QUADRANGLE
CALIFORNIA-LOS ANGELES CO.
7.5 MINUTE SERIES (TOPOGRAPHIC)



Maped, edited, and published by the Geological Survey
Control by USC&GS and Los Angeles Co.
Topography by plane-table surveys 1923
Culture and drainage revised by multiplex methods
from aerial photographs taken 1947
Contour revision and field check 1951
Hydrography compiled from USC&GS Chart 5148
Polyconic projection. 1927 North American datum
10,000-foot grid based on California coordinate system,
zones 5 and 7
Red tint indicates areas in which only landmark buildings are shown
Dashed land lines indicate approximate locations



CONTOUR INTERVAL 25 FEET
DOTTED LINES REPRESENT 5 FOOT CONTOURS
DATUM IS MEAN SEA LEVEL
SHORELINE SHOWN REPRESENTS THE APPROXIMATE LINE OF MEAN HIGH WATER
THE AVERAGE RANGE OF TIDE IS APPROXIMATELY 4 FEET

THIS MAP COMPLIES WITH NATIONAL MAP ACCURACY STANDARDS
FOR SALE BY U. S. GEOLOGICAL SURVEY, FEDERAL CENTER, DENVER, COLORADO OR WASHINGTON 25, D. C.
A FOLDER DESCRIBING TOPOGRAPHIC MAPS AND SYMBOLS IS AVAILABLE ON REQUEST

ROAD CLASSIFICATION
Heavy-duty 4 LANE 16 LANE Light-duty
Medium-duty 4 LANE 16 LANE Unimproved dirt
U. S. Route State Route

TORRANCE, CALIF.
N3345-W11815/7.5

1951

JUN 18 1953