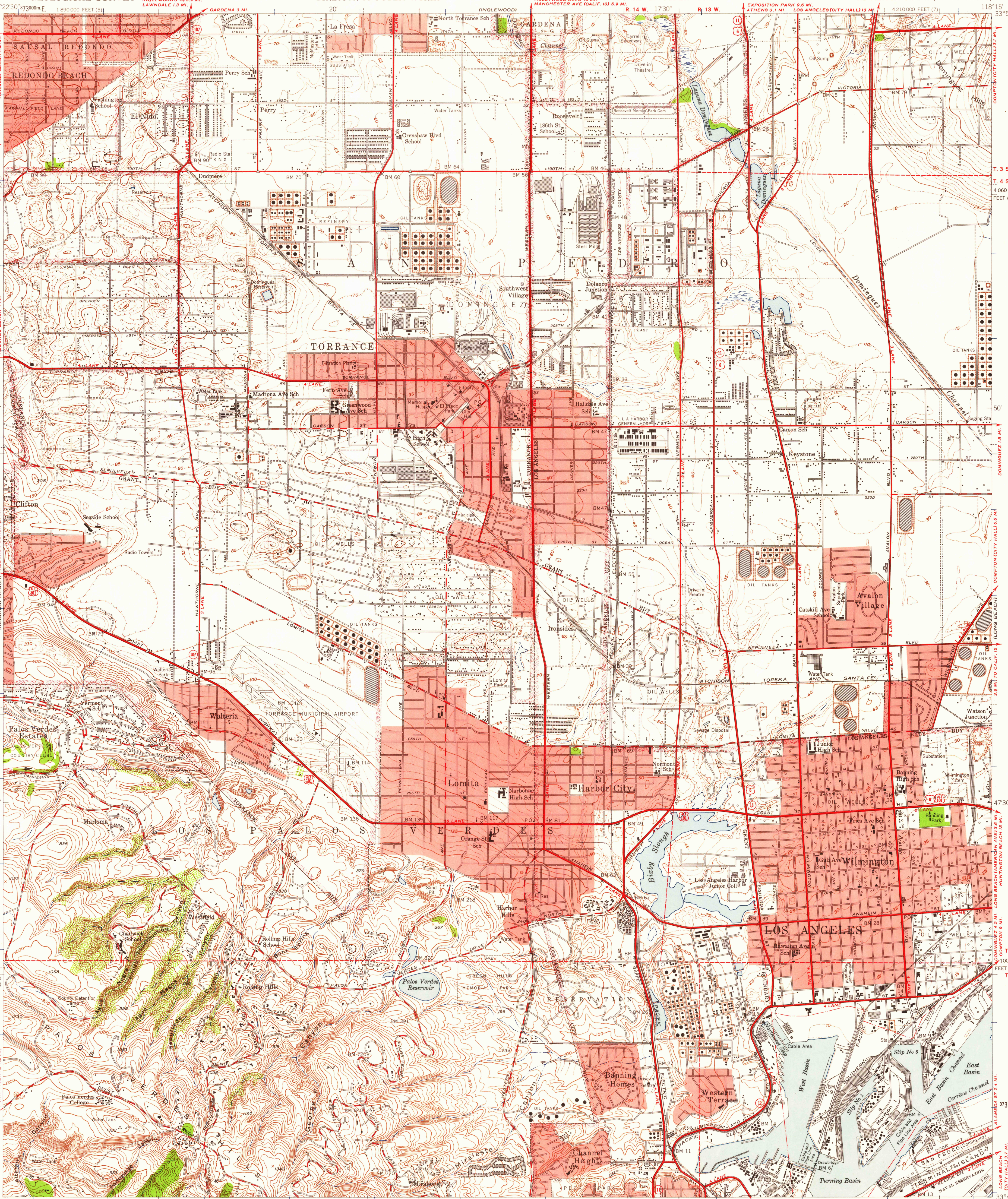


UNITED STATES
DEPARTMENT OF THE INTERIOR
GEOLOGICAL SURVEY

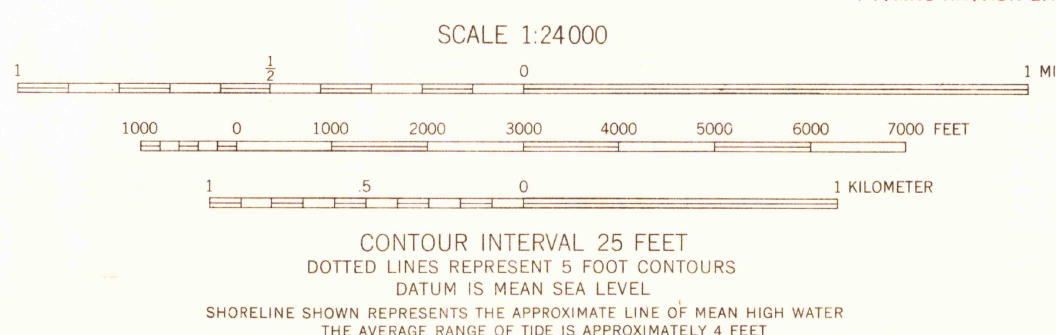
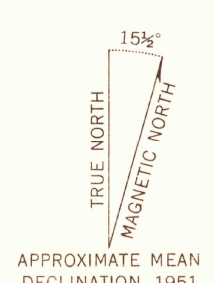
STATE OF CALIFORNIA
REPRESENTED BY THE
DIRECTOR OF PUBLIC WORKS

LOS ANGELES COUNTY
REPRESENTED BY THE
BOARD OF SUPERVISORS

TORRANCE QUADRANGLE
CALIFORNIA-LOS ANGELES CO.
7.5 MINUTE SERIES (TOPOGRAPHIC)



Maped, edited, and published by the Geological Survey
Control by US&GS and Los Angeles Co.
Topography by plane-table surveys 1923
Culture and drainage revised by multiplex methods
from aerial photographs taken 1947
Contour revision and field check 1951
Hydrography compiled from US&GS Chart 5148
Polyconic projection. 1927 North American datum
10,000-foot grid based on California coordinate system,
zones 5 and 7
Red tint indicates areas in which only landmark buildings are shown
Dashed land lines indicate approximate locations
1000-meter Universal Transverse Mercator grid ticks,
zone 11, shown in blue



CONTOUR INTERVAL 25 FEET
DOTTED LINES REPRESENT 5 FOOT CONTOURS
DATUM IS MEAN SEA LEVEL
SHORELINE SHOWN REPRESENTS THE APPROXIMATE LINE OF MEAN HIGH WATER
THE AVERAGE RANGE OF TIDE IS APPROXIMATELY 4 FEET
THIS MAP COMPLIES WITH NATIONAL MAP ACCURACY STANDARDS
FOR SALE BY U. S. GEOLOGICAL SURVEY, DENVER 2, COLORADO OR WASHINGTON 25, D. C.
A FOLDER DESCRIBING TOPOGRAPHIC MAPS AND SYMBOLS IS AVAILABLE ON REQUEST

USGS
Historical File
Topographic Division

ROAD CLASSIFICATION

Heavy-duty	4 LANE 16 LANE	Light-duty
Medium-duty	2 LANE 16 LANE	Unimproved dirt
U. S. Route		State Route

USGS
FILE COPY
TOPOGRAPHIC DIVISION

TORRANCE, CALIF.
N3345-W11815/7.5

1951

JAN -2 1959

7780