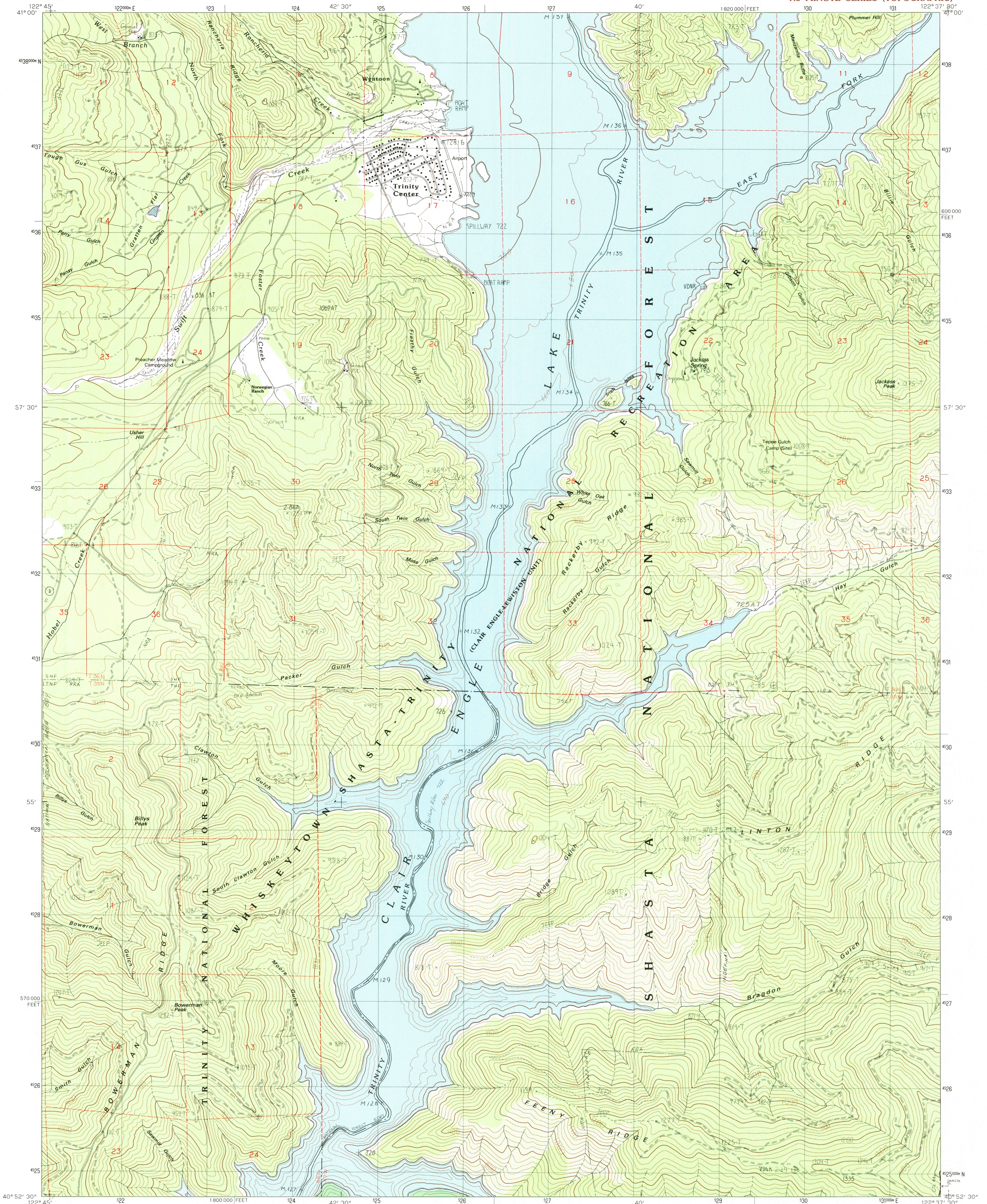


UNITED STATES
DEPARTMENT OF THE INTERIOR
GEOLOGICAL SURVEY

TRINITY CENTER QUADRANGLE
CALIFORNIA—TRINITY CO.
7.5 MINUTE SERIES (TOPOGRAPHIC)



PRODUCED BY THE UNITED STATES GEOLOGICAL SURVEY
CONTROL BY.....USGS, NOS/NOAA
COMPILED FROM AERIAL PHOTOGRAPHS TAKEN.....1978
FIELD CHECKED.....1976 MAP EDITED.....1982
PROJECTION.....UNIVERSAL TRANSVERSE MERCATOR
GRID: 1000-METER UNIVERSAL TRANSVERSE MERCATOR, ZONE 10
10,000-FOOT STATE GRID TICS.....CALIFORNIA, ZONE 1
UTM GRID DECLINATION.....9°12' EAST
1980 MAGNETIC NORTH DECLINATION.....17°30' EAST
VERTICAL DATUM: NATIONAL GEODETIC VERTICAL DATUM OF 1929
HORIZONTAL DATUM: 1927 NORTH AMERICAN DATUM
To place on the predicted North American Datum of 1983,
move the projection lines as shown by dashed corner ticks
(19 meters north/94 meters east)
There may be private inholdings within the boundaries of any
Federal and State Reservations shown on this map
Certain land lines are omitted because of insufficient data

PROVISIONAL MAP
Produced from original
manuscript drawings. Informa-
tion shown as of date of
field check.

SCALE 1:24 000
1 1000 5 0 5 KILOMETERS 1 2000
1 1000 5 0 5 METERS 1 2000
1 1000 5 0 5 MILES 1 2000
1 1000 5 0 5 FEET 1 2000
CONTOUR INTERVAL 20 METERS
CONTROL ELEVATIONS SHOWN TO THE NEAREST 0.1 METER
OTHER ELEVATIONS SHOWN TO THE NEAREST METER
To convert meters to feet multiply by 3.28084
To convert feet to meters multiply by 0.3048
CONTOURS AND ELEVATIONS IN METERS
THIS MAP COMPLIES WITH NATIONAL MAP ACCURACY STANDARDS
FOR SALE BY U.S. GEOLOGICAL SURVEY, DENVER, COLORADO 80225, OR RESTON, VIRGINIA 22092

1	2	3	1 Ycatapom Peak
2	4	5	2 Carville
3	6	7	3 Whiskey Bill Peak
4	8	8	4 Covington Mill
5			5 Dammon Peak
6			6 Trinity Dam
7			7 Papoose Creek
8			8 Schull Mtn.

ADJOINING 7.5 QUADRANGLE NAMES

ROAD LEGEND
Improved Road.....
Unimproved Road.....
Trail.....
Interstate Route.....
U.S. Route.....
State Route.....
QUADRANGLE LOCATION
CALIF.
TRINITY CENTER, CALIF.
PROVISIONAL EDITION 1982
40122-H6-TM-024

USGS MND HISTORICAL MAP
JUL 02 1986
REC'D FILE COPY