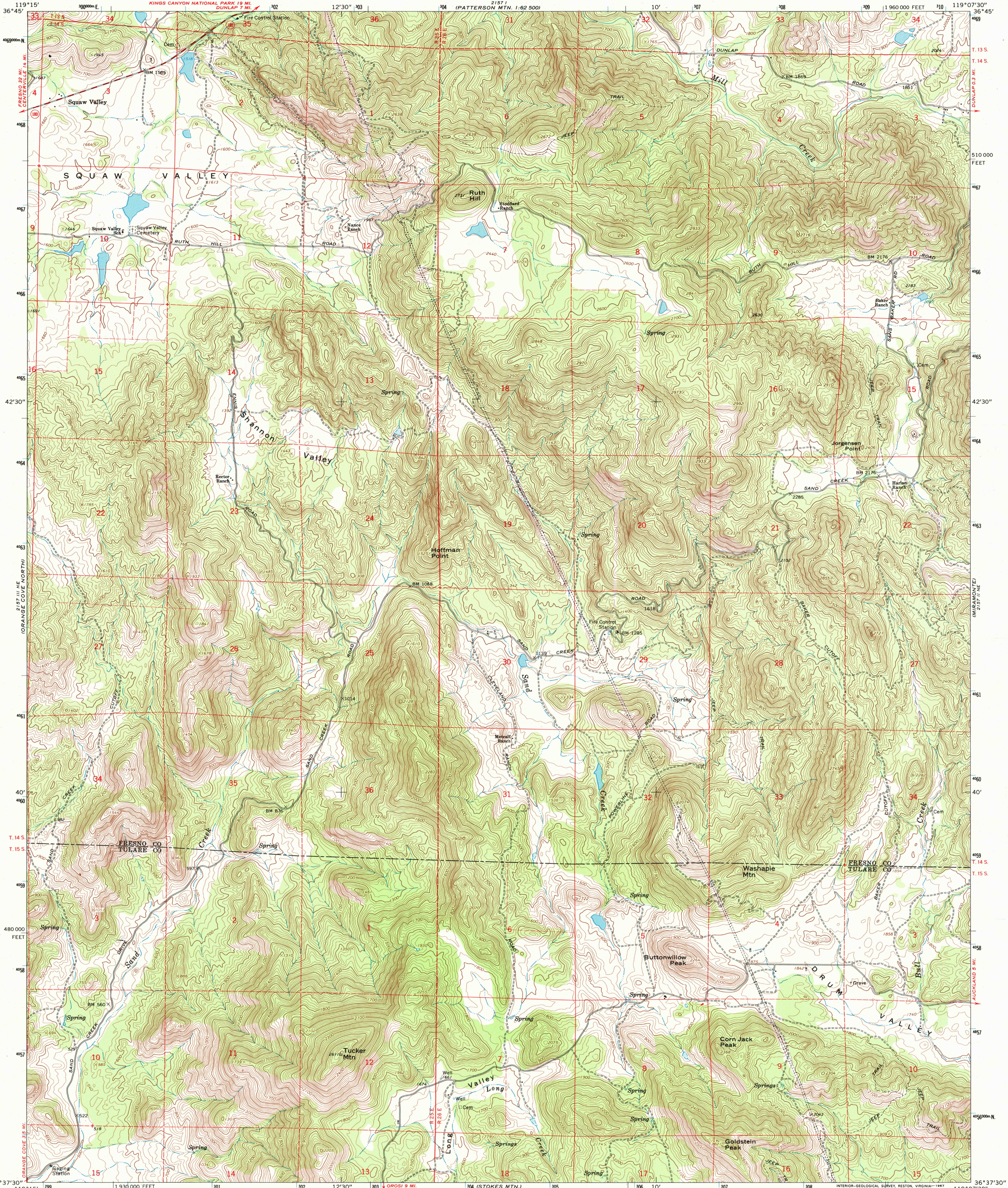




U.S. DEPARTMENT OF THE INTERIOR  
U.S. GEOLOGICAL SURVEY

STATE OF CALIFORNIA  
DEPARTMENT OF WATER RESOURCES

TUCKER MTN. QUADRANGLE  
CALIFORNIA  
7.5 MINUTE SERIES (TOPOGRAPHIC)  
NW/4 DUNLAP 15' QUADRANGLE



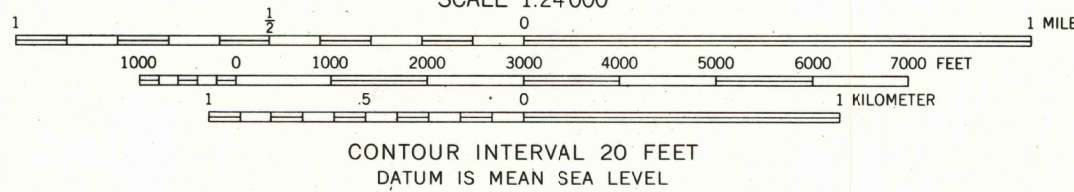
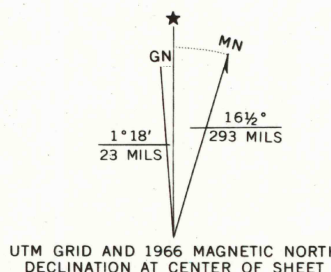
Mapped, edited, and published by the Geological Survey

Control by USGS and USC&GS

Topography by photogrammetric methods from aerial photographs taken 1963. Field checked 1966

Polyconic projection. 1927 North American datum  
10,000-foot grid based on California coordinate system, zone 4  
1000-meter Universal Transverse Mercator grid ticks, zone 11, shown in blue

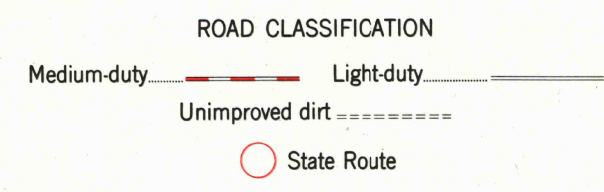
Fine red dashed lines indicate selected fence lines



CONTOUR INTERVAL 20 FEET  
DATUM IS MEAN SEA LEVEL



QUADRANGLE LOCATION



TUCKER MTN., CALIF.  
NW/4 DUNLAP 15' QUADRANGLE  
N3637.5-W11907.5/7.5

1966

AMS 2157 II NW-SERIES V895

THIS MAP COMPLIES WITH NATIONAL MAP ACCURACY STANDARDS  
FOR SALE BY U.S. GEOLOGICAL SURVEY, P.O. BOX 25286, DENVER, COLORADO 80225  
A FOLDER DESCRIBING TOPOGRAPHIC MAPS AND SYMBOLS IS AVAILABLE ON REQUEST

