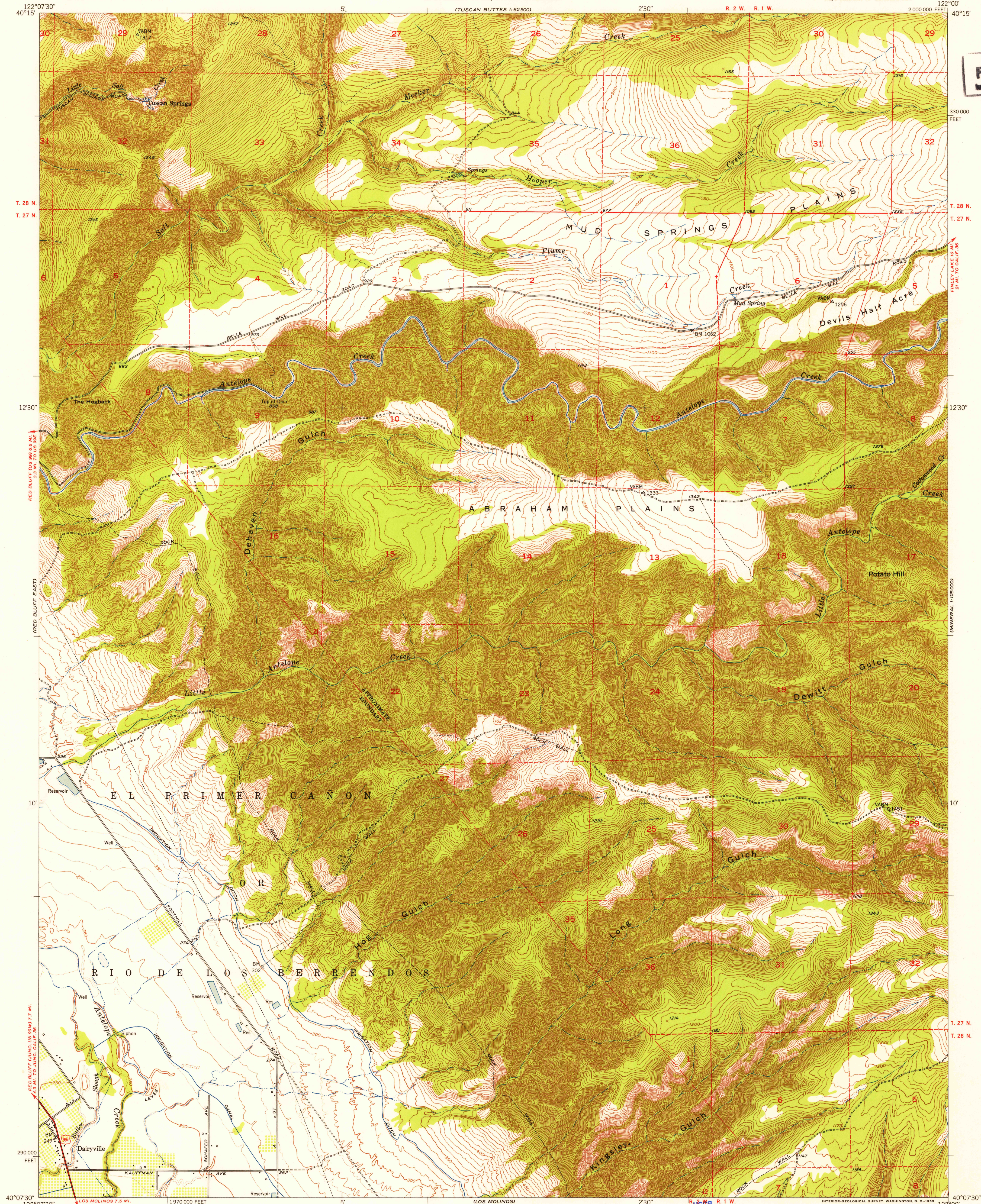
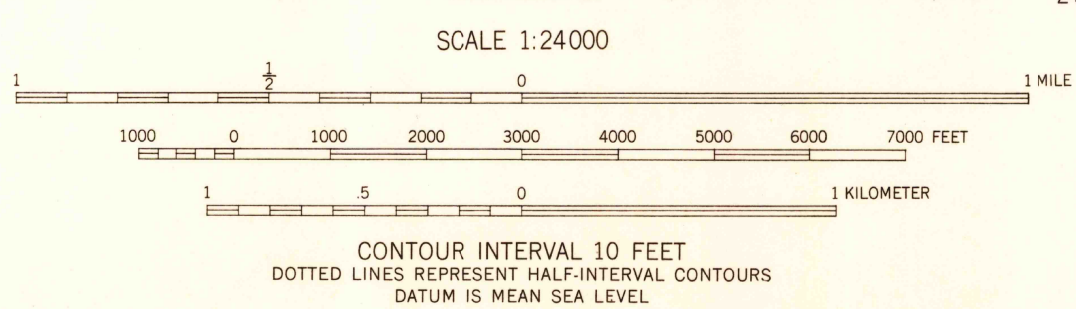
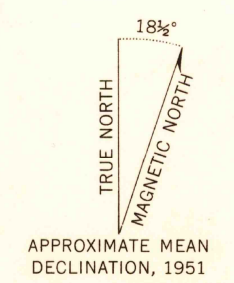


U.S.G.S.
FILE COPY
Inquiries and Orders



Mapped, edited, and published by the Geological Survey
Control by USGS and USC&GS
Topography from aerial photographs by Kelsch plotter and by
plane-table surveys 1951. Aerial photographs taken 1947
Polyconic projection. 1927 North American datum
10,000-foot grid based on California coordinate system, zone 1
Dashed land lines indicate approximate locations
Unchecked elevations are shown in brown



CONTOUR INTERVAL 10 FEET
DOTTED LINES REPRESENT HALF-INTERVAL CONTOURS
DATUM IS MEAN SEA LEVEL

U.S.G.S.
Historical File
Topographic Division

ROAD CLASSIFICATION

Heavy-duty	4 LANE 6 LANE	Light-duty
Medium-duty	4 LANE 6 LANE	Unimproved dirt

U. S. Route State Route



TUSCAN SPRINGS, CALIF.
NE/4 TEHAMA 15' QUADRANGLE
N4007.5-W12200/7.5
1951

U.S.G.S.
FILE COPY
Inquiries and Orders

OCT 26 1953