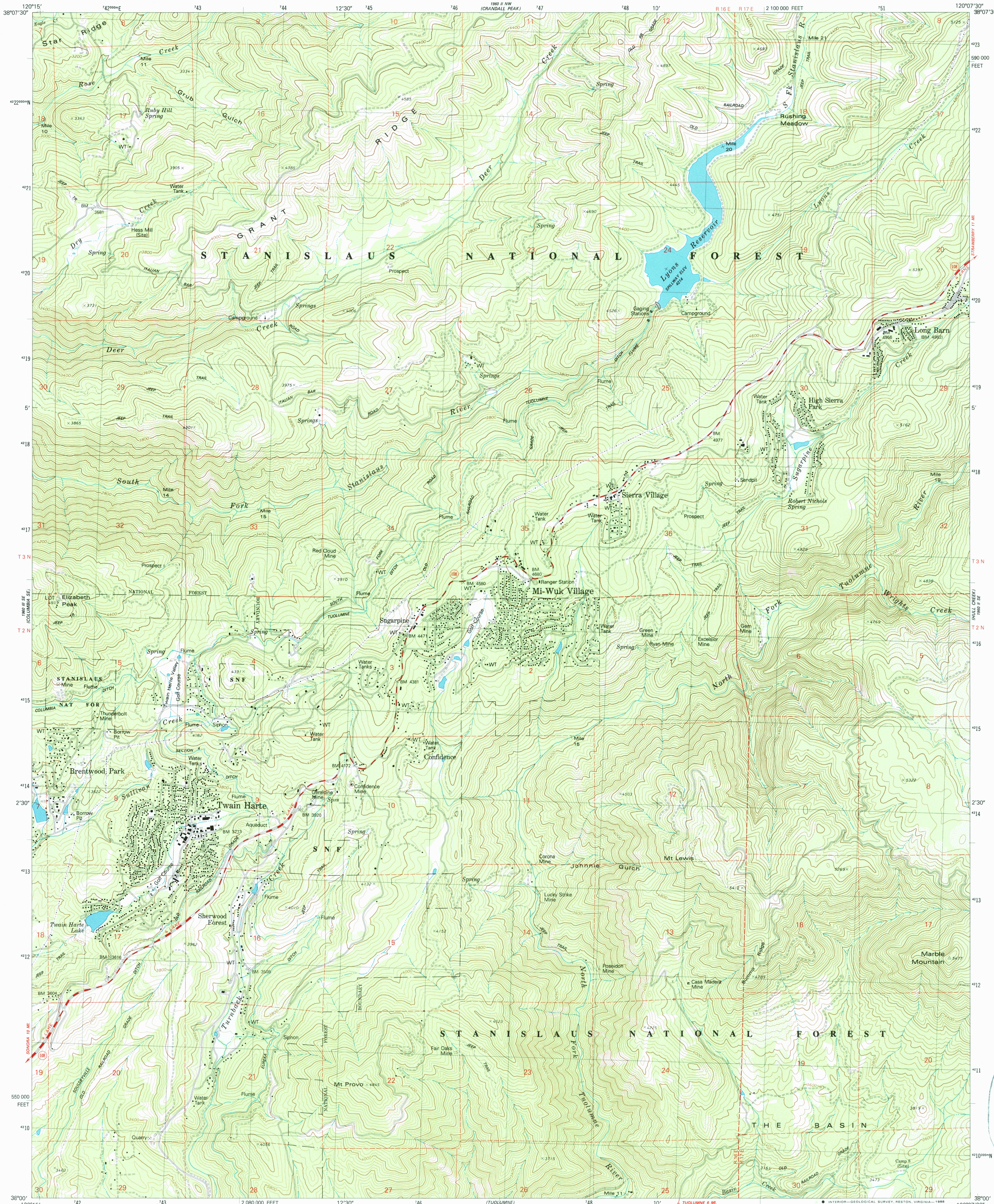


1980 II NW  
(STANISLAUS)

UNITED STATES  
DEPARTMENT OF THE INTERIOR  
GEOLOGICAL SURVEY

TWAIN HARTE QUADRANGLE  
CALIFORNIA-TUOLUMNE CO.  
7.5 MINUTE SERIES (TOPOGRAPHIC)  
SW/4 LONG BARN 15' QUADRANGLE

1980 I NE  
(STANISLAUS)



1980 II SE  
(COLUMBIA)

Mapped, edited, and published by the Geological Survey

Control by USGS and NOS/NOAA

Topography by photogrammetric methods from aerial

photographs taken 1973. Field checked 1974

Map edited 1979

Projection and 10,000-foot grid ticks: California coordinate

system, zone 3 (Lambert conformal conic)

1000-meter Universal Transverse Mercator grid, zone 10

1927 North American Datum

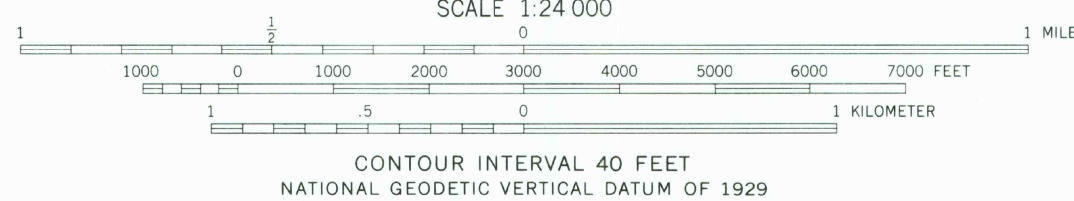
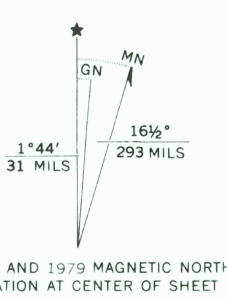
To place on the predicted North American Datum 1983

move the projection lines 12 meters north and

89 meters east as shown by dashed corner ticks

There may be private inholdings within the boundaries of

the National or State reservations shown on this map



ROAD CLASSIFICATION	
Primary highway, hard surface	Light-duty road, hard or improved surface
Secondary highway, hard surface	Unimproved road
Interstate Route	U. S. Route
	State Route

TWAIN HARTE, CALIF.  
SW/4 LONG BARN 15' QUADRANGLE  
38120-AS-TF-024

1979

DMA 1960 II SW—SERIES V895

THIS MAP COMPLIES WITH NATIONAL MAP ACCURACY STANDARDS  
FOR SALE BY U. S. GEOLOGICAL SURVEY, DENVER, COLORADO 80225, OR RESTON, VIRGINIA 22092  
A FOLDER DESCRIBING TOPOGRAPHIC MAPS AND SYMBOLS IS AVAILABLE ON REQUEST

U.S. GEOLOGICAL SURVEY  
APR 19 1988  
REC'D FILE COPY