

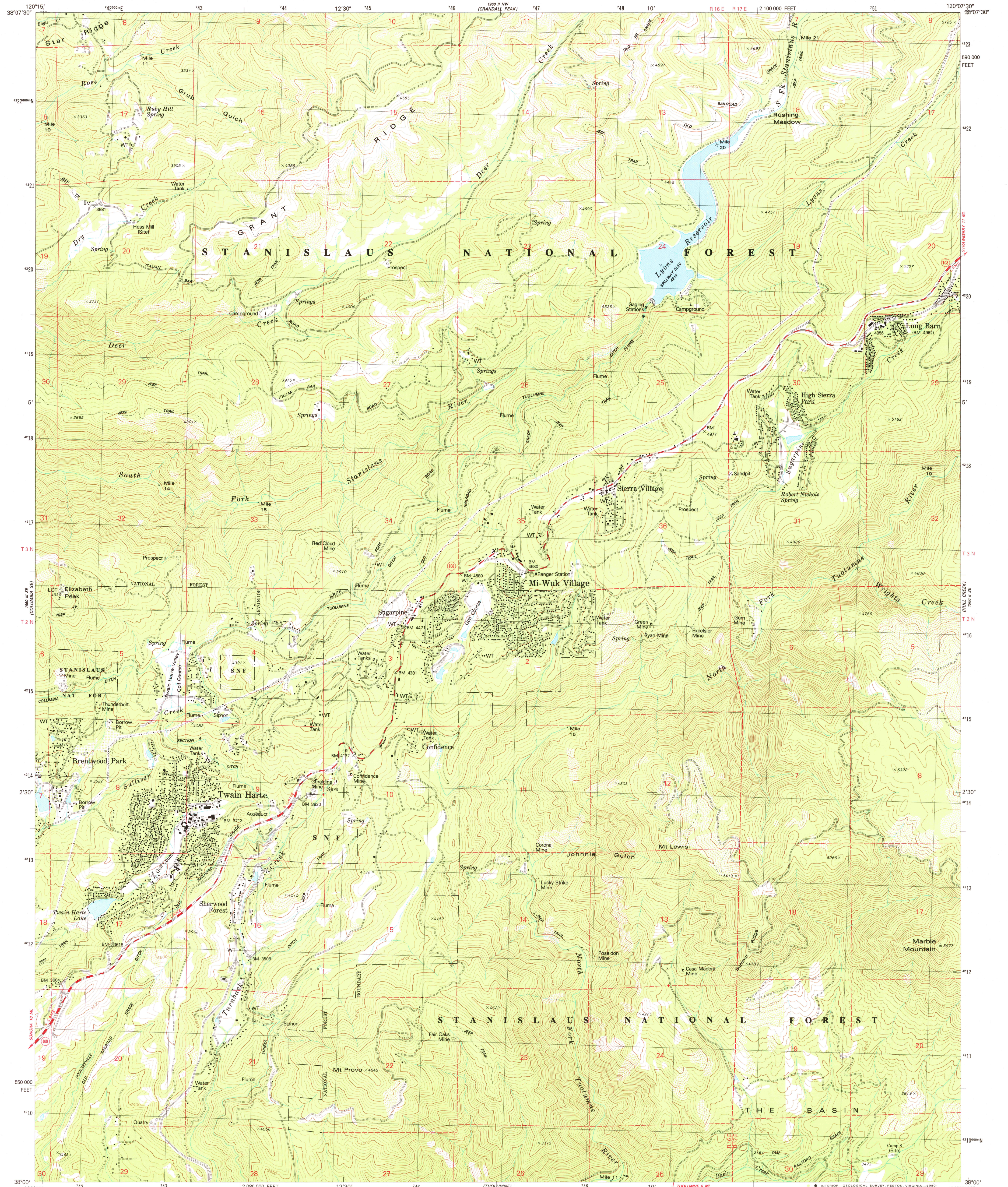
500000 FEET
1:250,000

UNITED STATES
DEPARTMENT OF THE INTERIOR
GEOLOGICAL SURVEY

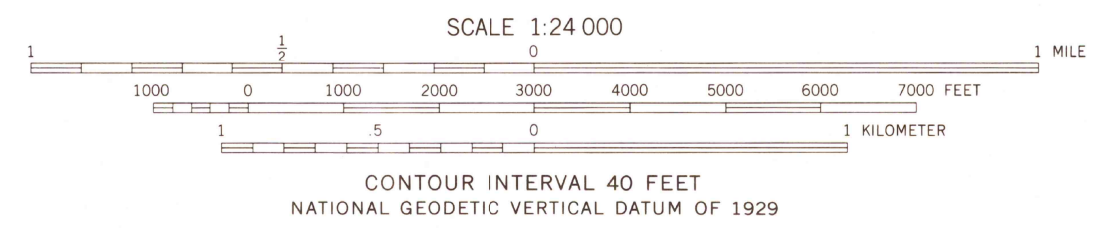
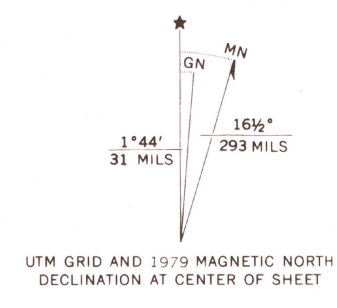


TWAIN HARTE QUADRANGLE
CALIFORNIA-TUOLUMNE CO.
7.5 MINUTE SERIES (TOPOGRAPHIC)
SW 1/4 LONG BARN 15' QUADRANGLE

1980 II NW
1575 WADSWORTH



Mapped, edited, and published by the Geological Survey
Control by USGS and NOS/NOAA
Topography by photogrammetric methods from aerial
photographs taken 1973. Field checked 1974
Map edited 1979
Projection and 10,000-foot grid ticks: California coordinate
system, zone 3 (Lambert conformal conic)
1000-meter Universal Transverse Mercator grid, zone 10
1927 North American Datum
To place on the predicted North American Datum 1983
move the projection lines 12 meters north and
69 meters east as shown by dashed corner ticks
There may be private inholdings within the boundaries of
the National or State reservations shown on this map



ROAD CLASSIFICATION
Primary highway, hard surface
Secondary highway, hard surface
Light duty road, hard or improved surface
Unimproved road
Interstate Route
U.S. Route
State Route

TWAIN HARTE, CALIF.
SW 1/4 LONG BARN 15' QUADRANGLE
N3800-W12007.5/7.5
1979
DMA 1960 II SW-SERIES Y895

MAR 27 1980
2800

THIS MAP COMPLIES WITH NATIONAL MAP ACCURACY STANDARDS
FOR SALE BY U.S. GEOLOGICAL SURVEY, DENVER, COLORADO 80225, OR RESTON, VIRGINIA 22092
A FOLDER DESCRIBING TOPOGRAPHIC MAPS AND SYMBOLS IS AVAILABLE ON REQUEST