

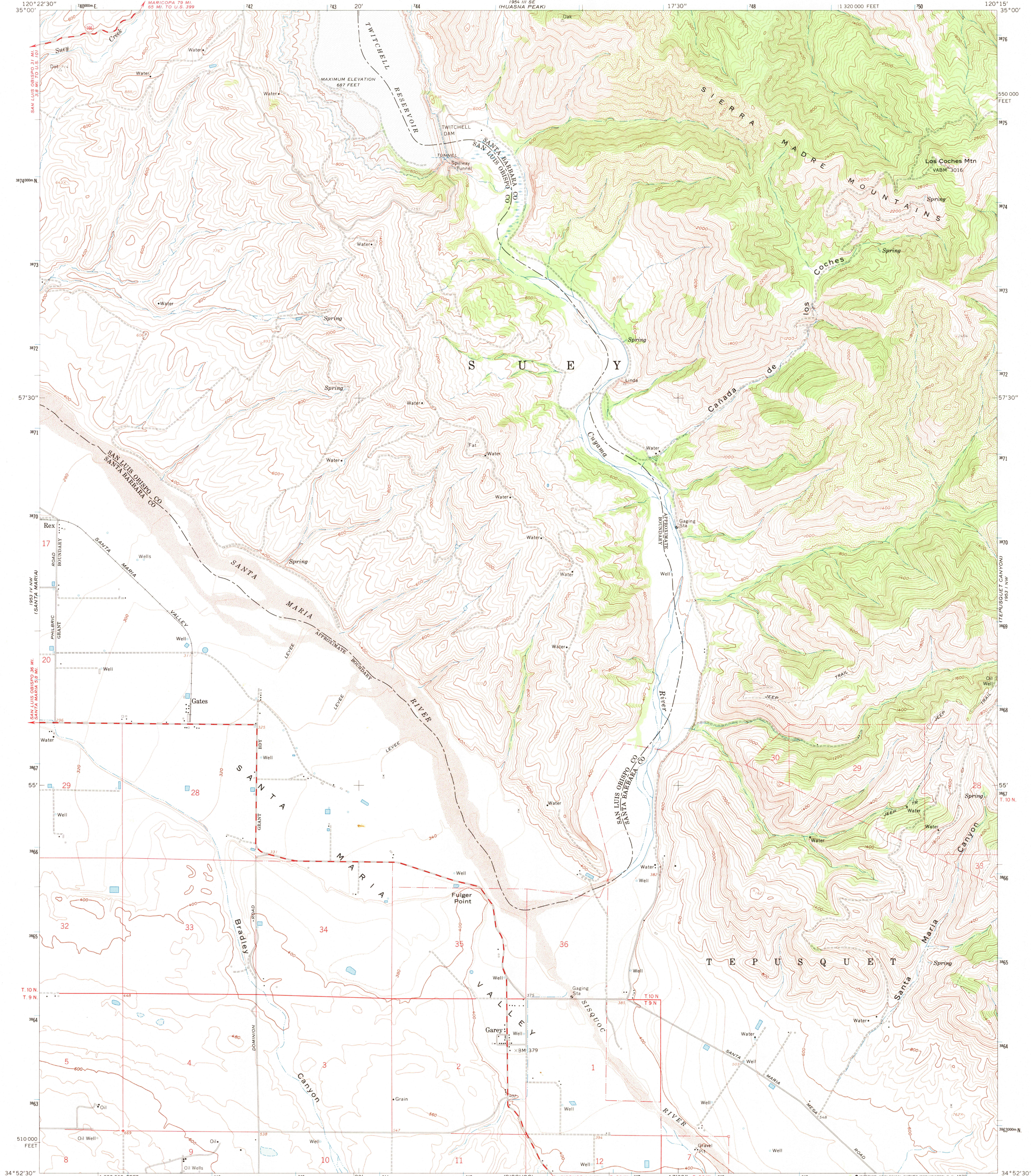
1984 U.S. GEOLOGICAL SURVEY

UNITED STATES
DEPARTMENT OF THE INTERIOR
GEOLOGICAL SURVEY

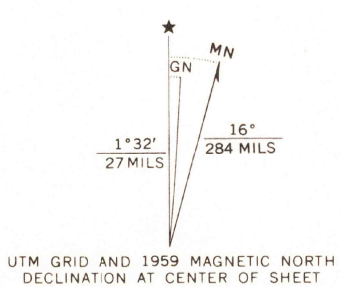
STATE OF CALIFORNIA
EDMUND G. BROWN, GOVERNOR
HARVEY O. BANKS, DIRECTOR OF WATER RESOURCES

TWITCHELL DAM QUADRANGLE
CALIFORNIA
7.5 MINUTE SERIES (TOPOGRAPHIC)
NE/4 SANTA MARIA 15' QUADRANGLE

1984 U.S. GEOLOGICAL SURVEY



Mapped, edited, and published by the Geological Survey
Control by USGS, USCE, and U. S. Bureau of Reclamation
Topography from aerial photographs by photogrammetric methods
and by planetable surveys 1959. Aerial photographs taken 1956
Polyconic projection. 1927 North American datum
10,000-foot grid based on California coordinate system, zone 5
1000-meter Universal Transverse Mercator grid ticks,
zone 10, shown in blue
Blue hatching indicates area subject to controlled inundation
at maximum elevation of 687 feet
Dashed land lines indicate approximate locations
Unchecked elevations are shown in brown



SCALE 1:24,000
CONTOUR INTERVAL 40 FEET
DOTTED LINES REPRESENT 10-FOOT CONTOURS
DATUM IS MEAN SEA LEVEL
THIS MAP COMPLIES WITH NATIONAL MAP ACCURACY STANDARDS
FOR SALE BY U. S. GEOLOGICAL SURVEY, DENVER, COLORADO 80225, OR WASHINGTON, D. C. 20242
A FOLDER DESCRIBING TOPOGRAPHIC MAPS AND SYMBOLS IS AVAILABLE ON REQUEST

USGS
Historical File
Topographic Division

U.S.G.S.
FILE COPY
TOPOGRAPHIC DIVISION

ROAD CLASSIFICATION
Medium-duty ——— Light-duty ———
Unimproved dirt ———
State Route ———

TWITCHELL DAM, CALIF.
NE/4 SANTA MARIA 15' QUADRANGLE
N3452.5—W12015.7.5
1959
AMS 1953 IV NE—SERIES V895

MAY 25 1970