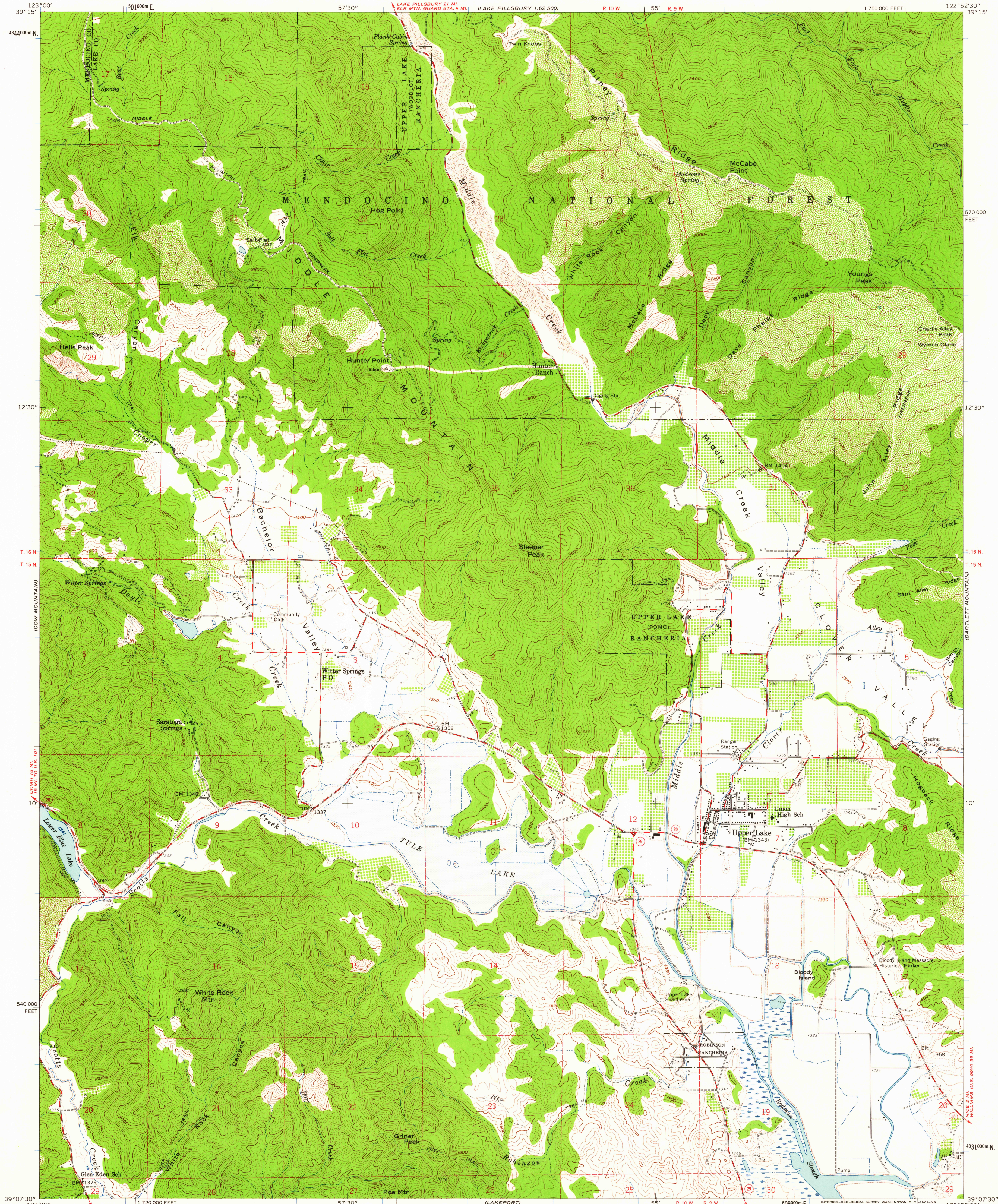


LAKE PILLSBURY
1:62,500



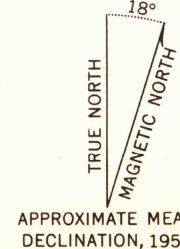
Mapped, edited, and published by the Geological Survey
Control by USGS, USC&GS, and USCE

Topography from aerial photographs by photogrammetric methods
and by planetable surveys 1958. Aerial photographs taken 1957

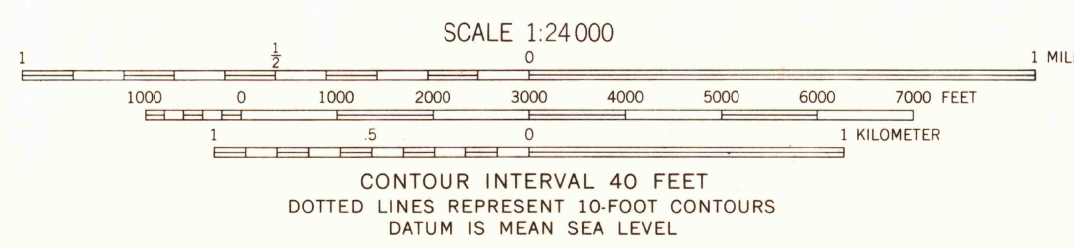
Polyconic projection. 1927 North American datum
10,000-foot grid based on California coordinate system, zone 2
1000-meter Universal Transverse Mercator grid ticks,
zone 10, shown in blue

Dashed land lines indicate approximate locations
Landlines omitted in part of T. 16 N. - R. 9 W.
because of insufficient data

Areas covered by dashed light-blue pattern
subject to occasional inundation



APPROXIMATE MEAN
DECLINATION, 1958



SCALE 1:24,000
CONTOUR INTERVAL 40 FEET
DOTTED LINES REPRESENT 10-FOOT CONTOURS
DATUM IS MEAN SEA LEVEL

THIS MAP COMPLIES WITH NATIONAL MAP ACCURACY STANDARDS
FOR SALE BY U. S. GEOLOGICAL SURVEY, DENVER 25, COLORADO OR WASHINGTON 25, D. C.
A FOLDER DESCRIBING TOPOGRAPHIC MAPS AND SYMBOLS IS AVAILABLE ON REQUEST

USGS
Historical File
Topographic Division

ROAD CLASSIFICATION
Medium-duty ——— Light-duty ———
Unimproved dirt - - - - - State Route



QUADRANGLE LOCATION

U.S.G.S.
FILE COPY
TOPOGRAPHIC DIVISION

UPPER LAKE, CALIF.
NW/4 LAKEPORT 15 QUADRANGLE
N3907.5-W12252.5/7.5

1958

JUN 21 1961

3105