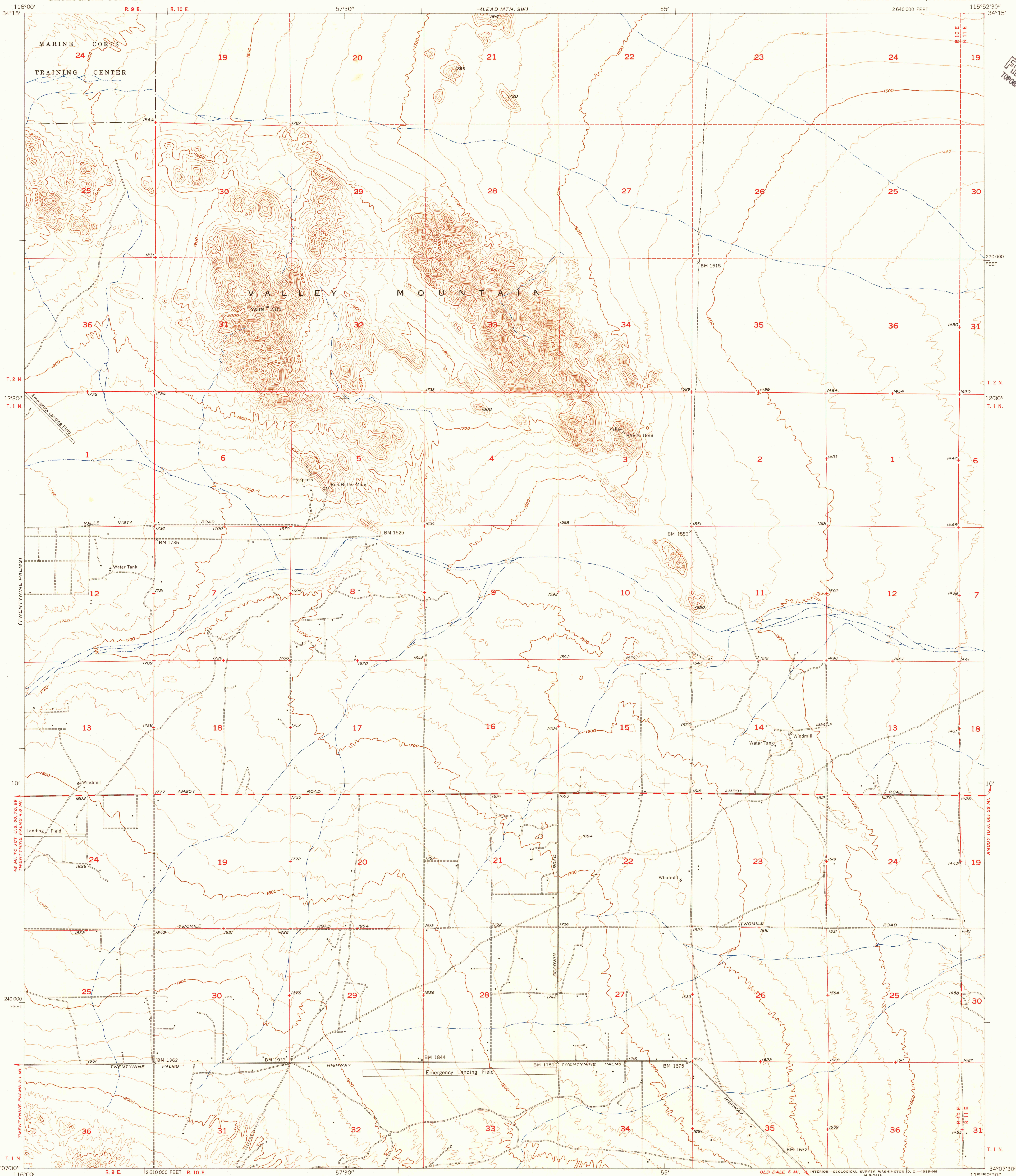
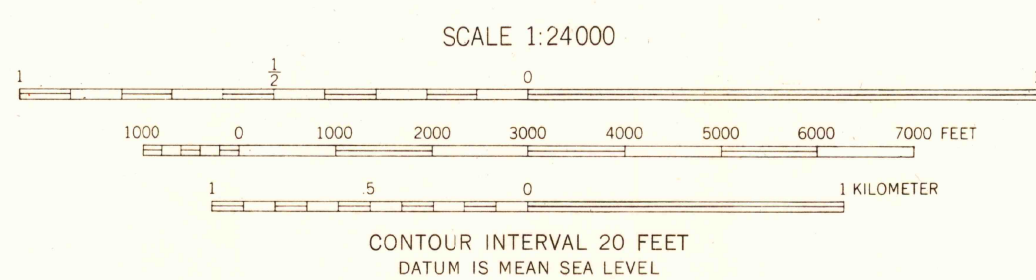


U.S.G.S.
FILE COPY
TOPOGRAPHIC DIVISION



Mapped, edited, and published by the Geological Survey
Control by USGS and USC&GS
Topography from aerial photographs by photogrammetric methods
and by plane-table surveys 1954. Aerial photographs taken 1952.
Polyconic projection. 1927 North American datum
10,000-foot grid based on California coordinate system, zone 5
Dashed land lines indicate approximate locations
Unchecked elevations are shown in brown

TRUE NORTH
MAGNETIC NORTH
APPROXIMATE MEAN
DECLINATION, 1954



USGS
Historical File
Topographic Division

ROAD CLASSIFICATION
Heavy-duty ——— Light-duty ———
Medium-duty ——— Unimproved dirt ———
U. S. Route —○— State Route —○—



U.S.G.S.
FILE COPY
TOPOGRAPHIC DIVISION

VALLEY MTN., CALIF.
N 3407.5—W 11552.5/7.5

1954

NOV 2 1955

3178