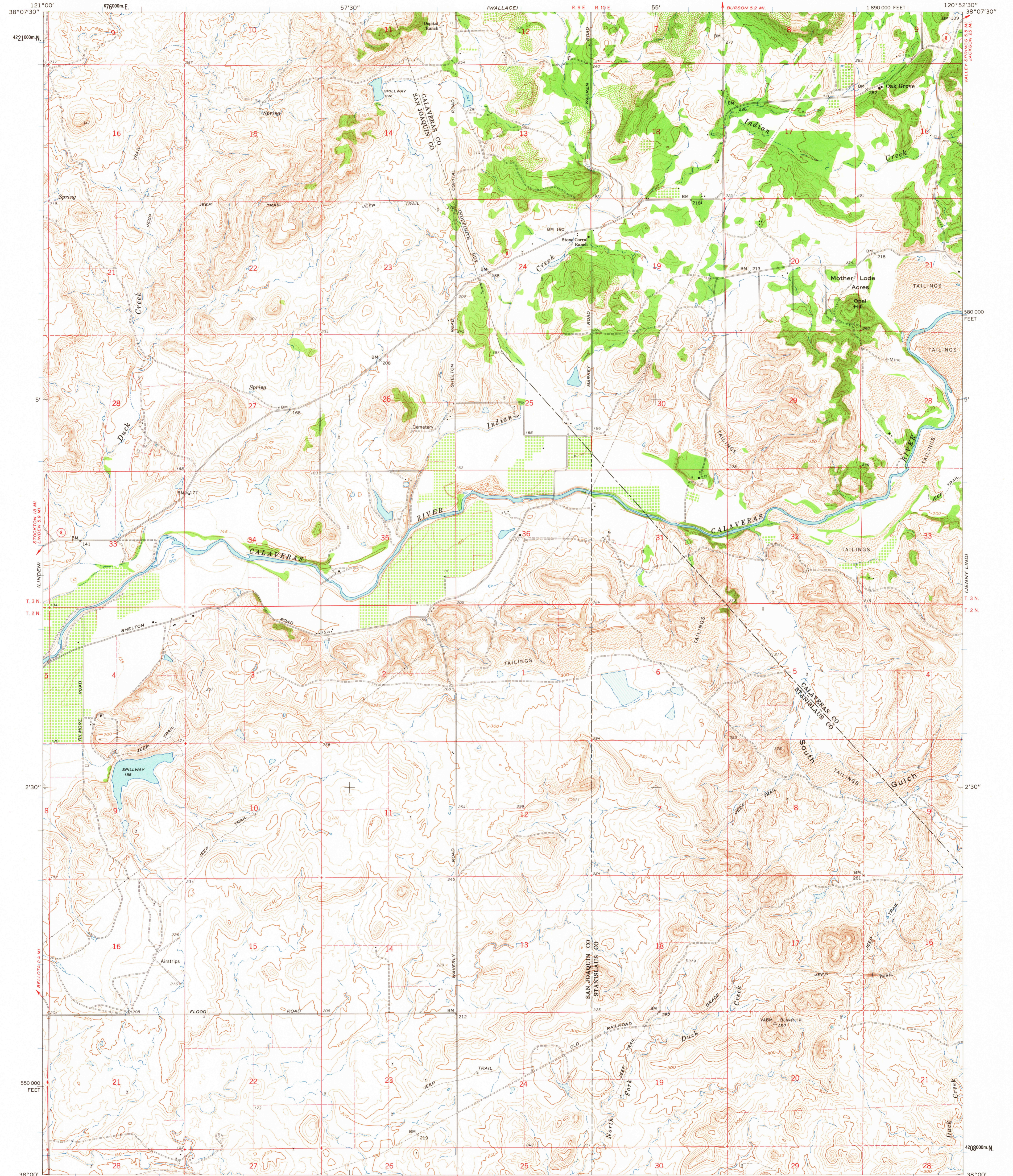


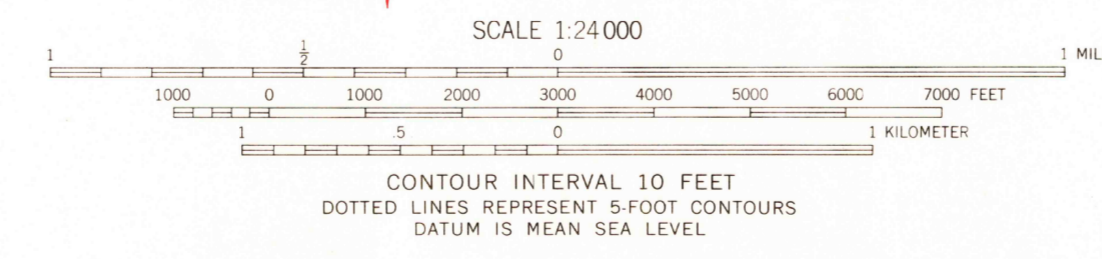
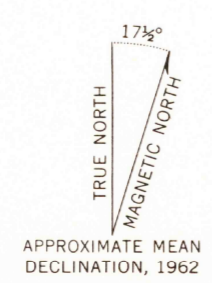
CLEMENTS

VALLEY SPRINGS SW QUADRANGLE  
CALIFORNIA  
7.5 MINUTE SERIES (TOPOGRAPHIC)  
SW/4 VALLEY SPRINGS 15' QUADRANGLE

VALLEY SPRINGS



Mapped, edited, and published by the Geological Survey in cooperation with California Department of Water Resources Control by USGS and USC&GS  
Topography by photogrammetric methods from aerial photographs taken 1959 and planetable surveys 1962  
Polyconic projection. 1927 North American datum 10,000-foot grid based on California coordinate system, zone 3 1000-meter Universal Transverse Mercator grid ticks, zone 10, shown in blue  
Fine red dashed lines indicate selected fence lines



USGS  
Historical File  
Topographic Division

ROAD CLASSIFICATION  
Light-duty ————— Unimproved dirt - - - - -  
State Route (circle with number)



VALLEY SPRINGS SW, CALIF.  
SW/4 VALLEY SPRINGS 15' QUADRANGLE  
N3800—W12052.5/7.5

THIS MAP COMPLIES WITH NATIONAL MAP ACCURACY STANDARDS  
FOR SALE BY U. S. GEOLOGICAL SURVEY, DENVER 25, COLORADO OR WASHINGTON 25, D. C.  
A FOLDER DESCRIBING TOPOGRAPHIC MAPS AND SYMBOLS IS AVAILABLE ON REQUEST

1962

3760

AUG 20 1963