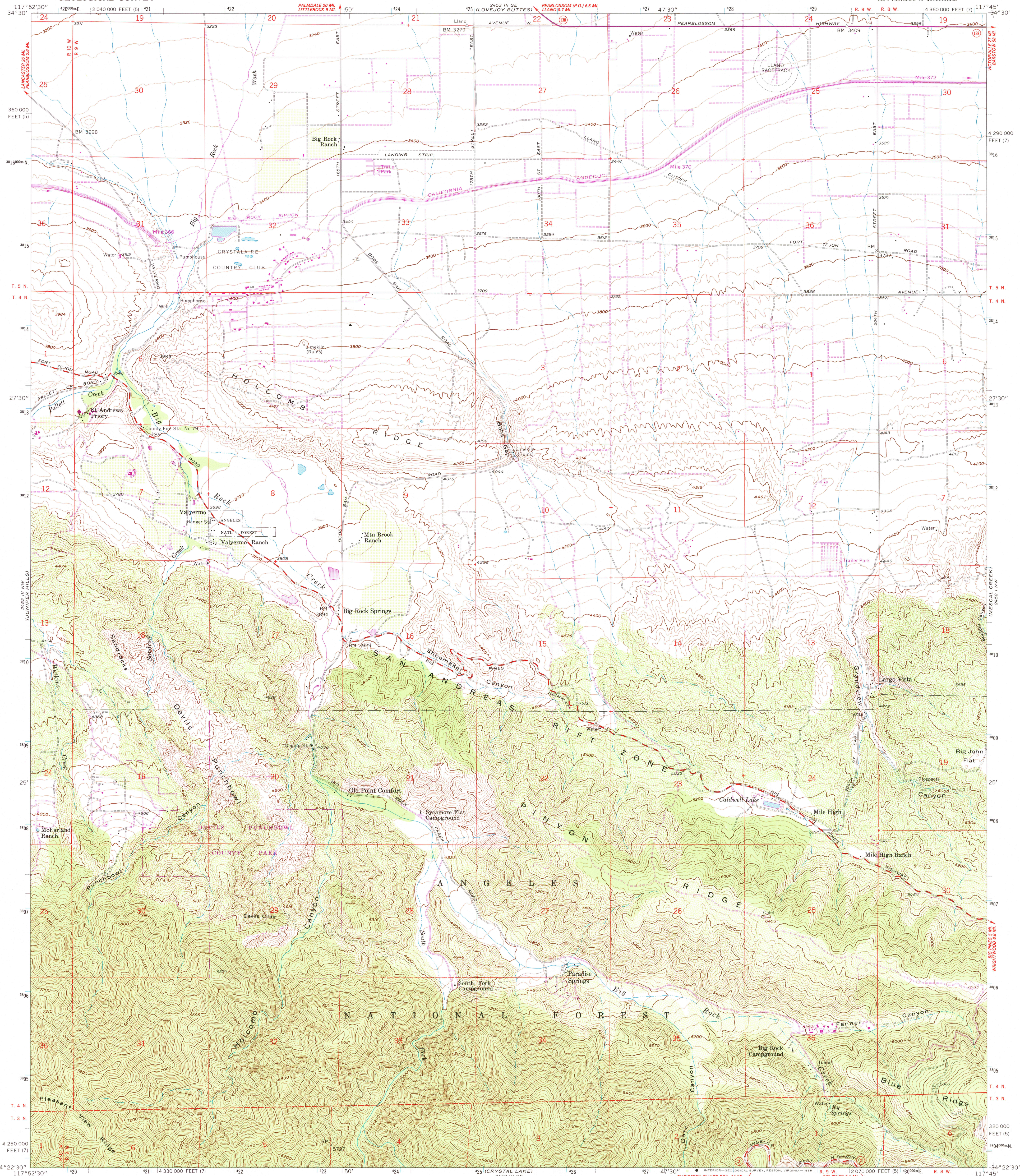


UNITED STATES
DEPARTMENT OF THE INTERIOR
GEOLOGICAL SURVEY

VALYERMO QUADRANGLE
CALIFORNIA—LOS ANGELES CO.
7.5 MINUTE SERIES (TOPOGRAPHIC)
NE/4 VALYERMO 15' QUADRANGLE



Mapped, edited, and published by the Geological Survey

Control by USGS and NOS/NOAA

Topography from aerial photographs by photogrammetric methods

Aerial photographs taken 1957. Field check 1958

Polyconic projection. 1927 North American Datum

10,000-foot grids based on California coordinate system,

zones 7 and 5

1000-meter Universal Transverse Mercator grid ticks,

zone 11, shown in blue

Dashed land lines indicate approximate locations

Land lines unsurveyed in part of T. 4 N.—R. 8 W.

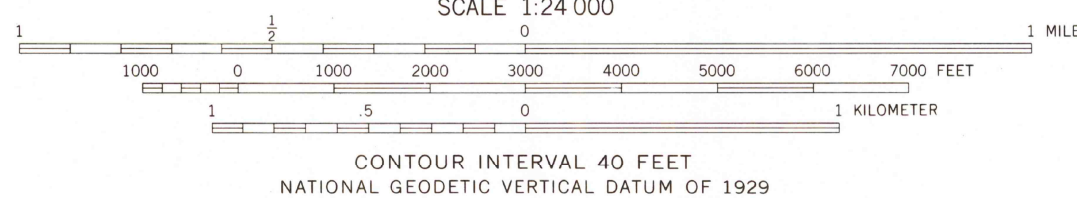
Unchecked elevations are shown in brown

To place on the predicted North American Datum 1983

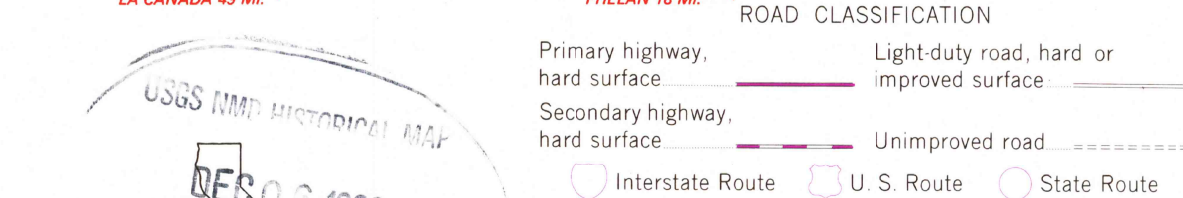
move the projection lines 3 meters north and

84 meters east as shown by dashed corner ticks

There may be private inholdings within the boundaries
of the National or State reservations shown on this map

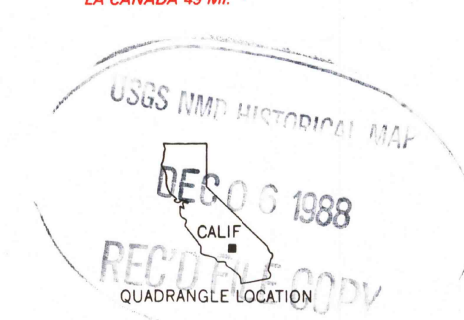


THIS MAP COMPLIES WITH NATIONAL MAP ACCURACY STANDARDS
FOR SALE BY U. S. GEOLOGICAL SURVEY, DENVER, COLORADO 80225, OR RESTON, VIRGINIA 22092
A FOLDER DESCRIBING TOPOGRAPHIC MAPS AND SYMBOLS IS AVAILABLE ON REQUEST



VALYERMO, CALIF.
NE/4 VALYERMO 15' QUADRANGLE
34117-D7-TF-024

1958
PHOTOREVISED 1988
DMA 2452 IV NE—SERIES V895



Revisions shown in purple and woodland
compiled from aerial photographs taken 1984
and other source data. Partial field check
by U.S. Forest Service. Map edited 1988