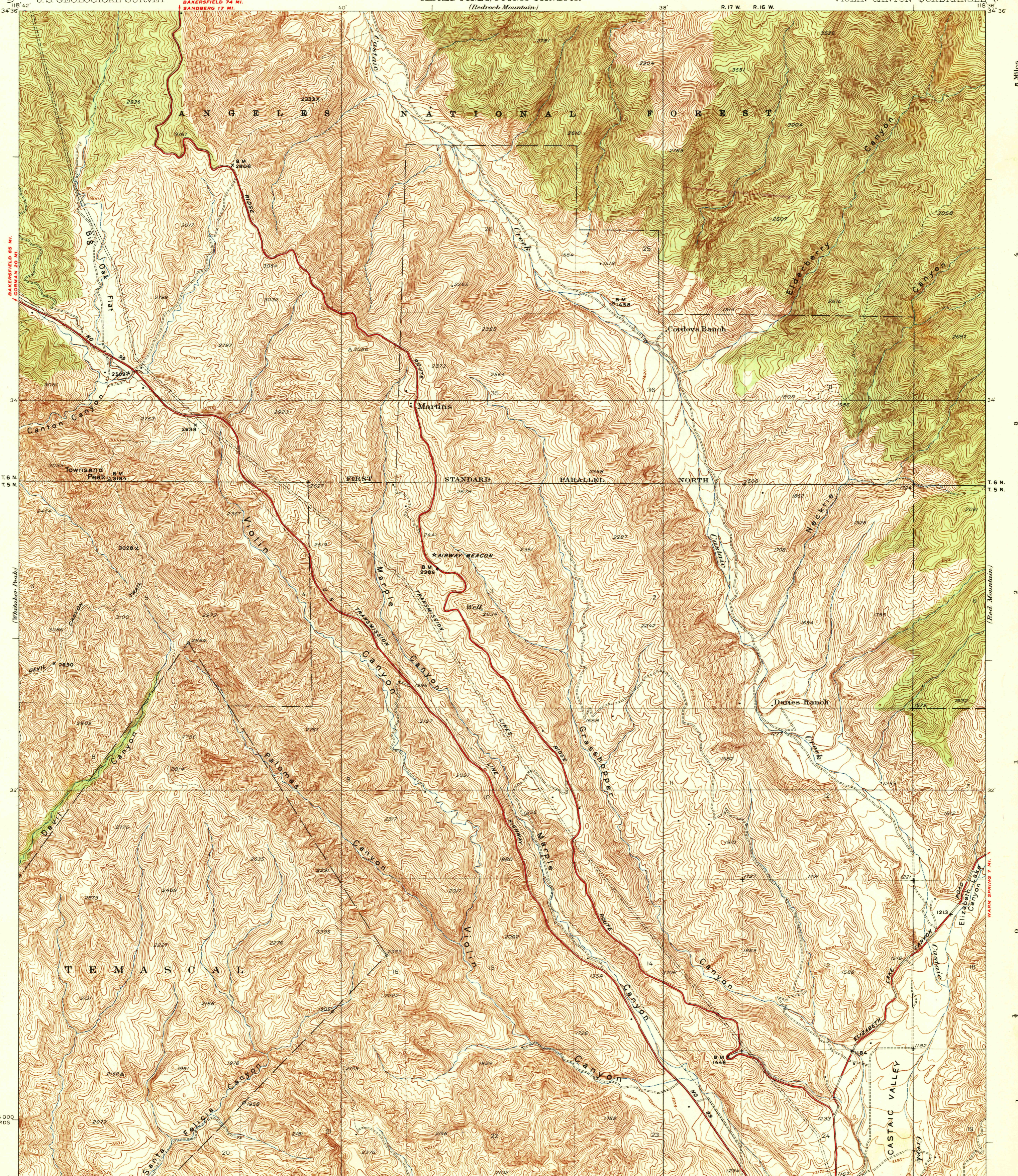


U. S. G. S. FILE COPY Inspection and Editing.

DEPARTMENT OF THE INTERIOR  
U. S. GEOLOGICAL SURVEY

LOS ANGELES COUNTY, CALIFORNIA  
BOARD OF SUPERVISORS  
ROGER W. JESSUP, CHAIRMAN  
ALFRED JONES, COUNTY SURVEYOR  
(Redrock Mountain)

CALIFORNIA  
(LOS ANGELES COUNTY)  
VIOLIN CANYON QUADRANGLE



118° 42' 34.36" W  
34° 36' 34" N  
BAKERSFIELD 86 MI.  
COWMAN 25 MI.  
WHEELER PEAKS  
SANTA ROSA CANYON

118° 36' 34.36" W  
34° 36' 34" N  
WARM SPRING 7 MI.  
SANTA ROSA CANYON

BAKERSFIELD 74 MI.  
SANDBERG 17 MI.

R. 17 W. R. 16 W.

T. 6 N. T. 5 N.

1275 000 YARDS

118° 42' 34.36" W  
34° 36' 34" N  
CASTAIC 1 MI. LOS ANGELES CITY HALL 42 MI.  
CASTAIC 1/2 MI. SAUGUS 8 1/2 MI.

Topography by F. K. Van Zandt  
Control by U. S. Geological Survey and  
U. S. Coast and Geodetic Survey  
Surveyed in 1931

USGS  
Historical File  
Topographic Division

Scale 24000  
Contour intervals 5 and 25 feet (see diagram)  
Datum is mean sea level

1 Mile  
5000 Feet  
Polyconic projection, North American datum  
5000 yard grid based upon U.S. zone system, G  
Land lines pertaining to part of T. 6 N.  
R. 17 W. are omitted because land plats  
and topography cannot be reconciled  
and no corners could be found.

VIOLIN CANYON, CALIF.  
Edition of 1937  
1652 : 2260 : 173

MAY 23 1997 (805) 1895