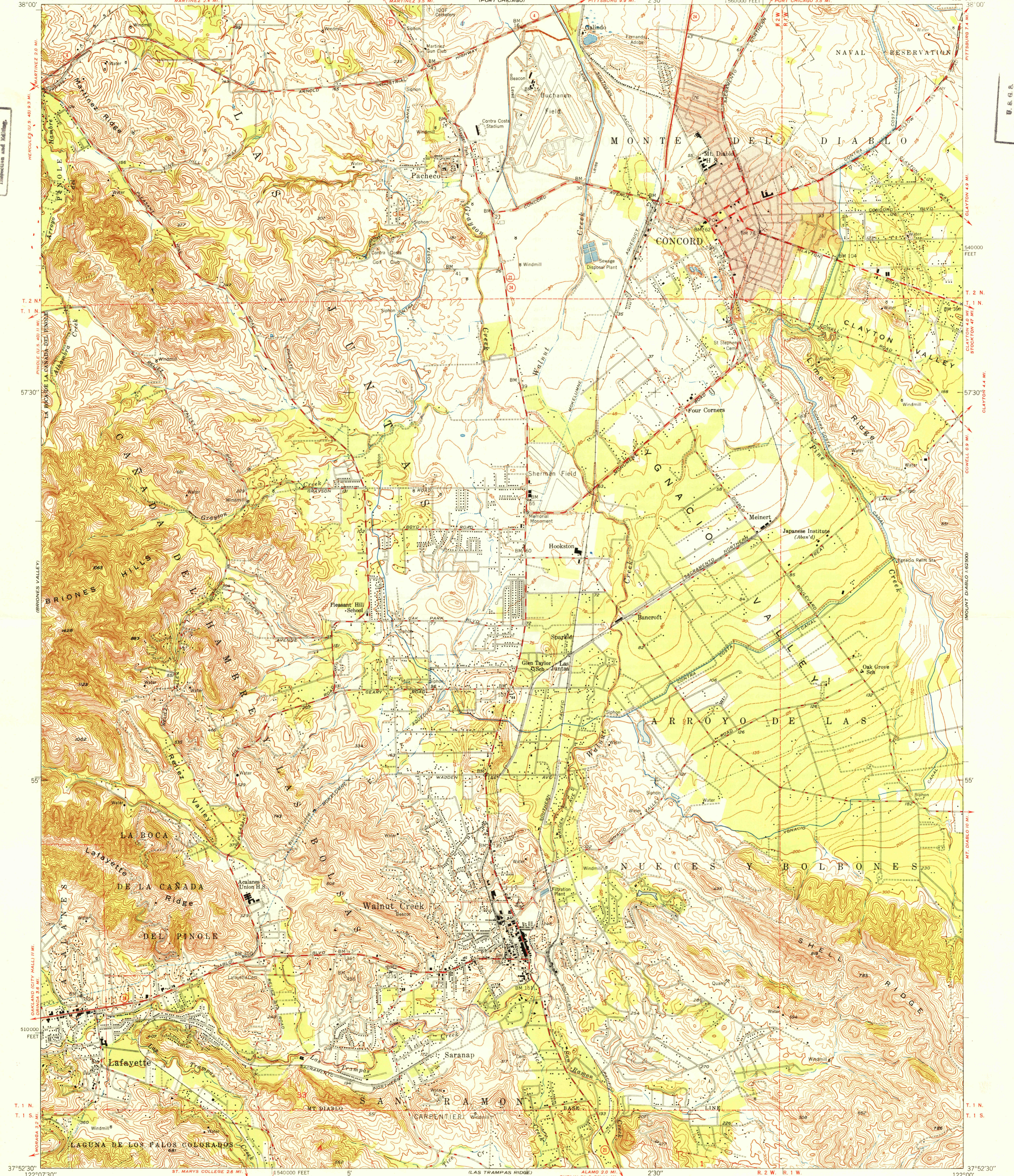
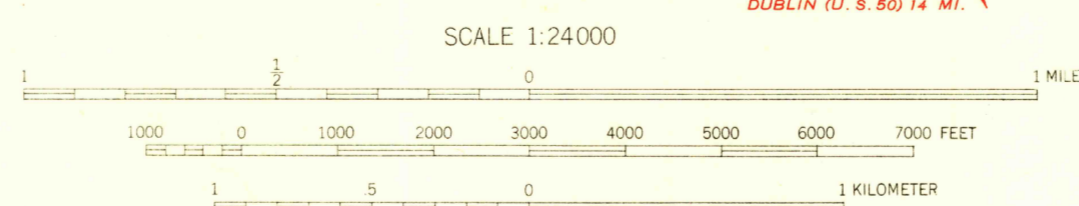


U.S.G.S.
FILE COPY
Inspection and Editing

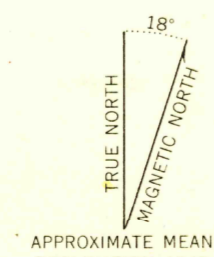
U.S.G.S.
FILE COPY
Inspection and Editing



Mapped, edited, and published by the Geological Survey
Control by USGS and USC & GS
Topography from aerial photographs by multiplex methods
Aerial photographs taken 1946 Field check 1947
Polyconic projection. 1927 North American datum
10,000-foot grid based on California coordinate system,
zone 3
Red tint indicates area in which only
landmark buildings are shown
Dashed land lines indicate approximate location



CONTOUR INTERVAL 25 FEET
DASHED LINES REPRESENT 5 FOOT CONTOURS
DATUM IS MEAN SEA LEVEL



USGS
Historical File
Topographic Division

ROAD CLASSIFICATION
HARD SURFACE ALL WEATHER ROADS DRY WEATHER ROADS
Heavy-duty 4 LANE IMPROVED DIRT
Medium-duty 2 LANE UNIMPROVED DIRT
Loose-surface, graded, or narrow hard-surface
U.S. Route State Route

U.S.G.S.
FILE COPY
Inspection and Editing

WALNUT CREEK, CALIF.
NE 1/4 CONCORD 15 QUADRANGLE
N3752.5-W12200/7.5
EDITION OF 1949