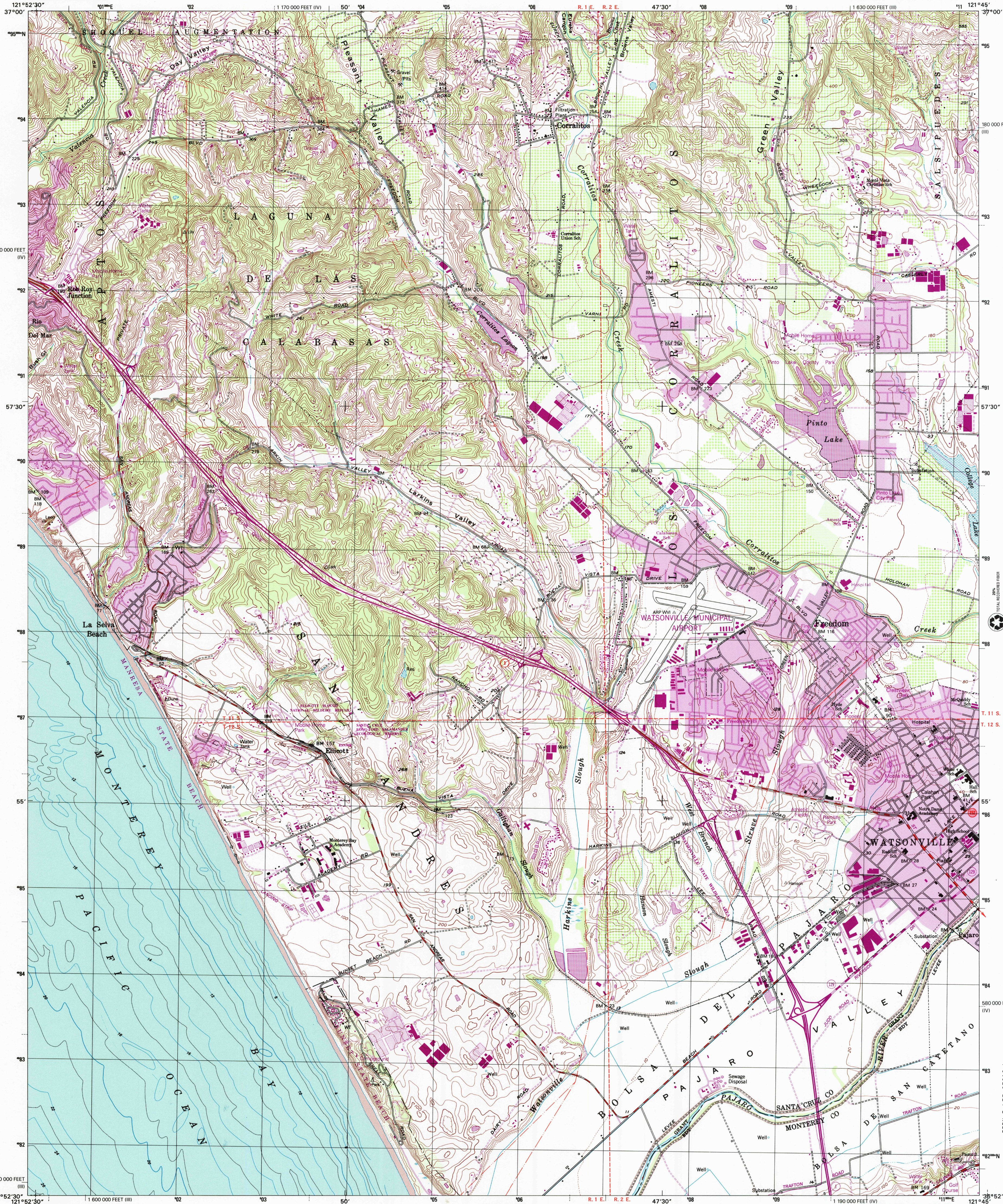




U.S. DEPARTMENT OF THE INTERIOR
U.S. GEOLOGICAL SURVEY

WATSONVILLE WEST QUADRANGLE
CALIFORNIA
7.5-MINUTE SERIES (TOPOGRAPHIC)



Produced by the United States Geological Survey

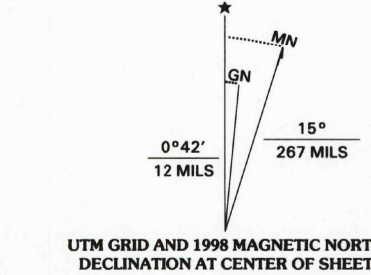
Topography compiled 1954. Planimetry derived from imagery dated 1987 and other sources. Photomaps using imagery dated 1995; no major culture or drainage changes observed. PLSS and survey control current as of 1994. Boundaries, other than corporate, verified 1998. Revisions shown in purple and woodland compiled from imagery dated 1987 and other sources and have been field checked.

North American Datum of 1927 (NAD 27). Projection and 1000-meter grid: Universal Transverse Mercator, zone 10 10 000-foot ticks: California Coordinate System of 1927, (zones 3 and 4)

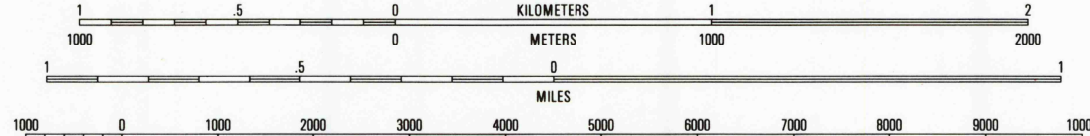
North American Datum of 1983 (NAD 83) is shown by dashed corner ticks. The values of the shift between NAD 27 and NAD 83 for 7.5-minute intersections are obtainable from National Geodetic Survey NADCON software.

Bathymetry compiled by the National Ocean Service from tide-coordinated hydrographic surveys, Numbers H-5393 and H-5405, dated 1933 and 1934. This information is not intended for navigational purposes.

Mean lower low water (dotted) line and mean high water (heavy-solid) line compiled by NOS from tide-coordinated aerial photographs. Apparent shoreline (outer edge of vegetation) shown by light solid line.



There may be private inholdings within the boundaries of the National or State reservations shown on this map. Where omitted, land lines have not been established.



CONTOUR INTERVAL 20 FEET
SUPPLEMENTARY CONTOUR INTERVAL 10 FEET
NATIONAL GEODETIC VERTICAL DATUM OF 1929
BATHYMETRIC CONTOUR INTERVAL 2 METERS WITH SUPPLEMENTARY 1 METER CONTOURS. DATUM IS MEAN LOWER LOW WATER.
THE RELATIONSHIP BETWEEN THE TWO DATUMS IS VARIABLE.
THE MEAN RANGE OF TIDE IS APPROXIMATELY 1.2 METERS.
TO CONVERT FROM FEET TO METERS, MULTIPLY BY 0.3048.
TO CONVERT FROM METERS TO FEET, MULTIPLY BY 3.2808.

BATHYMETRIC SURVEY DATA COMPILES WITH INTERNATIONAL HYDROGRAPHIC ORGANIZATION (IHO) SPECIAL PUBLICATION 44 ACCURACY STANDARDS AND/OR STANDARDS USED AS OF THE DATE OF THE STANDARDS FOR SALE BY U.S. GEOLOGICAL SURVEY, P.O. BOX 25286, DENVER, COLORADO 80225.
A FOLDER DESCRIBING TOPOGRAPHIC MAPS AND SYMBOLS IS AVAILABLE ON REQUEST.



QUADRANGLE LOCATION

1	2	3	1 Laurel
4	5	6	2 Loma Prieta
7	8	9	3 Mount Madonna
			4 Soquel
			5 Watsonville East
			6 Moss Landing
			7 Prunedale

ADJOINING 7.5' QUADRANGLE NAMES

ROAD CLASSIFICATION
Primary highway hard surface
Secondary highway hard surface
Interstate Route
U.S. Route
State Route
Light-duty road, hard or improved surface
Unimproved road

WATSONVILLE WEST, CA
1995

NIMA 1657 IV NE-SERIES V895



ISBN 0-607-84618-5
9 780607 846185

