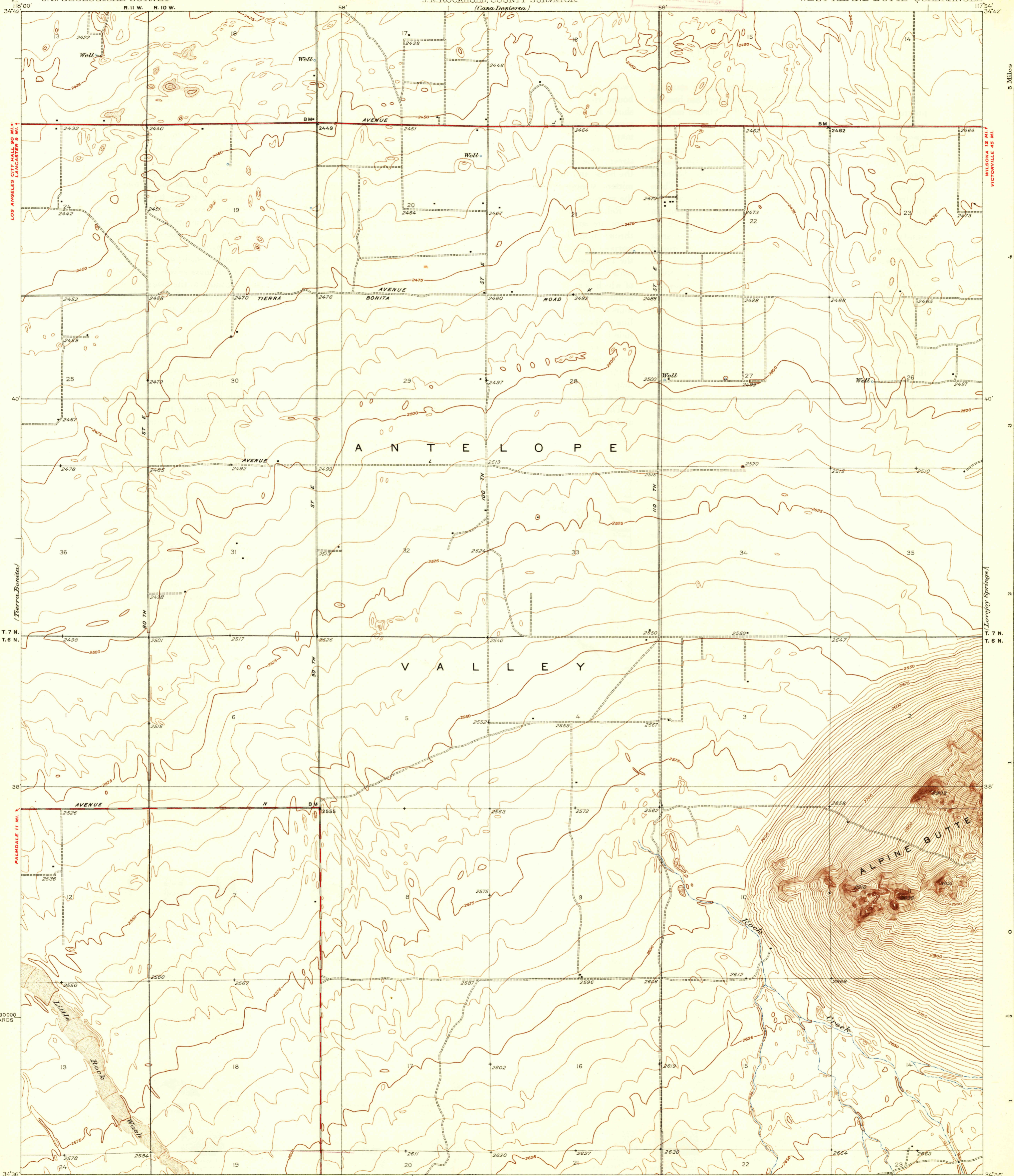


FILE COPY
Inspection and Editing



LOS ANGELES CITY 90 MI.
LANCASTER 9 MI.

WILSONA 12 MI.
VICTORVILLE 45 MI.

(Tierra Bonita)

(Lucy Springs)

1290000
YARDS

34°36'

117°54'

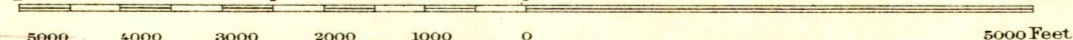
Topography by J. L. Lewis
Control by U.S. Geological Survey
Surveyed in 1930

TRUE NORTH
MAGNETIC NORTH
APPROXIMATE MEAN
DECLINATION, 1930

VICTORVILLE 45 MI.
SAN BERNARDINO 75 MI.

1305000 YARDS

Scale 1:20000



Contour interval 5 feet
Datum is mean sea level

1 Mile

USGS
Historical File
Topographic Division

Polyconic projection. North American datum
5000 yard grid based upon U.S. zone system, G

HARD IMPERVIOUSLY SURFACED ROADS
OTHER MAIN TRAVELED ROADS
INFORMATION FURNISHED BY LOS ANGELES COUNTY, 1932

WEST ALPINE BUTTE, CALIF.
Edition of 1933
1652:4208; 4312

JUN 22 1933 (1895)

1895