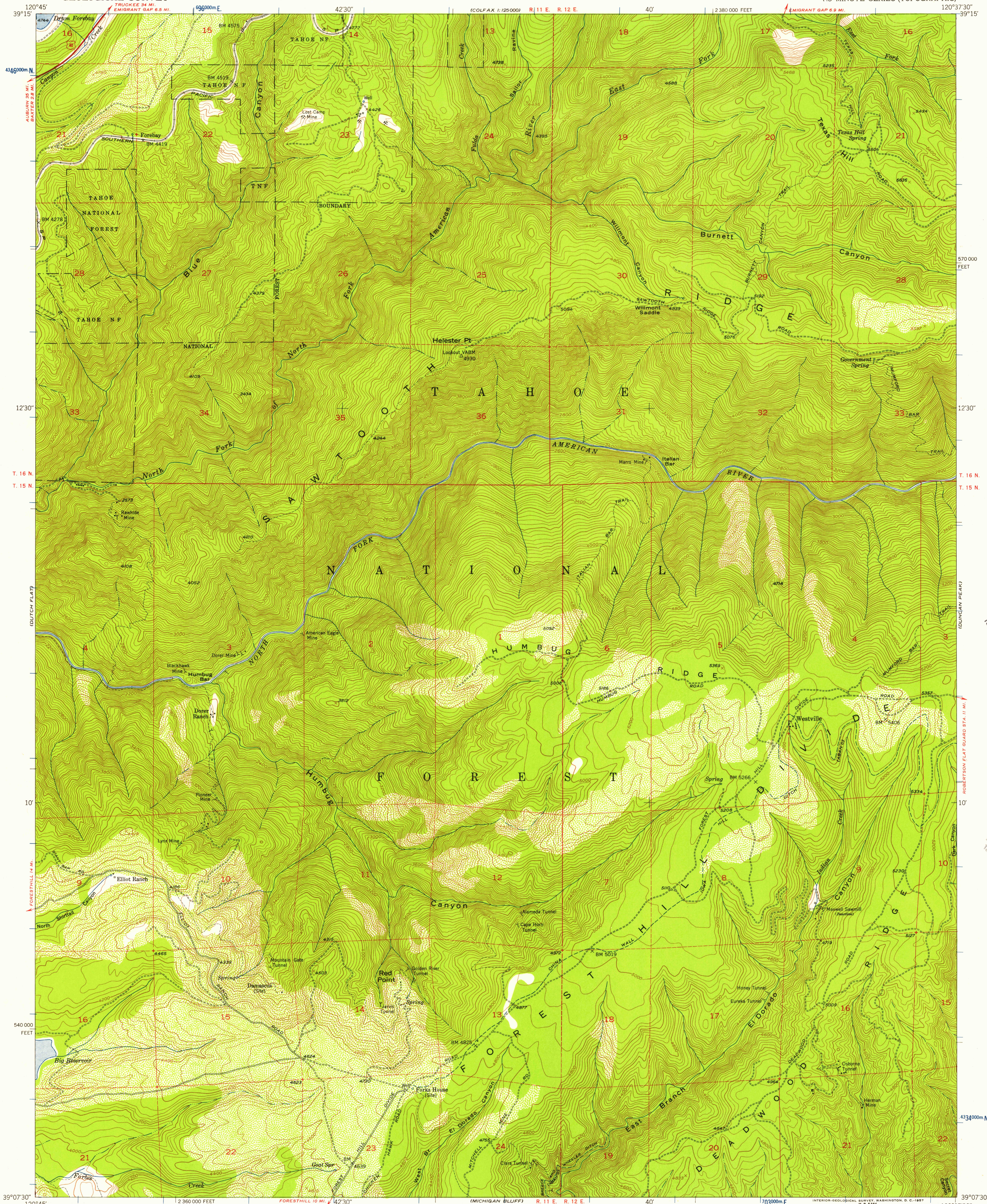


UNITED STATES  
DEPARTMENT OF THE INTERIOR  
GEOLOGICAL SURVEY

WESTVILLE QUADRANGLE  
CALIFORNIA-PLACER CO.  
7.5 MINUTE SERIES (TOPOGRAPHIC)



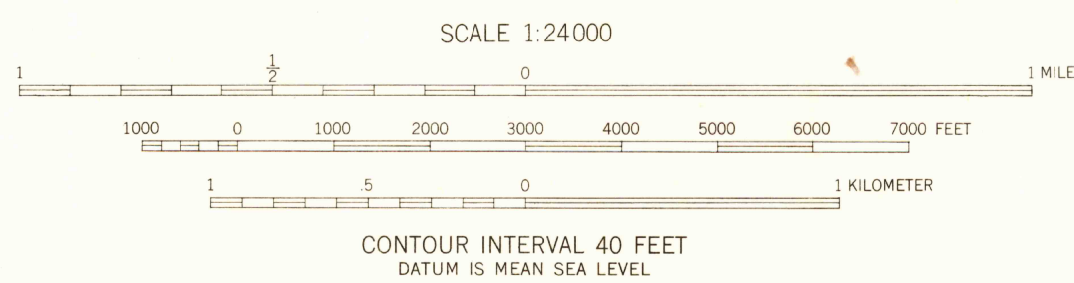
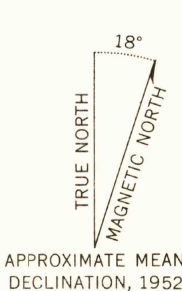
Mapped, edited, and published by the Geological Survey  
Control by USGS and USC&GS

Topography from aerial photographs by multiplex methods  
Aerial photographs taken 1948. Field check 1952

Polyconic projection. 1927 North American datum  
10,000-foot grid based on California coordinate system, zone 2

Dashed land lines indicate approximate locations  
Unchecked elevations are shown in brown

1000-meter Universal Transverse Mercator grid ticks,  
zone 10, shown in blue



USGS  
Historical File  
Topographic Division



ROAD CLASSIFICATION  
Heavy-duty ——— 2 LANE 16 LANE Light-duty ———  
Medium-duty ——— 2 LANE 16 LANE Unimproved dirt ———  
U. S. Route ——— State Route ———

U.S.G.S.  
FILE COPY  
TOPOGRAPHIC DIVISION

WESTVILLE, CALIF.  
N3907.5-W12037.5/7.5

1952

U.S.G.S.  
FILE COPY  
TOPOGRAPHIC DIVISION

JUL 19 1957

4855