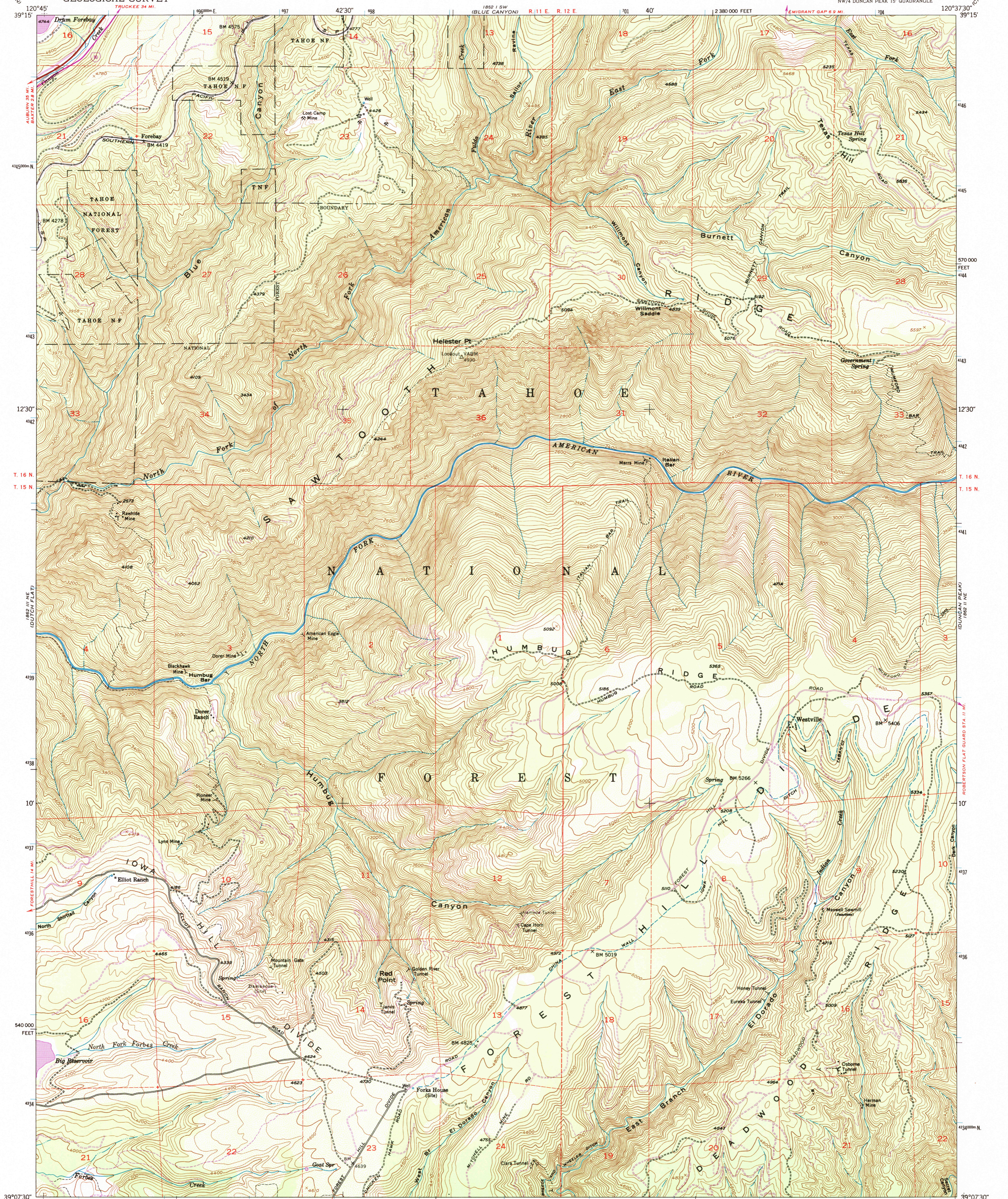


UNITED STATES
DEPARTMENT OF THE INTERIOR
GEOLOGICAL SURVEY

WESTVILLE QUADRANGLE
CALIFORNIA—PLACER CO.
7.5 MINUTE SERIES (TOPOGRAPHIC)
NW/4 DUNCAN PEAK 15' QUADRANGLE



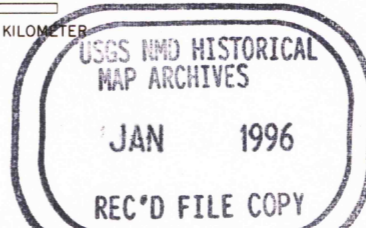
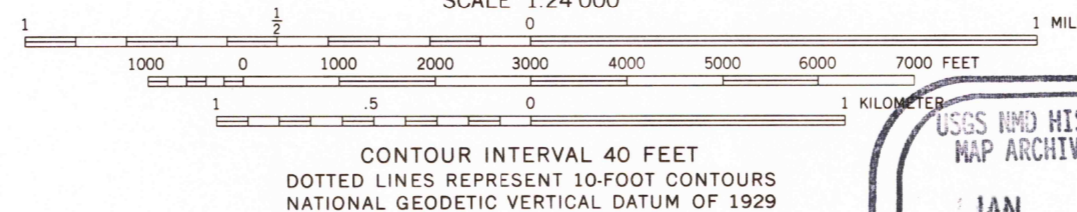
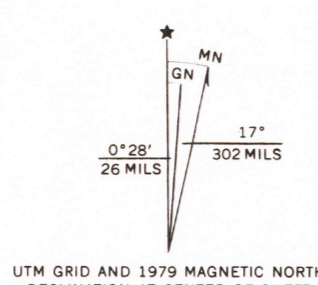
Mapped, edited, and published by the Geological Survey
Control by USGS and NOS/NOAA

Topography from aerial photographs by multiplex methods
Aerial photographs taken 1948. Field check 1952

Polyconic projection. 1927 North American datum
10,000-foot grid based on California coordinate system, zone 2
1000-meter Universal Transverse Mercator grid ticks,
zone 10, shown in blue

To place on the predicted North American Datum 1983
move the projection lines 15 meters north and
89 meters east as shown by dashed corner ticks

There may be private inholdings within the boundaries of
the National or State reservations shown on this map



ROAD CLASSIFICATION
Heavy-duty 4 LANE 6 LANE Light-duty
Medium-duty 4 LANE 6 LANE Unimproved dirt
Interstate Route



WESTVILLE, CALIF.
NW/4 DUNCAN PEAK 15' QUADRANGLE
N3907.5—W12037.5/7.5

1952
PHOTOREVISED 1979
DMA 1862 II NW—SERIES V895

THIS MAP COMPLIES WITH NATIONAL MAP ACCURACY STANDARDS
FOR SALE BY U. S. GEOLOGICAL SURVEY, DENVER, COLORADO 80225, OR RESTON, VIRGINIA 22092
A FOLDER DESCRIBING TOPOGRAPHIC MAPS AND SYMBOLS IS AVAILABLE ON REQUEST

Revisions shown in purple compiled by the U.S. Forest Service
from aerial photographs taken 1976 and other source data
This information not field checked. Map edited by the
Geological Survey 1979

