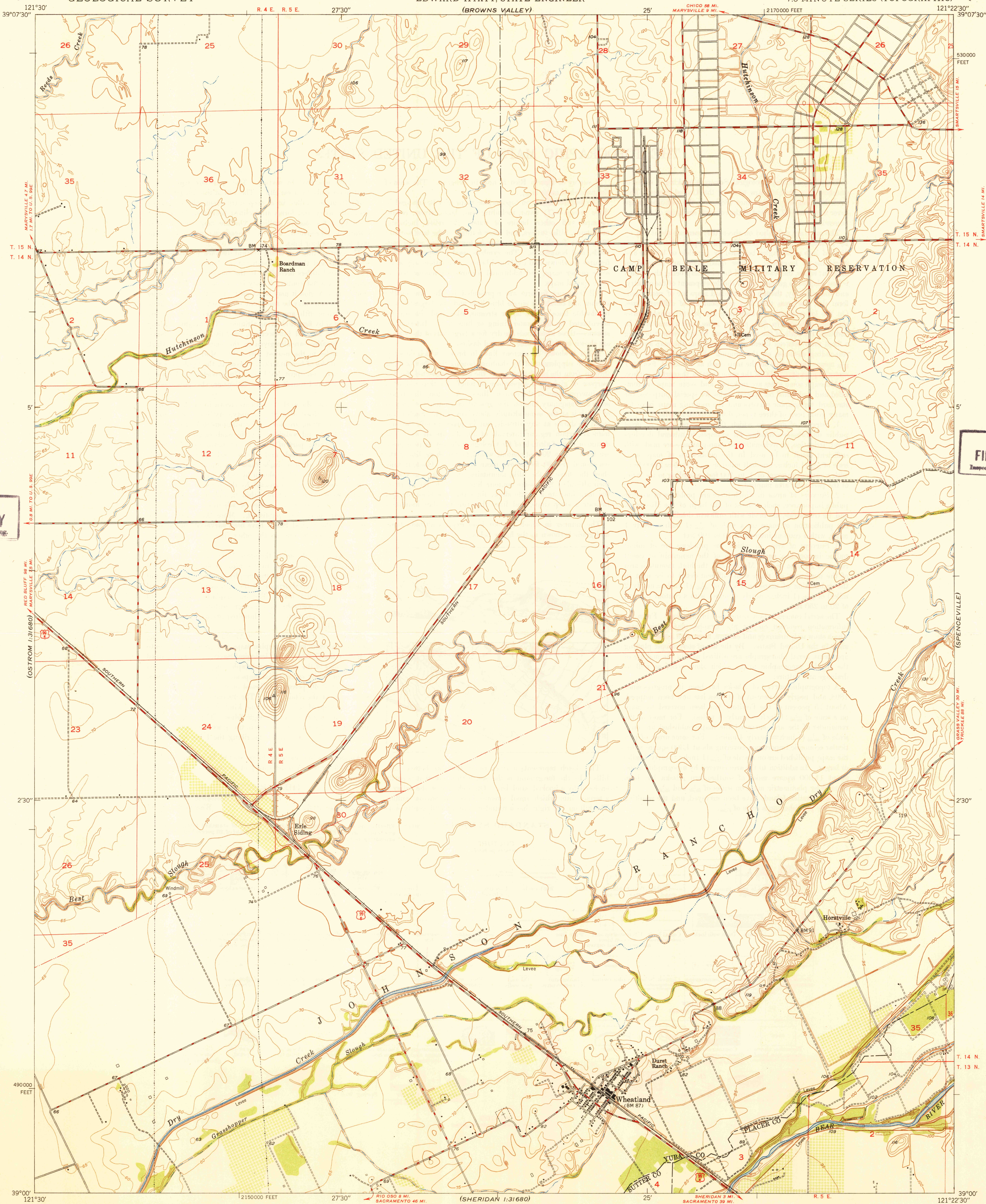


UNITED STATES  
DEPARTMENT OF THE INTERIOR  
GEOLOGICAL SURVEY

STATE OF CALIFORNIA  
EARL WARREN, GOVERNOR  
C. H. PURCELL, DIRECTOR OF PUBLIC WORKS  
EDWARD HYATT, STATE ENGINEER  
(BROWNS VALLEY)

WHEATLAND QUADRANGLE  
CALIFORNIA  
7.5 MINUTE SERIES (TOPOGRAPHIC)

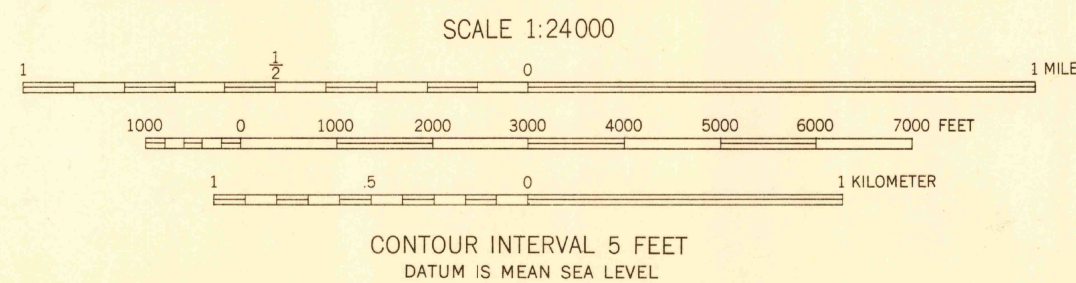


U. S. G. S.  
FILE COPY  
Inspection and Editing.

U. S. G. S.  
FILE COPY  
Inspection and Editing.

Maped, edited, and published by the Geological Survey  
Control by USGS and USC & GS  
Culture and drainage in part compiled from  
aerial photographs taken 1943  
Topography by plane-table methods, 1947  
Polyconic projection. 1927 North American datum  
10,000-foot grid based on California coordinate system,  
zone 2  
Buildings omitted from Camp Beale Military Reservation

TRUE NORTH  
MAGNETIC NORTH  
APPROXIMATE MEAN  
DECLINATION, 1947



USGS  
Historical File  
Topographic Division

ROAD CLASSIFICATION  
HARD-SURFACE ALL WEATHER ROADS DRY WEATHER ROADS  
Heavy-duty. ———— 2 LANE LANE Improved dirt. ————  
Medium-duty. ———— 4 LANE LANE Unimproved dirt. ————  
Loose-surface, graded, or narrow hard-surface. ————  
U. S. Route State Route

U. S. G. S.  
FILE COPY  
Inspection and Editing.

WHEATLAND, CALIF.  
N3900-W12122.5/7.5

PRINTED 1949

APR 13 1949 3210