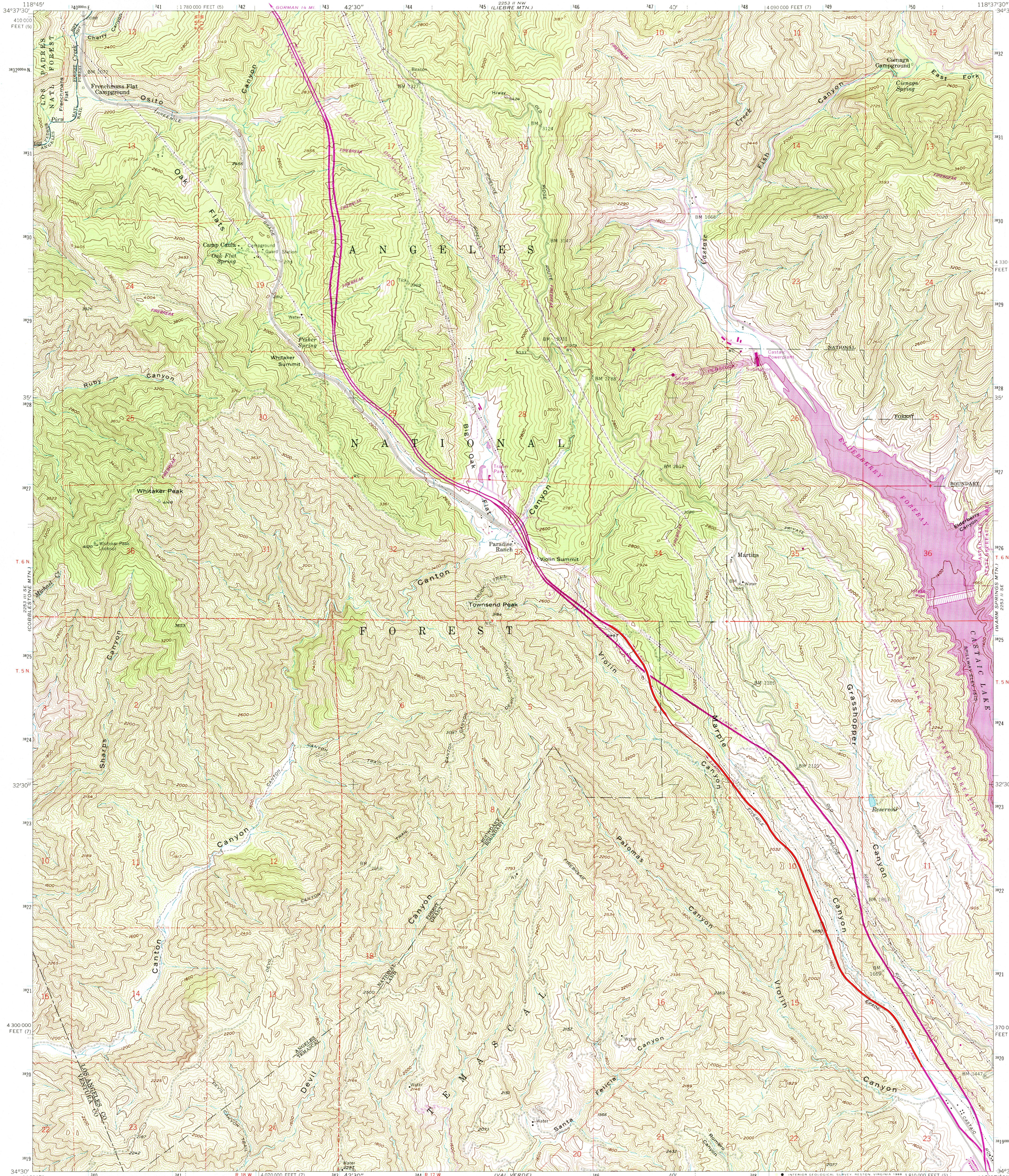


UNITED STATES  
DEPARTMENT OF THE INTERIOR  
GEOLOGICAL SURVEY

WHITAKER PEAK QUADRANGLE  
CALIFORNIA  
7.5 MINUTE SERIES (TOPOGRAPHIC)



Mapped, edited, and published by the Geological Survey

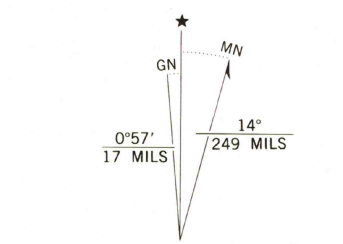
Control by USGS, NOS/NOAA, and Los Angeles Co.  
Topography from aerial photographs by photogrammetric methods  
Aerial photographs taken 1956. Field check 1958

Polyconic projection. 1927 North American Datum  
10,000-foot grid based on California coordinate system, zones 7 and 5  
1000-meter Universal Transverse Mercator grid ticks,  
zone 11, shown in blue

Dashed land lines indicate approximate locations  
Certain land lines are omitted in T. 6 N. - R. 18 W.  
because of insufficient data

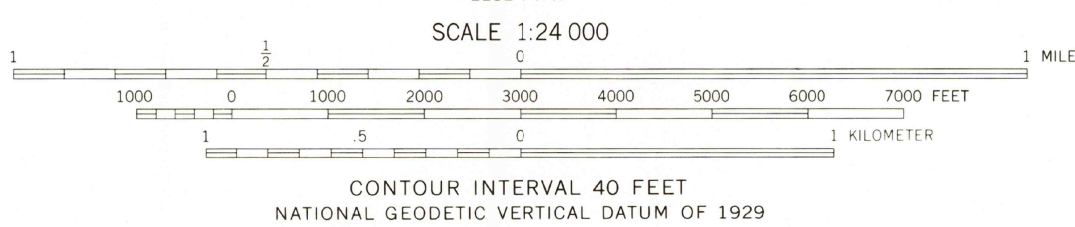
Unchecked elevations are shown in brown

To place on the predicted North American Datum 1983  
move the projection lines 5 meters north and  
85 meters east as shown by dashed corner ticks

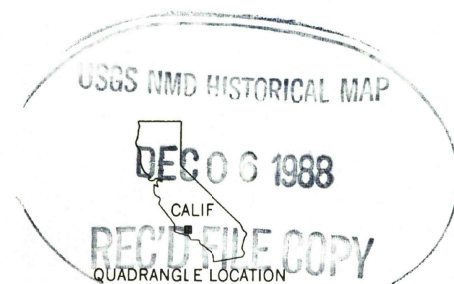


UTM GRID and 1988 MAGNETIC NORTH  
DECLINATION AT CENTER OF SHEET

There may be private inholdings within  
the boundaries of the National or State  
reservations shown on this map



THIS MAP COMPLIES WITH NATIONAL MAP ACCURACY STANDARDS  
FOR SALE BY U. S. GEOLOGICAL SURVEY, DENVER, COLORADO 80225, OR RESTON, VIRGINIA 22092  
A FOLDER DESCRIBING TOPOGRAPHIC MAPS AND SYMBOLS IS AVAILABLE ON REQUEST



Revisions shown in purple and woodland compiled from  
aerial photographs taken 1985 and other source data.  
Partial check by U. S. Forest Service. Map edited 1988

ROAD CLASSIFICATION	
Heavy-duty	Light-duty
Medium-duty	Unimproved dirt
	Interstate Route

WHITAKER PEAK, CALIF.  
34118-E6-TF-024

1958  
PHOTOREVISED 1988  
DMA 2253 II SW-SERIES V895