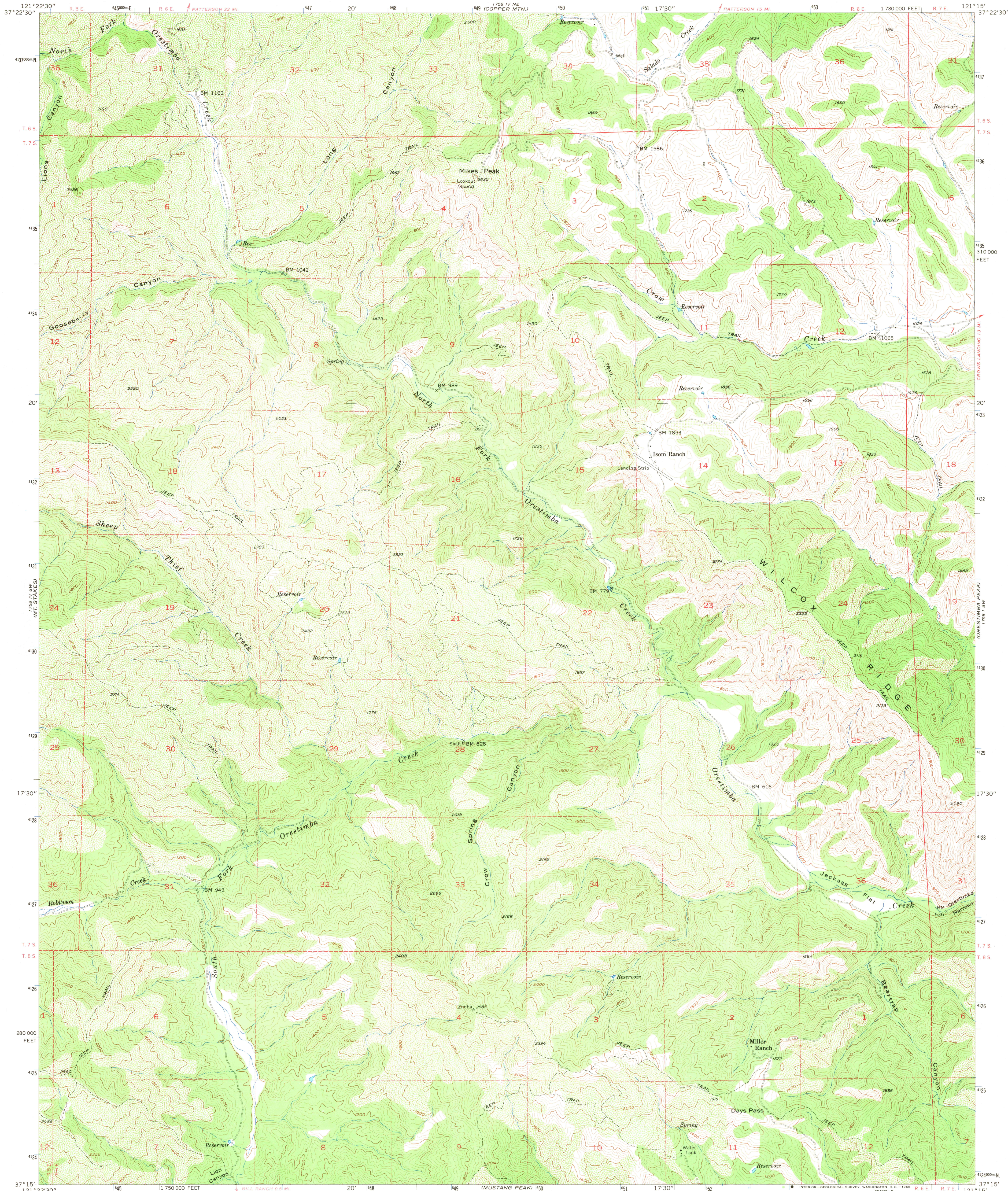
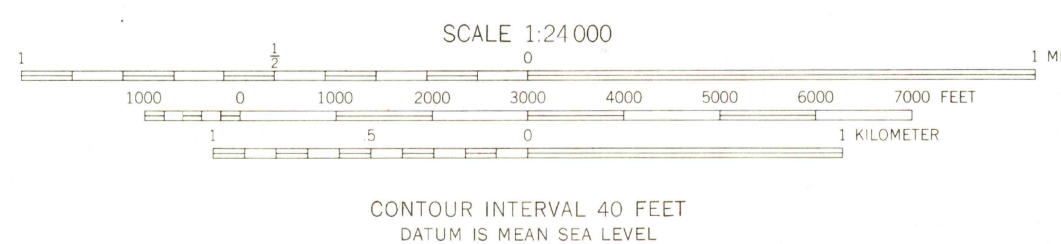
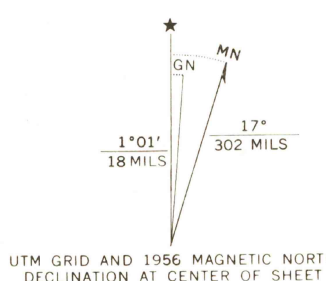


UNITED STATES
DEPARTMENT OF THE INTERIOR
GEOLOGICAL SURVEY

WILCOX RIDGE QUADRANGLE
CALIFORNIA-STANISLAUS CO.
7.5 MINUTE SERIES (TOPOGRAPHIC)
SE 4 MT. BOARDMAN 15' QUADRANGLE



Mapped, edited, and published by the Geological Survey
Control by USGS, USC&GS, and USCE
Topography from aerial photographs by multiplex methods
Aerial photographs taken 1953. Field check 1956
Polyconic projection. 1927 North American datum
10,000-foot grid based on California coordinate system, zone 3
1000-meter Universal Transverse Mercator grid ticks,
zone 10, shown in blue
Dashed land lines indicate approximate locations
Unchecked elevations are shown in brown



THIS MAP COMPLIES WITH NATIONAL MAP ACCURACY STANDARDS
FOR SALE BY U. S. GEOLOGICAL SURVEY, DENVER, COLORADO 80225 OR WASHINGTON, D. C. 20242
A FOLDER DESCRIBING TOPOGRAPHIC MAPS AND SYMBOLS IS AVAILABLE ON REQUEST

USGS
Historical File
Topographic Division



ROAD CLASSIFICATION
Unimproved dirt - - - - -

WILCOX RIDGE, CALIF.
SE 4 MT. BOARDMAN 15' QUADRANGLE
N3715-W12115/7.5

1956

AMS 1758 IV SE-SERIES V895

2500
APR 1 1968