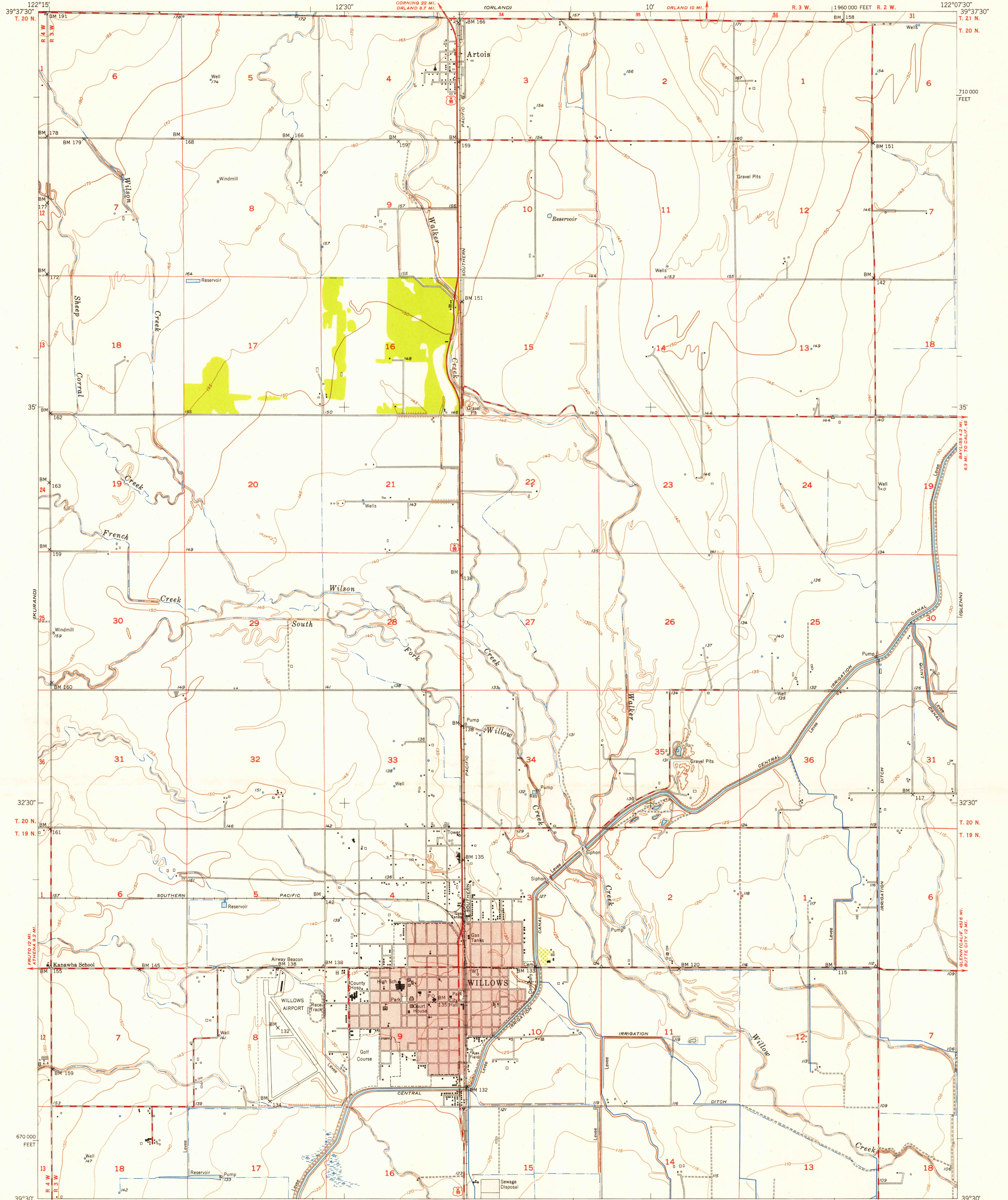


U.S.G.S. FILE COPY

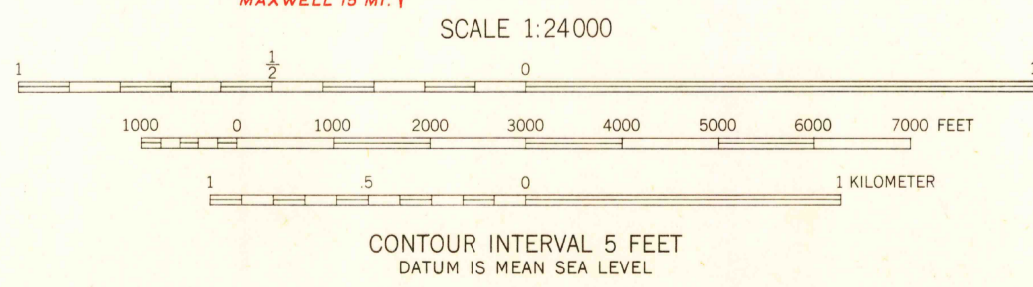
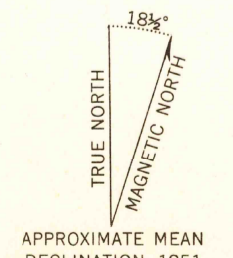
UNITED STATES DEPARTMENT OF THE INTERIOR GEOLOGICAL SURVEY

STATE OF CALIFORNIA EARL WARREN, GOVERNOR FRANK B. DURKEE, DIRECTOR OF PUBLIC WORKS A. D. EDMONSTON, STATE ENGINEER

WILLOWS QUADRANGLE CALIFORNIA-GLENN CO. 7.5 MINUTE SERIES (TOPOGRAPHIC) SW/4 WILLOWS 15' QUADRANGLE



Mapped, edited, and published by the Geological Survey Control by USGS and USC&GS Mapped 1904, remapped 1951 Culture and drainage by multiplex methods from aerial photographs taken 1947 Topography by plane-table surveys 1951 Polyconic projection. 1927 North American datum 10,000-foot grid based on California coordinate system, zone 2 Red tint indicates area in which only landmark buildings are shown



USGS Historical File Topographic Division

ROAD CLASSIFICATION table with columns for Heavy-duty, Medium-duty, U.S. Route, 4 Lane 16 Lane, Light-duty, and Unimproved dirt.

U.S.G.S. FILE COPY

WILLOWS, CALIF. SW/4 WILLOWS 15' QUADRANGLE N3930-W12207.5/7.5

FOR SALE BY U. S. GEOLOGICAL SURVEY, FEDERAL CENTER, DENVER, COLORADO OR WASHINGTON 25, D. C. A FOLDER DESCRIBING TOPOGRAPHIC MAPS AND SYMBOLS IS AVAILABLE ON REQUEST

NAME CHANGED FROM LYMAN (1:21670) AUG 10 1952 2105