

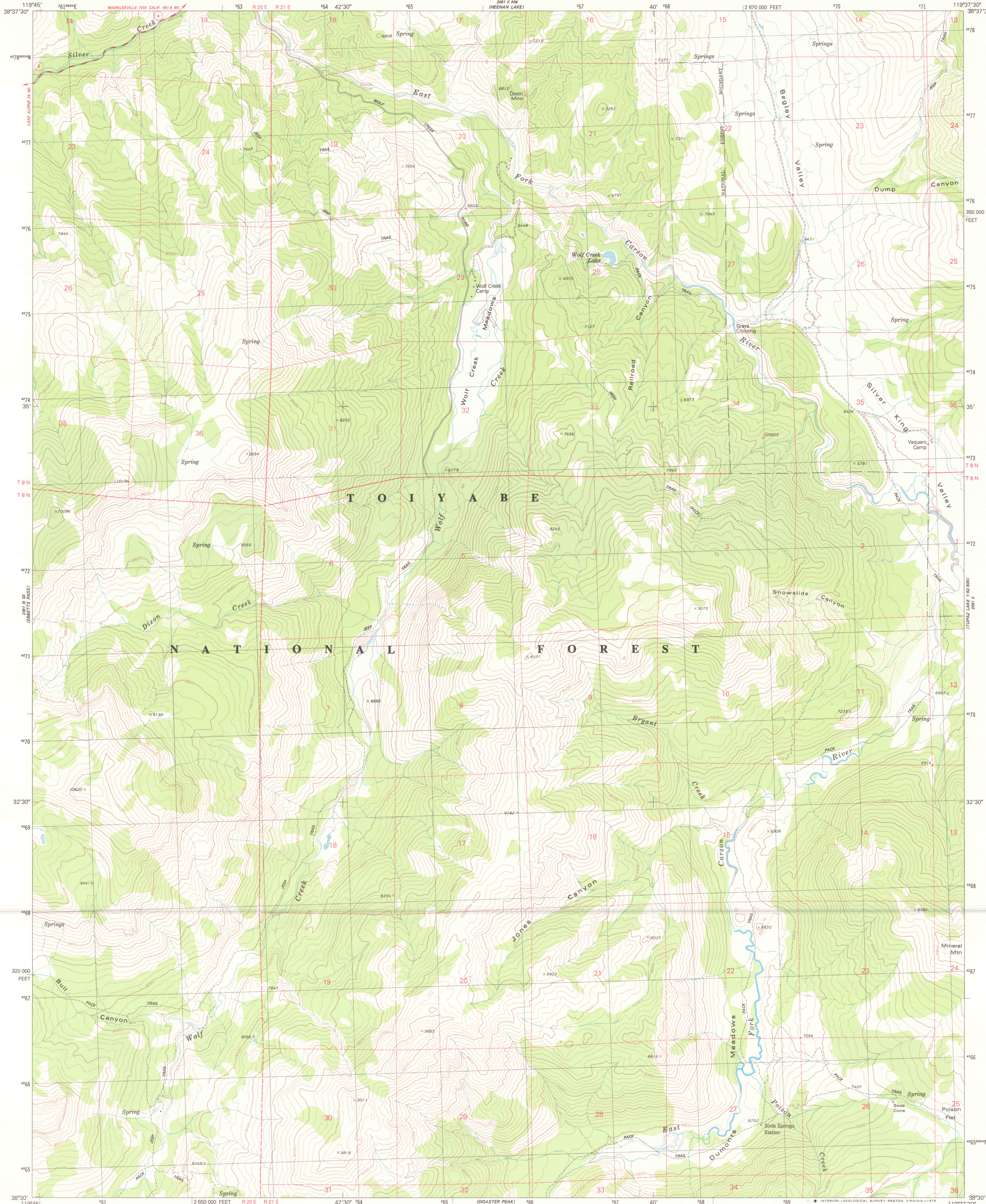
2001 II SE
(MARKLEVILLE)

2001 II
(TOPAZ LAKE 1:50,000)

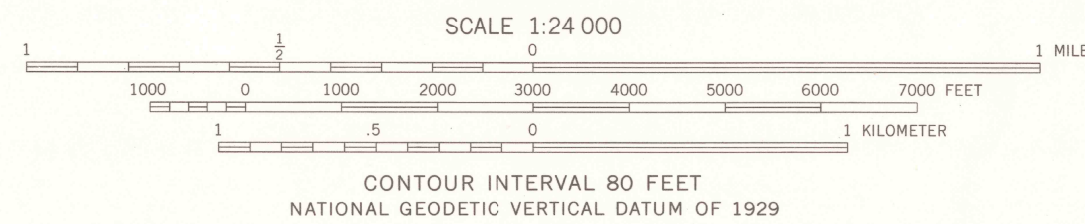
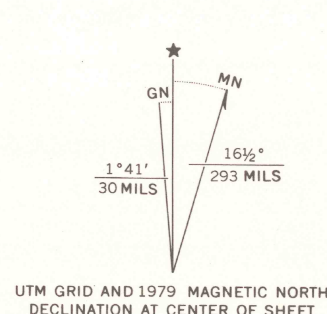
UNITED STATES
DEPARTMENT OF THE INTERIOR
GEOLOGICAL SURVEY



WOLF CREEK QUADRANGLE
CALIFORNIA-ALPINE CO.
7.5 MINUTE SERIES (TOPOGRAPHIC)
SW/4 TOPAZ LAKE 15' QUADRANGLE



Mapped, edited, and published by the Geological Survey
Control by USGS and NOS/NOAA
Topography by photogrammetric methods from aerial
photographs taken 1973. Field checked 1974. Map edited 1979
Projection and 10,000-foot grid ticks: California coordinate
system, zone 2 (Lambert conformal conic)
1000-meter Universal Transverse Mercator grid, zone 11
1927 North American Datum
To place on the predicted North American Datum 1983
move the projection lines 13 meters north and
87 meters east as shown by dashed corner ticks
Where omitted, land lines have not been established
There may be private inholdings within the boundaries of
the National or State reservations shown on this map



THIS MAP COMPLIES WITH NATIONAL MAP ACCURACY STANDARDS
FOR SALE BY U. S. GEOLOGICAL SURVEY, DENVER, COLORADO 80225, OR RESTON, VIRGINIA 22092
A FOLDER DESCRIBING TOPOGRAPHIC MAPS AND SYMBOLS IS AVAILABLE ON REQUEST



ROAD CLASSIFICATION	
Primary highway, hard surface	Light-duty road, hard or improved surface
Secondary highway, hard surface	Unimproved road
Interstate Route	U. S. Route
	State Route

WOLF CREEK, CALIF.
SW/4 TOPAZ LAKE 15' QUADRANGLE
N3830-W11937.57.5

1979

DMA 2061 II SW-SERIES 7895

