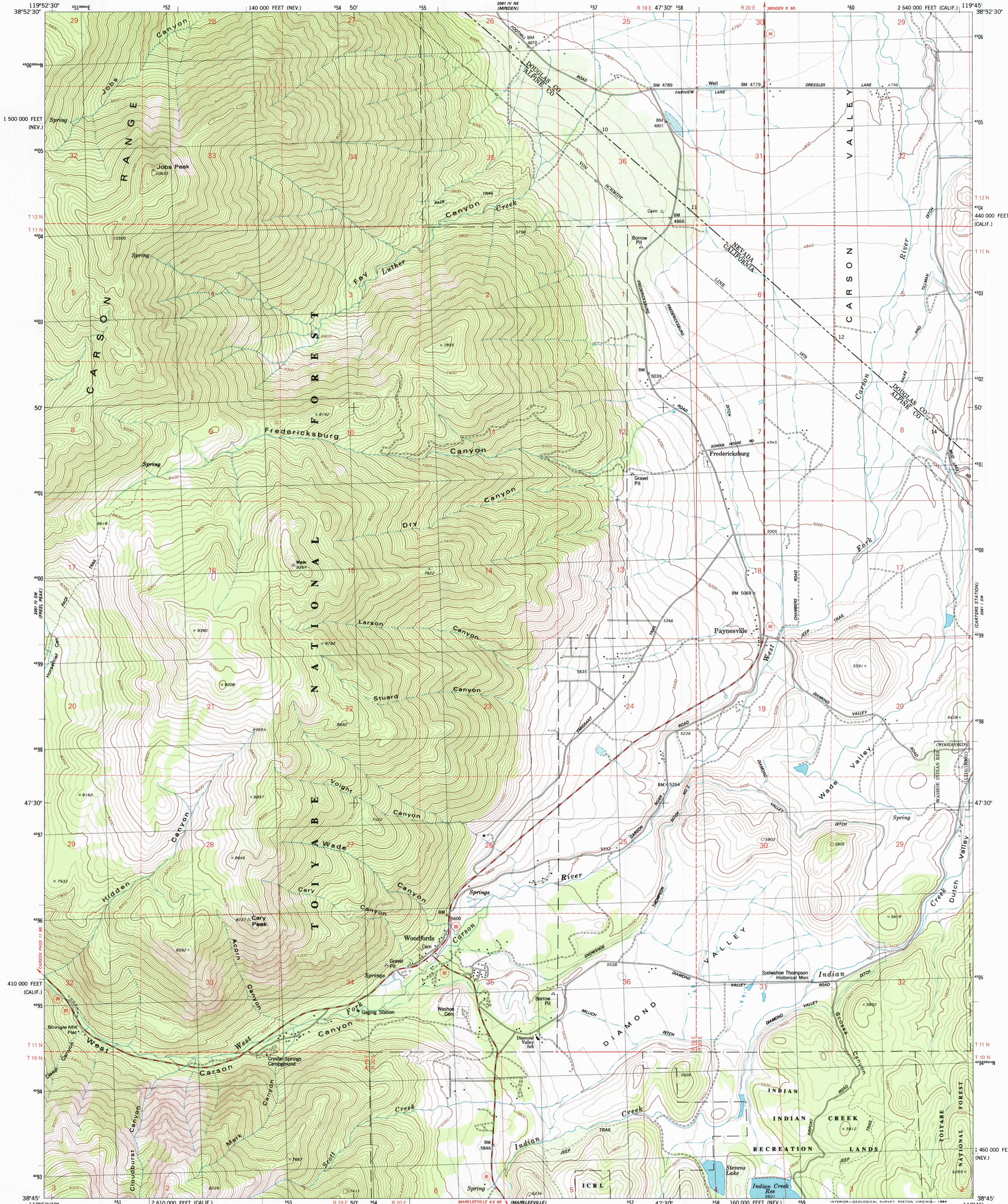


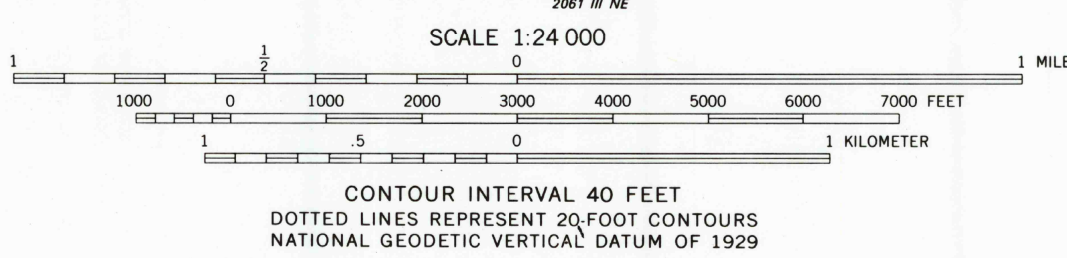
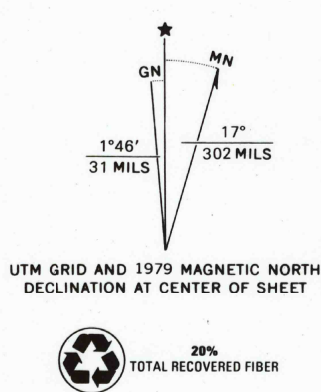


U.S. DEPARTMENT OF THE INTERIOR
U.S. GEOLOGICAL SURVEY

WOODFORDS QUADRANGLE
CALIFORNIA-NEVADA
7.5 MINUTE SERIES (TOPOGRAPHIC)
SE/4 FREEL PEAK 15' QUADRANGLE



Mapped, edited, and published by the Geological Survey
Control by USGS and NOS/NOAA
Topography by photogrammetric methods from aerial
photographs taken 1973. Field checked 1974. Map edited 1979
Projection: California coordinate system, zone 2
(Lambert conformal conic)
10,000-foot grid ticks based on California coordinate system,
zone 2 and Nevada coordinate system, west zone
1000-meter Universal Transverse Mercator grid, zone 11
1927 North American datum
To place on the predicted North American Datum 1983
move the projection lines 13 meters north and
87 meters east as shown by dashed corner ticks
There may be private inholdings within the boundaries of
the National or State reservations shown on this map



ROAD CLASSIFICATION
Primary highway, hard surface
Secondary highway, hard surface
Light-duty road, hard or improved surface
Unimproved road
Interstate Route
U.S. Route
State Route



WOODFORDS, CALIF.-NEV.
SE/4 FREEL PEAK 15' QUADRANGLE
N3845-W11945/7.5

1979
DMA 2061 IV SE-SERIES V895

THIS MAP COMPLIES WITH NATIONAL MAP ACCURACY STANDARDS
FOR SALE BY U.S. GEOLOGICAL SURVEY, P.O. BOX 25286, DENVER, COLORADO 80225
A FOLDER DESCRIBING TOPOGRAPHIC MAPS AND SYMBOLS IS AVAILABLE ON REQUEST

