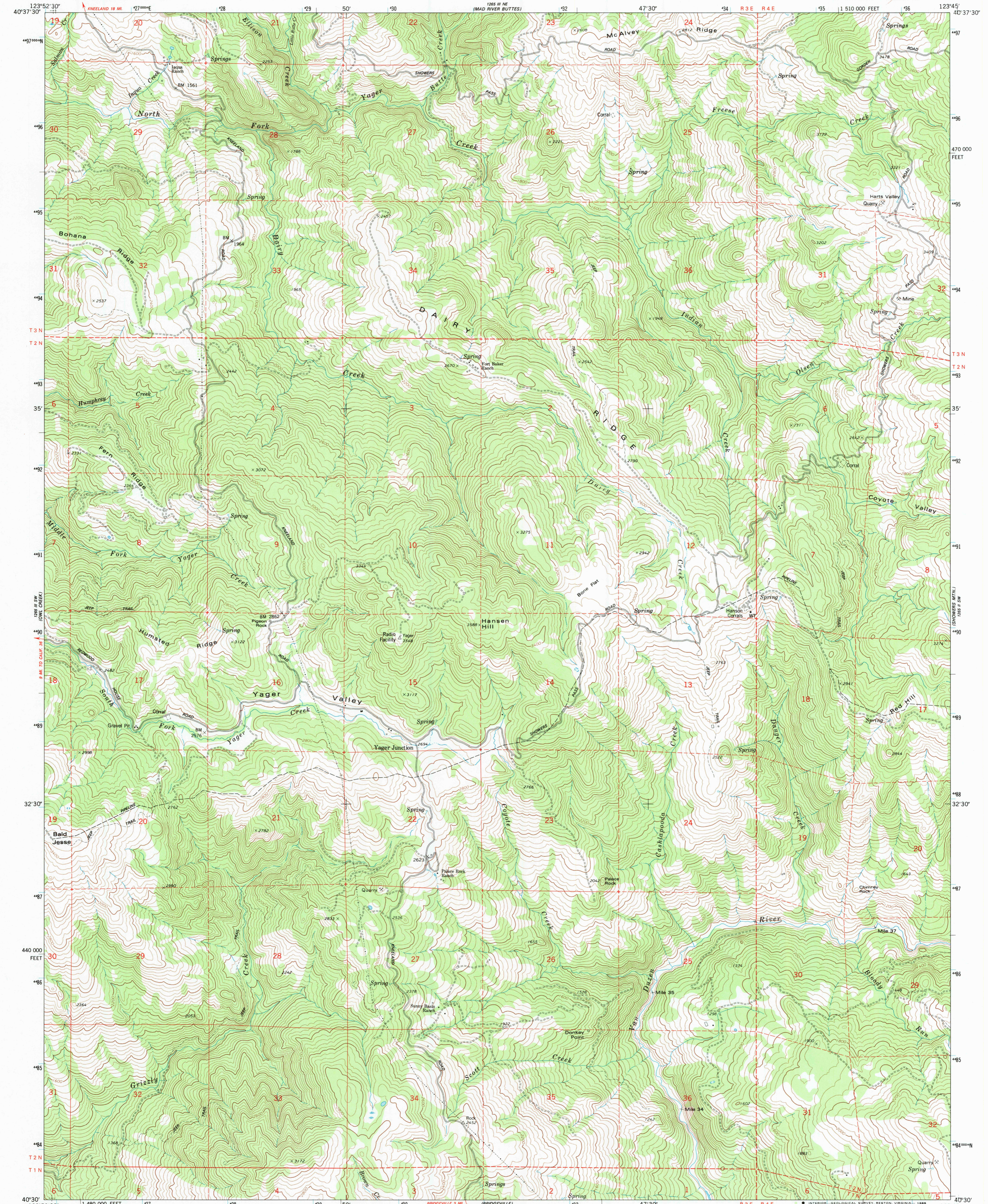
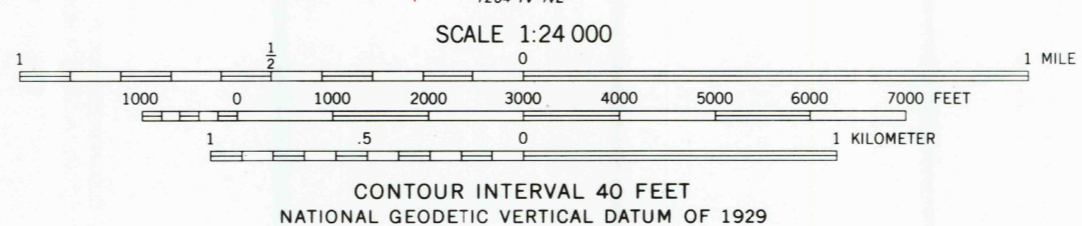
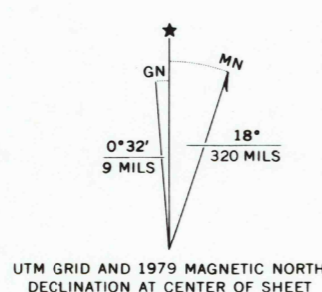


UNITED STATES
DEPARTMENT OF THE INTERIOR
GEOLOGICAL SURVEY

YAGER JUNCTION QUADRANGLE
CALIFORNIA—HUMBOLDT CO.
7.5 MINUTE SERIES (TOPOGRAPHIC)
SE/4 IAQUA BUTTES 15' QUADRANGLE



Mapped, edited, and published by the Geological Survey
Control by USGS and NOS/NOAA
Topography by photogrammetric methods from aerial
photographs taken 1972. Field checked 1973
Map edited 1979
Projection and 10,000-foot grid ticks: California coordinate
system, zone 1 (Lambert conformal conic)
1000-meter Universal Transverse Mercator grid ticks,
zone 10, shown in blue. 1927 North American datum
To place on the predicted North American Datum 1983
move the projection lines 20 meters north and
96 meters east as shown by dashed corner ticks
Certain land lines are omitted because of insufficient data



ROAD CLASSIFICATION
Primary highway, hard surface
Secondary highway, hard surface
Light-duty road, hard or improved surface
Unimproved road
Interstate Route
U. S. Route
State Route

YAGER JUNCTION, CALIF.
SE/4 IAQUA BUTTES 15' QUADRANGLE
40123-E7-TF-024

1979

DMA 1265 III SE—SERIES V895

FOR SALE BY U. S. GEOLOGICAL SURVEY, DENVER, COLORADO 80225, OR RESTON, VIRGINIA 22092
A FOLDER DESCRIBING TOPOGRAPHIC MAPS AND SYMBOLS IS AVAILABLE ON REQUEST