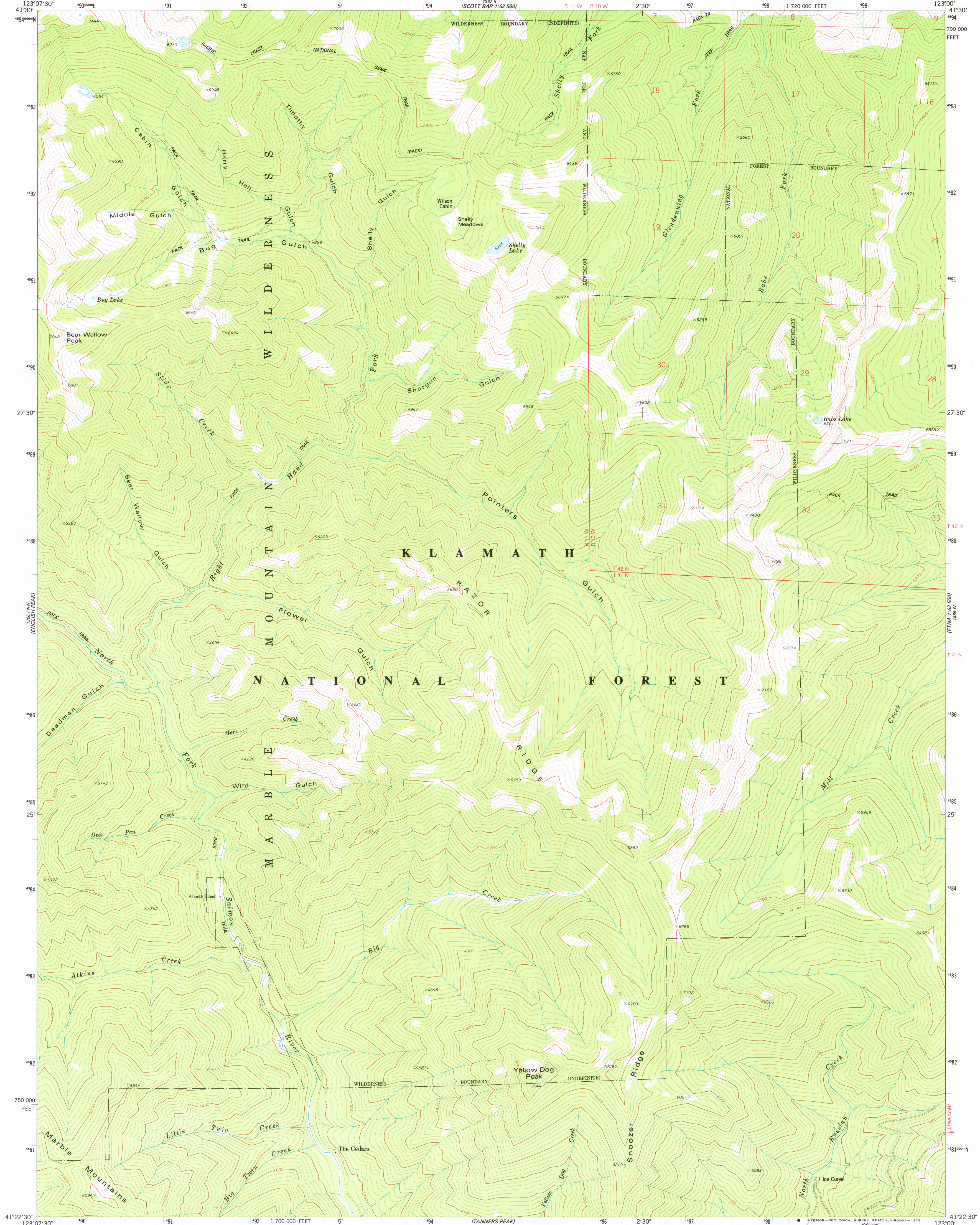


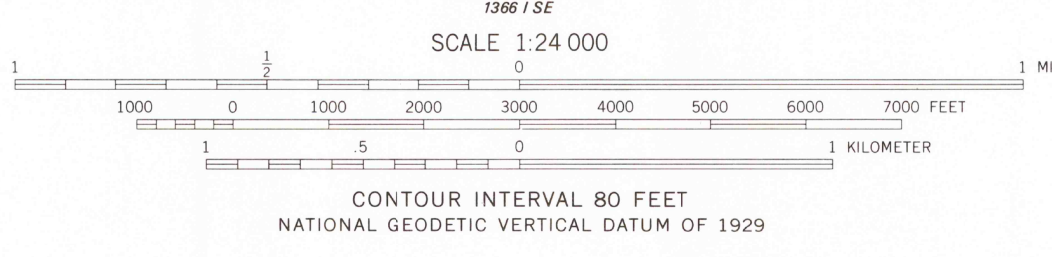
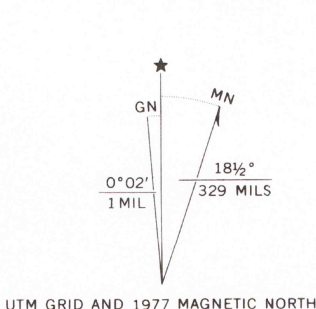
SCOTT BAR 1:62,500
1:62,500

UNITED STATES
DEPARTMENT OF THE INTERIOR
GEOLOGICAL SURVEY

YELLOW DOG PEAK QUADRANGLE
CALIFORNIA—SISKIYOU CO.
7.5 MINUTE SERIES (TOPOGRAPHIC)
NE4 SAWYERS BAR 15' QUADRANGLE
1:62,500



Mapped, edited, and published by the Geological Survey
Control by USGS and NOS/NOAA
Topography by photogrammetric methods from aerial
photographs taken 1972-73. Field checked 1974
Projection and 10,000-foot grid ticks: California coordinate
system, zone 1 (Lambert conformal conic)
1000-meter Universal Transverse Mercator grid ticks,
zone 10, shown in blue. 1927 North American datum
Certain land lines are omitted because of insufficient data



ROAD CLASSIFICATION
Primary highway, hard surface
Secondary highway, hard surface
Interstate Route
Light-duty road, hard or improved surface
Unimproved road
U. S. Route
State Route
USGS
Historical File
Topographic Division
YELLOW DOG PEAK, CALIF.
NE4 SAWYERS BAR 15' QUADRANGLE
N4122.5-W12300/7.5
1977
AMS 1366 I NE—SERIES V895

FOR SALE BY U. S. GEOLOGICAL SURVEY, DENVER, COLORADO 80225, OR RESTON, VIRGINIA 22092
A FOLDER DESCRIBING TOPOGRAPHIC MAPS AND SYMBOLS IS AVAILABLE ON REQUEST

3950
FEB 18 1978