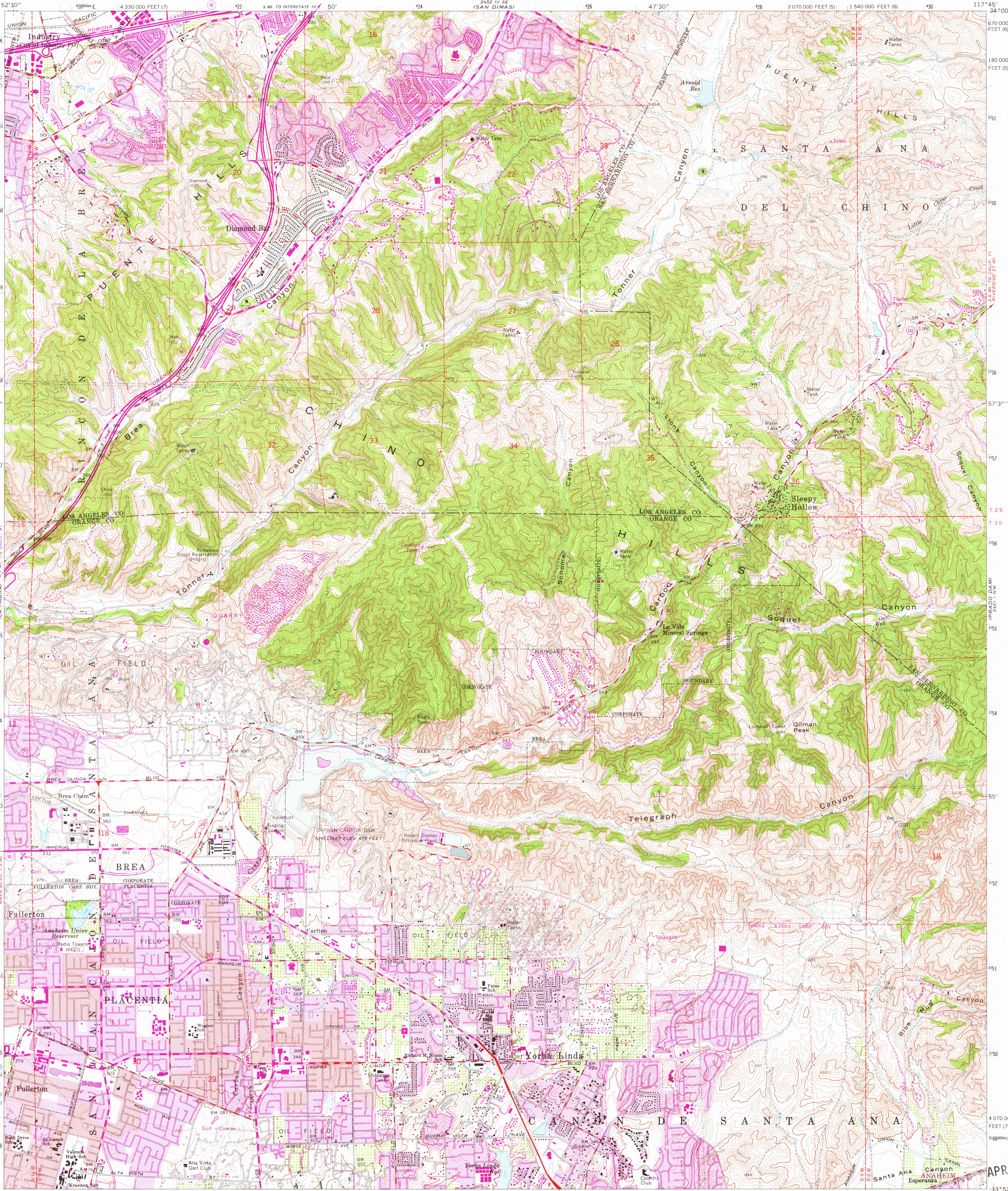


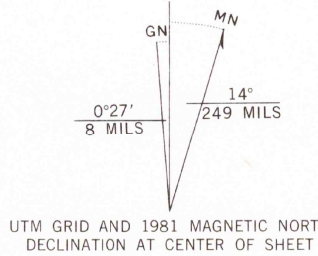
UNITED STATES
DEPARTMENT OF THE INTERIOR
GEOLOGICAL SURVEY

STATE OF CALIFORNIA
DEPARTMENT OF WATER RESOURCES

YORBA LINDA QUADRANGLE
CALIFORNIA
7.5 MINUTE SERIES (TOPOGRAPHIC)



Mapped, edited, and published by the Geological Survey
Control by USGS, NOS/NOAA, Los Angeles County, and Orange County
Topography by photogrammetric methods from aerial
photographs taken 1963. Field checked 1964
Polyconic projection. 10,000-foot grid ticks based on
California coordinate system, zones 6, 7 and 5
1000-meter Universal Transverse Mercator grid ticks,
zone 11, shown in blue. 1927 North American Datum
To place on the predicted North American Datum 1983
move the projection lines 1 meter north and 84 meters
east as shown by dashed corner ticks
Red tint indicates areas in which only landmark buildings are shown
Area covered by dashed light-blue pattern is
subject to controlled inundation
Where omitted, land lines are not shown because of insufficient data
Dotted land lines established by private surveys
Fine red dashed lines indicate selected fence and field lines where
generally visible on aerial photographs. This information is unchecked



SCALE 1:24,000
CONTOUR INTERVAL 20 FEET
DOTTED LINES REPRESENT 10-FOOT CONTOURS
NATIONAL GEODETIC VERTICAL DATUM OF 1929
THIS MAP COMPLIES WITH NATIONAL MAP ACCURACY STANDARDS
FOR SALE BY U. S. GEOLOGICAL SURVEY, DENVER, COLORADO 80225, OR RESTON, VIRGINIA 22092
A FOLDER DESCRIBING TOPOGRAPHIC MAPS AND SYMBOLS IS AVAILABLE ON REQUEST

RETURN TO:
NHD HISTORICAL MAP ARCHIVES
USGS NATIONAL CENTER, MS-522
RESTON, VA 22092

Revisions shown in purple and woodland compiled from
aerial photographs taken 1978 and other sources
This information not field checked. Map edited 1981
Purple tint indicates extension of urban areas

ROAD CLASSIFICATION
Heavy-duty ——— Light-duty ———
Medium-duty ——— Unimproved dirt ———
State Route ———
YORBA LINDA, CALIF.
N3352.5-W11745.7.5
1964
PHOTOREVISED 1981
DMA 2451 IV NE-SERIES V895

APR 15 1982

6652