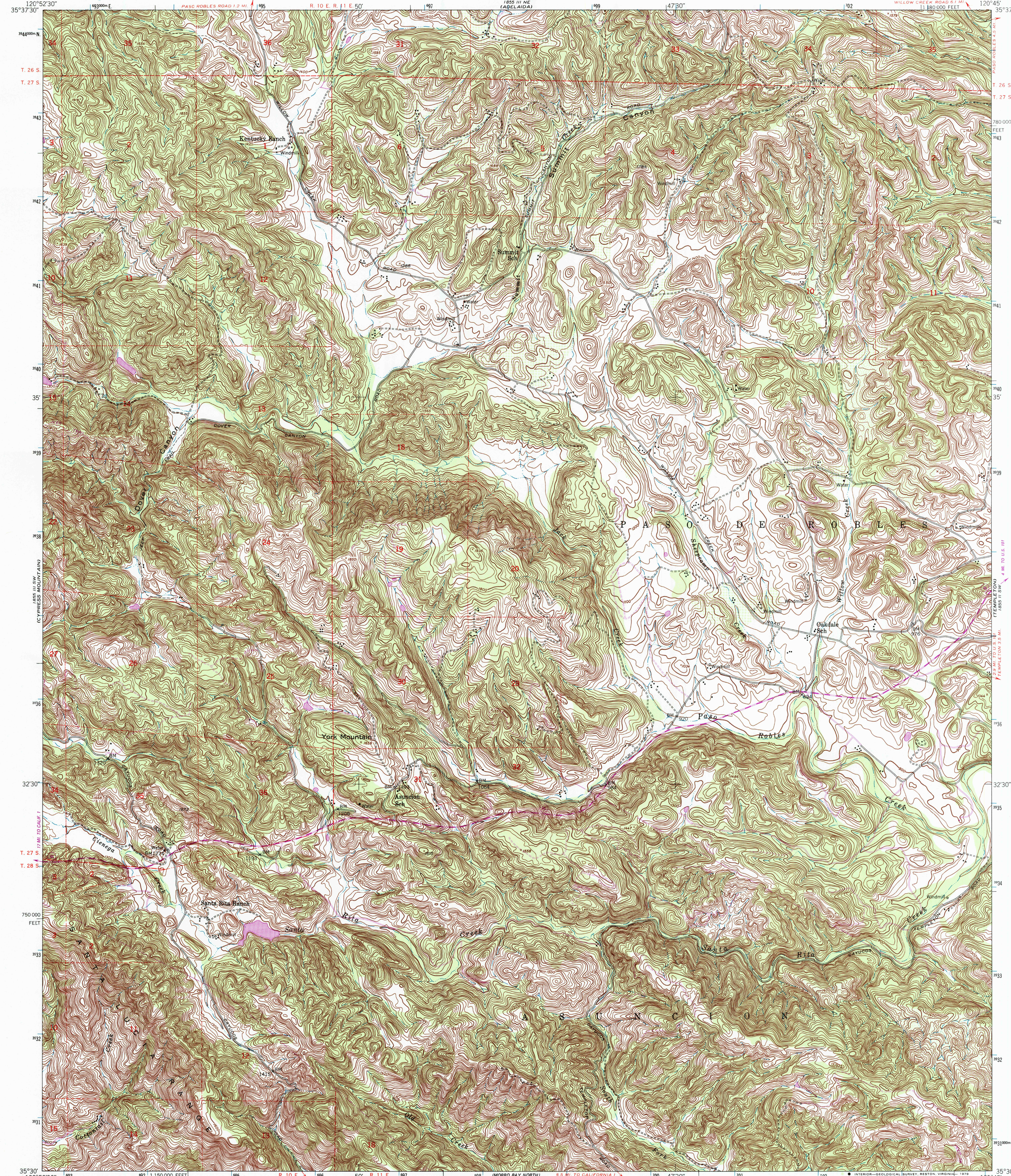


UNITED STATES
DEPARTMENT OF THE INTERIOR
GEOLOGICAL SURVEY

UNITED STATES
DEPARTMENT OF THE ARMY
CORPS OF ENGINEERS

YORK MOUNTAIN QUADRANGLE
CALIFORNIA-SAN LUIS OBISPO CO.
7.5 MINUTE SERIES (TOPOGRAPHIC)
SE/4 ADELAIDA 15' QUADRANGLE



Mapped by the Army Map Service
Published for civil use by the Geological Survey

Control by USGS, NOS/NOAA, and USCE
Topography from aerial photographs by multiplex methods
Aerial photographs taken 1947. Field check 1948

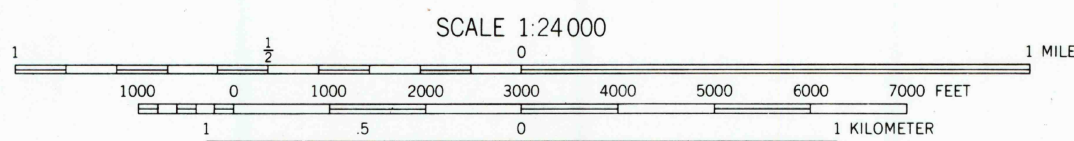
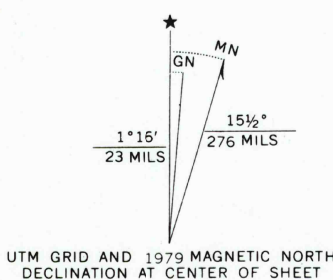
Polyconic projection. 1927 North American datum
10,000-foot grid based on California coordinate system,
zone 5

No distinction is made between dwellings, barns,
commercial and industrial buildings

Unchecked elevations are shown in brown

Dashed land lines indicate approximate locations

1000-meter Universal Transverse Mercator grid ticks,
zone 10, shown in blue



CONTOUR INTERVAL 20 FEET
NATIONAL GEODETIC VERTICAL DATUM OF 1929

THIS MAP COMPLIES WITH NATIONAL MAP ACCURACY STANDARDS
FOR SALE BY U.S. GEOLOGICAL SURVEY, DENVER, COLORADO 80225, OR RESTON, VIRGINIA 22092
A FOLDER DESCRIBING TOPOGRAPHIC MAPS AND SYMBOLS IS AVAILABLE ON REQUEST



QUADRANGLE LOCATION

Revisions shown in purple and woodland compiled by the
Geological Survey from aerial photographs taken 1976 and
other source data. This information is not field checked
Map edited 1979

ROAD CLASSIFICATION			
Heavy-duty	4 LANE 16 LANE	Light-duty	
Medium-duty	4 LANE 16 LANE	Unimproved dirt	=====
U.S. Route		State Route	

YORK MOUNTAIN, CALIF.
SE/4 ADELAIDA 15' QUADRANGLE
N3530-W12045/7.5

1948
PHOTOREVISED 1979
AMS 1855 III SE-SERIES V895