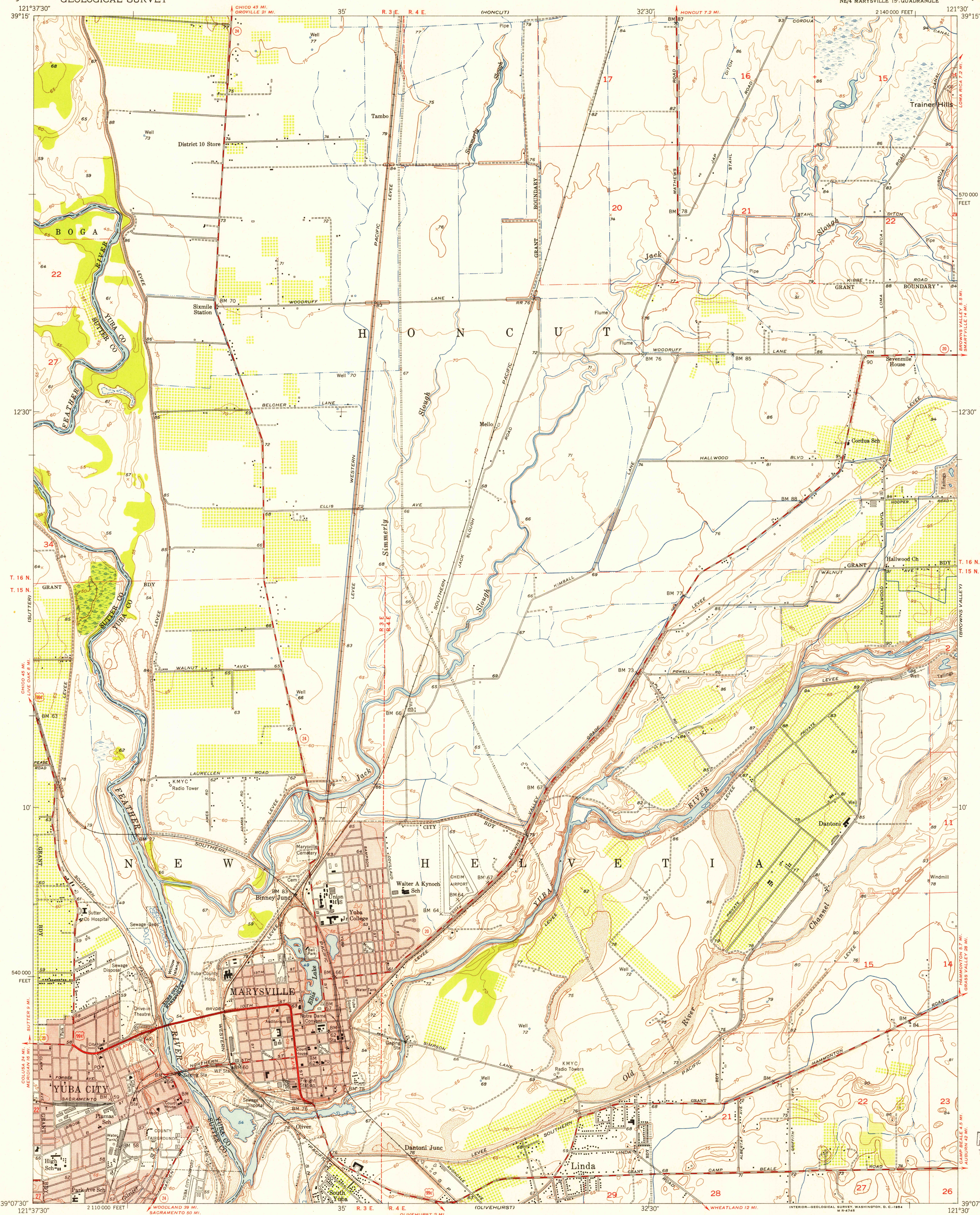


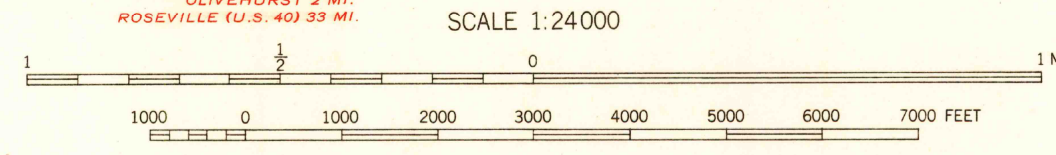
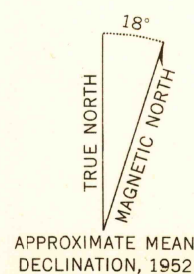
UNITED STATES
DEPARTMENT OF THE INTERIOR
GEOLOGICAL SURVEY

YUBA CITY QUADRANGLE
CALIFORNIA
7.5 MINUTE SERIES (TOPOGRAPHIC)
NE 1/4 MARYSVILLE 15' QUADRANGLE

U.S.G.S.
FILE COPY
TOPOGRAPHIC DIVISION



Mapped, edited, and published by the Geological Survey
Control by USGS and USC&GS
Culture and drainage from photo mosaic by USBR
Aerial photographs taken 1949
Topography from plane-table surveys by USGS 1952
Polyconic projection. 1927 North American datum
10,000-foot grid based on California coordinate system, zone 2
Dashed land lines indicate approximate locations
Land grant boundaries which follow the banks of
the Feather River are not shown
Red tint indicates areas in which only landmark buildings are shown
Areas adjacent to Feather and Yuba Rivers are
subject to inundation during periods of high water



CONTOUR INTERVAL 5 FEET
CONTOURS INCOMPLETE ALONG EMBANKMENTS AND DITCHES
DATUM IS MEAN SEA LEVEL

THIS MAP COMPLIES WITH NATIONAL MAP ACCURACY STANDARDS
FOR SALE BY U. S. GEOLOGICAL SURVEY, FEDERAL CENTER, DENVER, COLORADO OR WASHINGTON 25, D. C.
A FOLDER DESCRIBING TOPOGRAPHIC MAPS AND SYMBOLS IS AVAILABLE ON REQUEST

USGS
Historical File
Topographic Division



ROAD CLASSIFICATION
Heavy-duty 4 LANE 6 LANE Light-duty
Medium-duty 4 LANE 6 LANE Unimproved dirt
U. S. Route State Route

YUBA CITY, CALIF.
NE 1/4 MARYSVILLE 15' QUADRANGLE
N3907.5-W12130/7.5

1952

U.S.G.S.
FILE COPY
TOPOGRAPHIC DIVISION

SEP 27 1954
4270