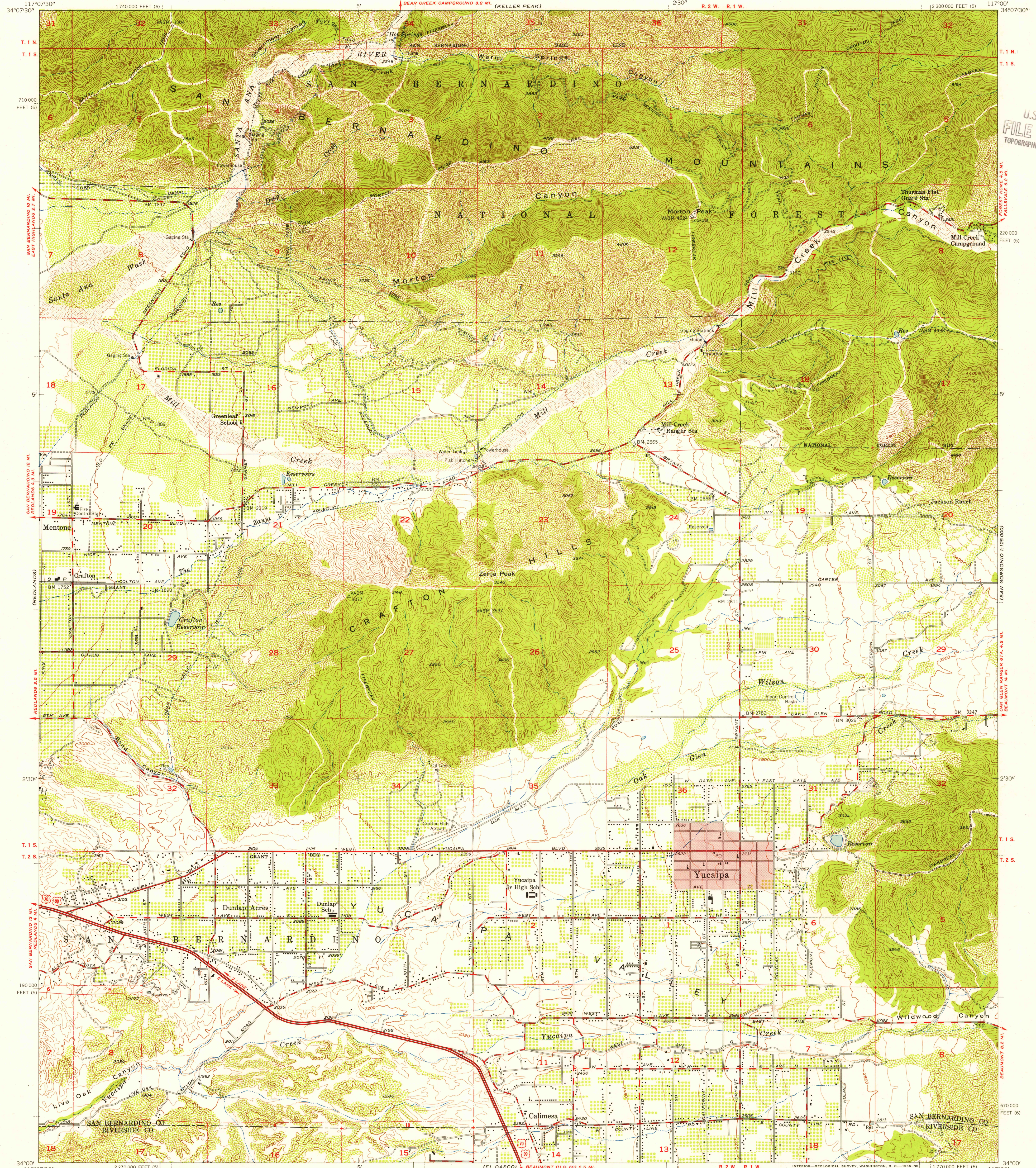


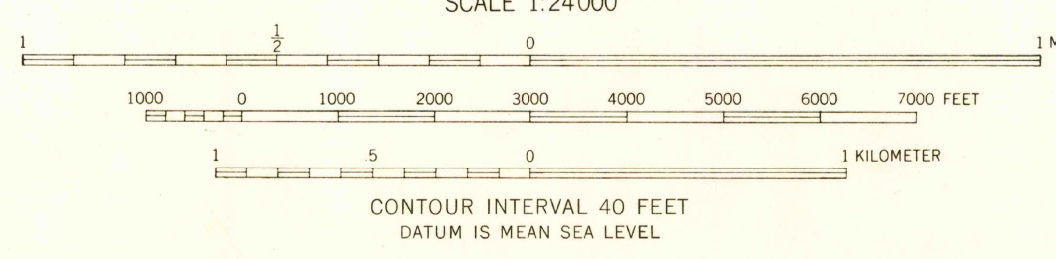
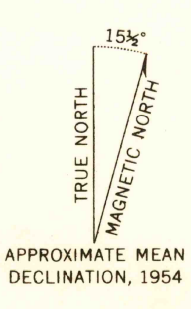
UNITED STATES
DEPARTMENT OF THE INTERIOR
GEOLOGICAL SURVEY

STATE OF CALIFORNIA
GOODWIN J. KNIGHT, GOVERNOR
FRANK B. DURKEE, DIRECTOR OF PUBLIC WORKS
A. D. EDMONSTON, STATE ENGINEER

YUCAIPA QUADRANGLE
CALIFORNIA
7.5 MINUTE SERIES (TOPOGRAPHIC)
SE/4 REDLANDS 15' QUADRANGLE



Mapped, edited, and published by the Geological Survey
Control by USGS, USC&GS, and USCE
Topography from aerial photographs by multiple methods
and by plane-table surveys 1939
Aerial photographs taken 1952. Field check 1954
Polyconic projection. 1927 North American datum
10,000-foot grids based on California coordinate system, zones 5 and 6
Red tint indicates areas in which only landmark buildings are shown
Dashed land lines indicate approximate locations



USGS
Historical File
Topographic Division

ROAD CLASSIFICATION
Heavy-duty ——— Light-duty ———
Medium-duty ——— Unimproved dirt ———
U.S. Route ——— State Route ———



THIS MAP COMPLIES WITH NATIONAL MAP ACCURACY STANDARDS
FOR SALE BY U. S. GEOLOGICAL SURVEY, FEDERAL CENTER, DENVER, COLORADO OR WASHINGTON 25, D. C.
A FOLDER DESCRIBING TOPOGRAPHIC MAPS AND SYMBOLS IS AVAILABLE ON REQUEST

YUCAIPA, CALIF.
SE/4 REDLANDS 15' QUADRANGLE
N3400-W11700/7.5

1954

U.S.G.S.
FILE COPY
TOPOGRAPHIC DIVISION

OCT 3 1955

3732