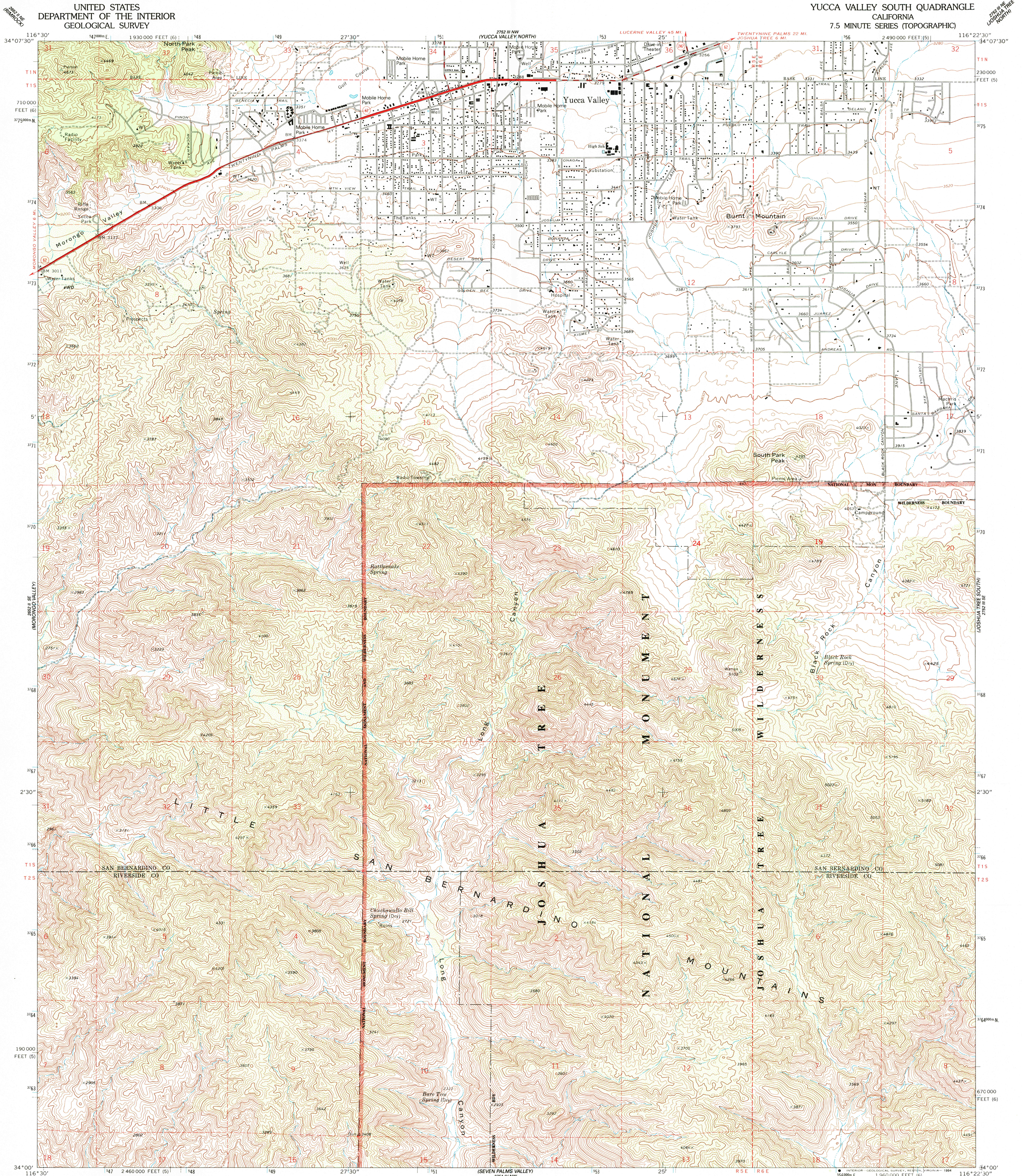


UNITED STATES  
DEPARTMENT OF THE INTERIOR  
GEOLOGICAL SURVEY

YUCCA VALLEY SOUTH QUADRANGLE  
CALIFORNIA  
7.5 MINUTE SERIES (TOPOGRAPHIC)



Produced by the United States Geological Survey in cooperation with California Department of Water Resources  
Control by USGS, NOS/NOAA, and San Bernardino County  
Compiled from aerial photographs taken 1970. Field checked 1972  
North American Datum of 1927 (NAD 27). Projection: California Coordinate System, zone 5 (Lambert Conformal Conic) 10000-foot ticks; California Coordinate System zones 5 and 6 Blue 1000-meter Universal Transverse Mercator ticks, zone 11  
North American Datum of 1983 (NAD 83) is shown by dashed corner ticks. The values of the shift between NAD 27 and NAD 83 for 7.5-minute intersections are obtainable from National Geodetic Survey NADCON software  
There may be private inholdings within the boundaries of the National or State reservations shown on this map

Photoinspected from 1989 source; no major culture or drainage changes observed. Boundaries and names revised 1994

SCALE 1:24 000  
1 000 000 2000 3000 4000 5000 6000 7000 FEET  
1 0 1 2 3 4 5 6 7 8 9 10 KILOMETER  
CONTOUR INTERVAL 40 FEET  
NATIONAL GEODETIC VERTICAL DATUM OF 1929  
THIS MAP COMPLIES WITH NATIONAL MAP ACCURACY STANDARDS  
FOR SALE BY U.S. GEOLOGICAL SURVEY  
DENVER, COLORADO 80225, OR RESTON, VIRGINIA 22092  
A FOLDER DESCRIBING TOPOGRAPHIC MAPS AND SYMBOLS IS AVAILABLE ON REQUEST



ROAD CLASSIFICATION  
Primary highway, hard surface  
Secondary highway, hard surface  
Unimproved road  
Light duty road, hard or improved surface  
Unimproved road  
Interstate Route  
U. S. Route  
State Route  
YUCCA VALLEY SOUTH, CA  
34116-A4-TF-024  
1972  
MINOR REVISION 1994  
DMA 2752 II SW-SERIES V895

