



7.5 X 15 MINUTE QUADRANGLE SHOWING

- Contours and elevations in meters
- Highways, roads and other manmade structures
- Water features
- Woodland areas
- Geographic names



GEOLOGICAL SURVEY

1981

Produced by the United States Geological Survey in cooperation with the State of California
 Control by USGS, NOS/NOAA and U.S. Forest Service
 Compiled by photogrammetric methods from aerial photographs taken 1976. Field checked 1978
 Map edited 1981

Projection and 1000-meter grid, zone 10.
 Universal Transverse Mercator
 10,000-foot grid ticks based on California coordinate system, zone 1. 1927 North American Datum
 To place on the predicted North American Datum 1983 move the projection lines 18 meters north and 94 meters east as shown by dashed corner ticks
 Certain land lines are omitted because of insufficient data
 There may be private inholdings within the boundaries of the National or State reservations shown on this map

CONTOUR INTERVAL 20 METERS
 NATIONAL GEODEIC VERTICAL DATUM OF 1999
 CONTROL ELEVATIONS SHOWN TO THE NEAREST 0.1 METER
 OTHER ELEVATIONS SHOWN TO THE NEAREST METER
 THIS MAP COMPLES WITH NATIONAL MAP ACCURACY STANDARDS

FOR SALE BY U.S. GEOLOGICAL SURVEY
 DENVER, COLORADO 80225, OR RESTON, VIRGINIA 22092

CONVERSION TABLE		DECLINATION DIAGRAM		ADJOINING MAPS		
Meters	Feet	1	2	3	4	5
1	3.2808	1	2	3	4	5
2	6.5617	4	5	6	7	8
3	9.8425					
4	13.1234					
5	16.4042					
6	19.6850					
7	22.9659					
8	26.2467					
9	29.5275					
10	32.8084					

To convert meters to feet multiply by 3.2808
 To convert feet to meters multiply by 0.3048

UTM grid convergence (GK) and 1981 magnetic declination (MD) at center of map
 Diagram is approximate

1	2	3
1	2	3
4	5	6
7	8	9

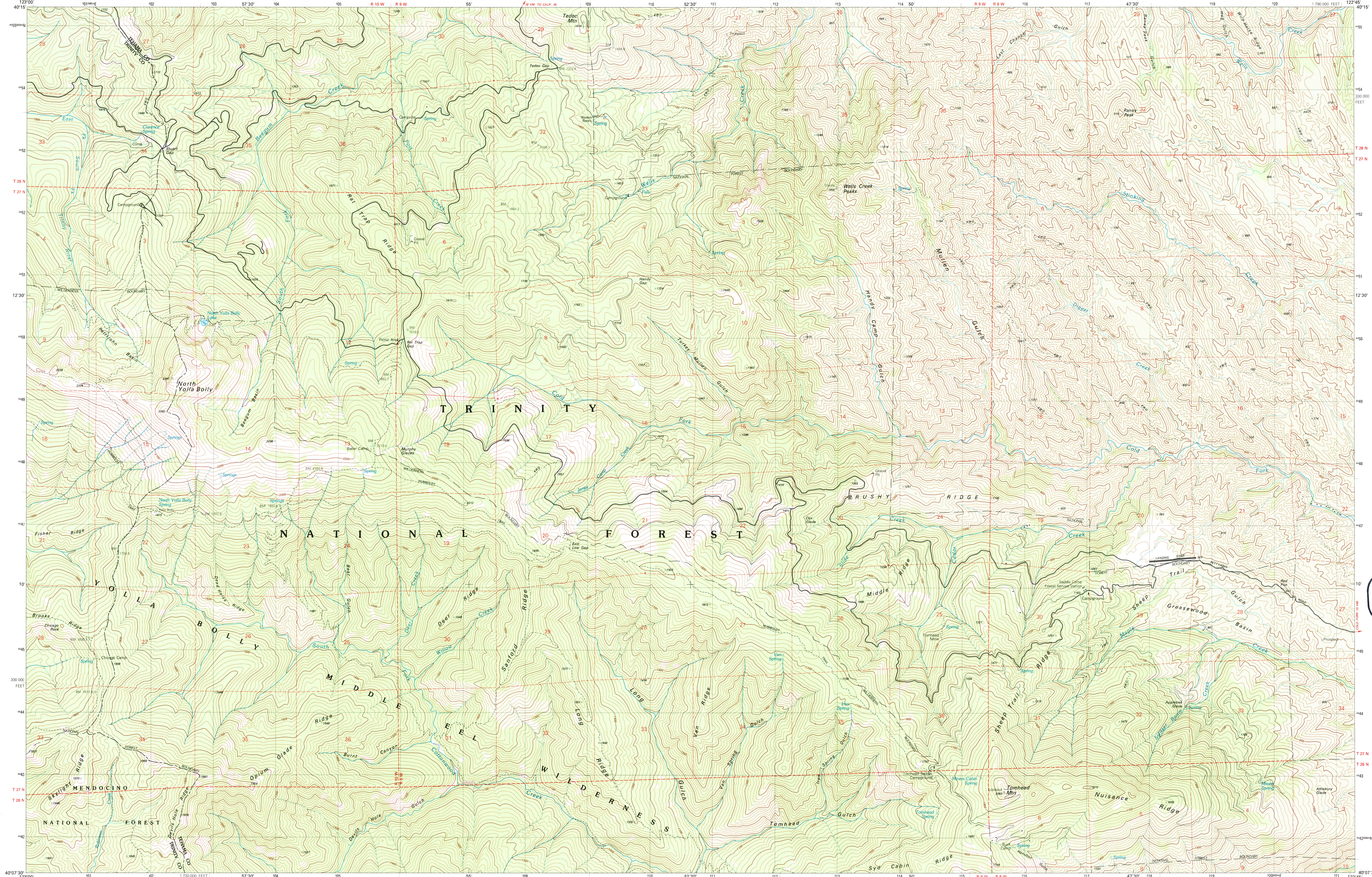
1 Pony Back Peak
 2 Chickabally Mtn.
 3 Black Rock Mtn.
 4 Cold Fork
 5 Four Corners Rock
 6 South Yolla Bolly
 7 Redline Ridge
 8 *124 000



Topographic Map Symbols

- Primary highway, hard surface
- Secondary highway, hard surface
- Light-duty road, hard or improved surface
- Unimproved road, trail
- Route marker: Interstate, U.S., State
- Railroad: standard gage, narrow gage
- Bridge: drawbridge
- Footbridge; overpass; underpass
- Built-up area: only selected landmark buildings shown
- House; barn; church; school; large structure
- Boundary: National, with monument; State; County, parish; Civil township, precinct, district; Incorporated city, village, town; National or State reservation; small park; Land grant with monument; found section corner; U.S. public lands survey: township, section; Range, township; section line: location approximate; Fence or field line; Power transmission line, located tower; Dam; dam with lock; Cemetery; grave; Campground, picnic area; U.S. location monument; Windmill; water well; spring; Mine shaft; prospect; salt or rock; township, section; Control: horizontal station; vertical station; spot elevation; Contours: index; intermediate; supplementary; depression; Distorted surface: strip mine, levee, sand; Bathymetric contours: lake; intermittent; Personal lake and stream; intermittent lake and stream; Rapids, large and small; falls, large and small; Swamp; marsh; Submerged marsh: land subject to controlled inundation; Woodland: scattered trees; Scrub; mangrove; Orchard; vineyard

A pamphlet describing topographic maps is available on request



SCALE 1:25 000
 1 CENTIMETER ON THE MAP REPRESENTS 250 METERS ON THE GROUND
 CONTOUR INTERVAL 20 METERS