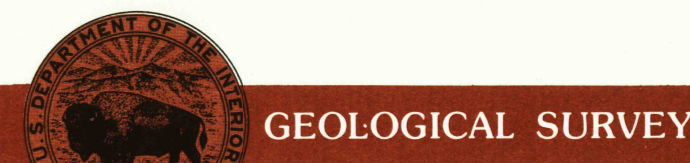




7.5 X 15 MINUTE QUADRANGLE SHOWING

- Contours and elevations in meters
- Highways, roads and other manmade structures
- Water features
- Woodland areas
- Geographic names



1981

Produced by the United States Geological Survey in cooperation with State of California
 Control by USGS and NOS/NOAA
 Compiled by photogrammetric methods from aerial photographs taken 1976. Field checked 1977
 Map edited 1981
 Projection and 1000-meter grid, zone 10, Universal Transverse Mercator
 10,000-foot ticks based on California coordinate system, zone 1, 1927 North American Datum
 To place on the predicted North American Datum 1983 move the projection lines 18 meters north and 94 meters east as shown by dashed corner ticks
 Fine red dashed lines indicate selected fence and field lines where generally visible on aerial photographs
 This information is unchecked

CONTOUR INTERVAL 10 METERS
 SUPPLEMENTARY CONTOUR INTERVAL 5 METERS
 NATIONAL GEODETIC VERTICAL DATUM OF 1929
 CONTROL ELEVATIONS SHOWN TO THE NEAREST 0.1 METERS
 OTHER ELEVATIONS SHOWN TO THE NEAREST METER

THIS MAP COMPLIES WITH NATIONAL MAP ACCURACY STANDARDS

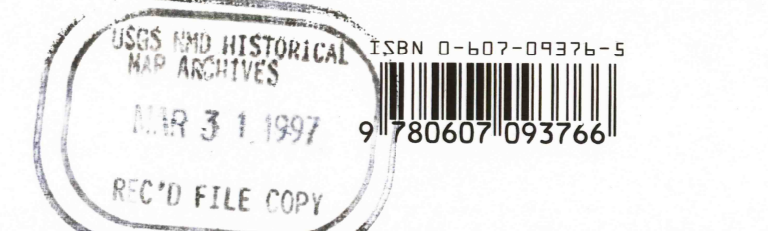
FOR SALE BY U.S. GEOLOGICAL SURVEY,
 P.O. BOX 25286, DENVER, COLORADO, 80225

CONVERSION TABLE		DECLINATION DIAGRAM		ADJOINING MAPS		
Meters	Feet	0°15'	1°15' M	1	2	3
1	3.2808			1	2	3
2	6.5617			4	5	
3	9.8425			6	7	
4	13.1234			8		
5	16.4042					
6	19.6850					
7	22.9659					
8	26.2467					
9	29.5275					
10	32.8084					

To convert meters to feet multiply by 3.2808
 To convert feet to meters multiply by 0.3048

UTM grid convergence (0°15' 1981 magnetic declination (MN) at center of map
 Diagram is approximate

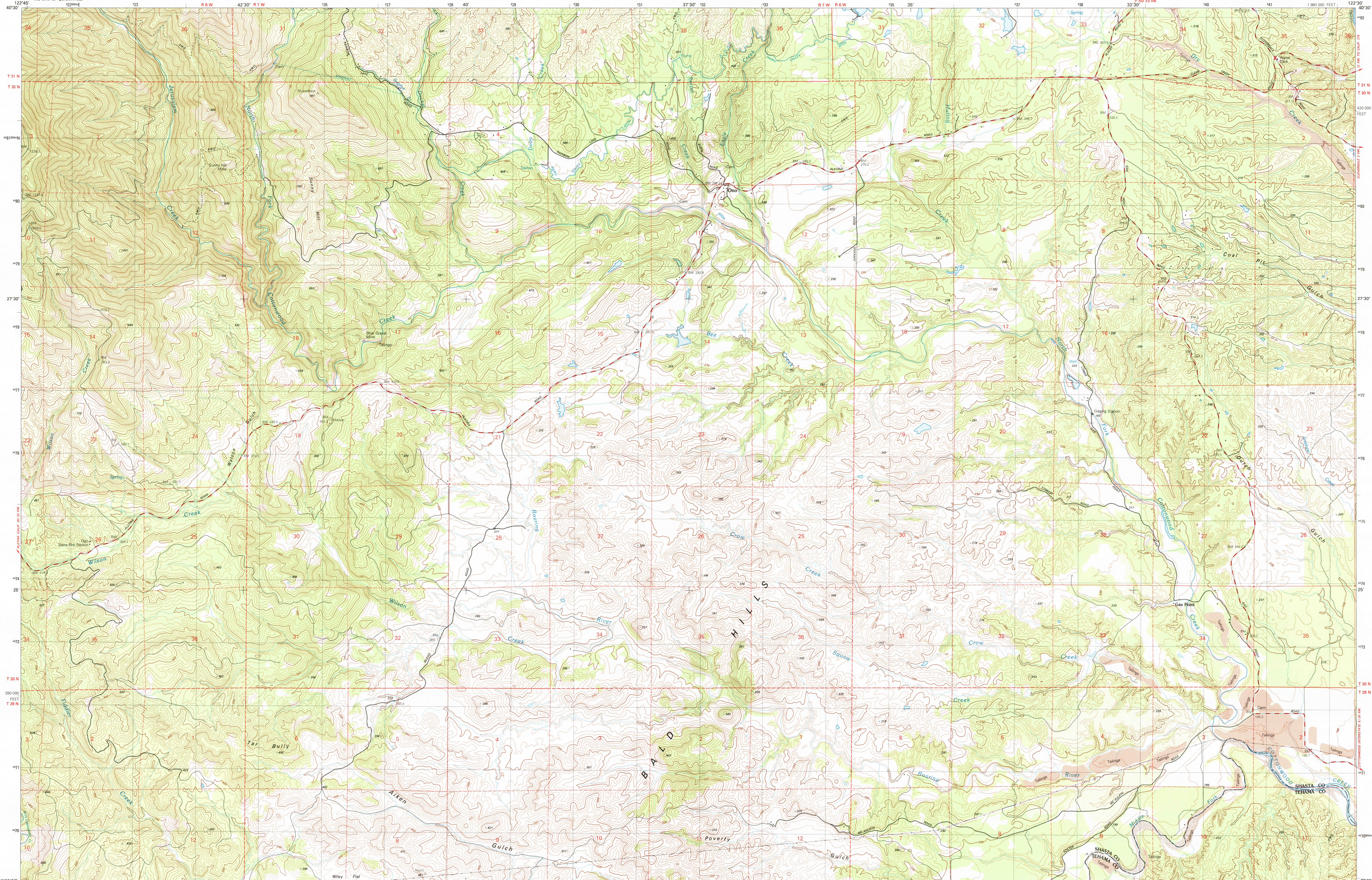
1 Weaverille**
 2 Shasta Falls*
 3 Redding*
 4 Chaucuilla Peak
 5 Olsden*
 6 Beavum
 7 Chickabally Mts.
 8 Mitchell Gulch*
 *1:24 000 **1:62 500



Topographic Map Symbols

- Primary highway, hard surface
- Secondary highway, hard surface
- Light duty road, hard or improved surface
- Unimproved road, trail
- Route marker: Interstate, U. S., State
- Railroad: standard gage; narrow gage
- Bridge, drawbridge
- Footbridge, overpass, underpass
- Built-up area: only selected landmark buildings shown
- House: barn; church; school; large structure
- National, with monument
- State
- County, parish
- Civil township, precinct, district
- Incorporated city, village, town
- National or State reservation; small park
- Land grant with monument; found section corner
- U. S. public lands survey: range, township, section
- Range, township, section line: location approximate
- Fence or field line
- Power transmission line, located tower
- Dam; dam with lock
- Canal; grave
- Compressed picnic area; U. S. location monument
- Windmill; water well; spring
- Mine shaft; prospect; adit or cave
- Control: horizontal station; vertical station; spot elevation
- Contour: index; intermediate; supplementary; depression
- Distorted surface: strip mine, lava; sand
- Bathymetric contours: index; intermediate
- Perennial lake and stream; intermittent lake and stream
- Barren, large and small; hills, large and small
- Swamp; marsh
- Submerged marsh; land subject to controlled inundation
- Woodland: scattered trees
- Scrub; mangrove
- Orchard; vineyard

A pamphlet describing topographic maps is available on request



SCALE 1:25 000
 1 CENTIMETER ON THE MAP REPRESENTS 250 METERS ON THE GROUND
 CONTOUR INTERVAL 10 METERS
 SUPPLEMENTARY CONTOUR INTERVAL 5 METERS

ONO, CALIFORNIA
 N4022.5-W12230/7.5
 1981