

RESTRICTED

CALIFORNIA
AMBOY QUADRANGLE

GRID ZONE "F"
N3400-W11500/60

TRAINING MAP
WAR DEPARTMENT
CORPS OF ENGINEERS, U. S. ARMY

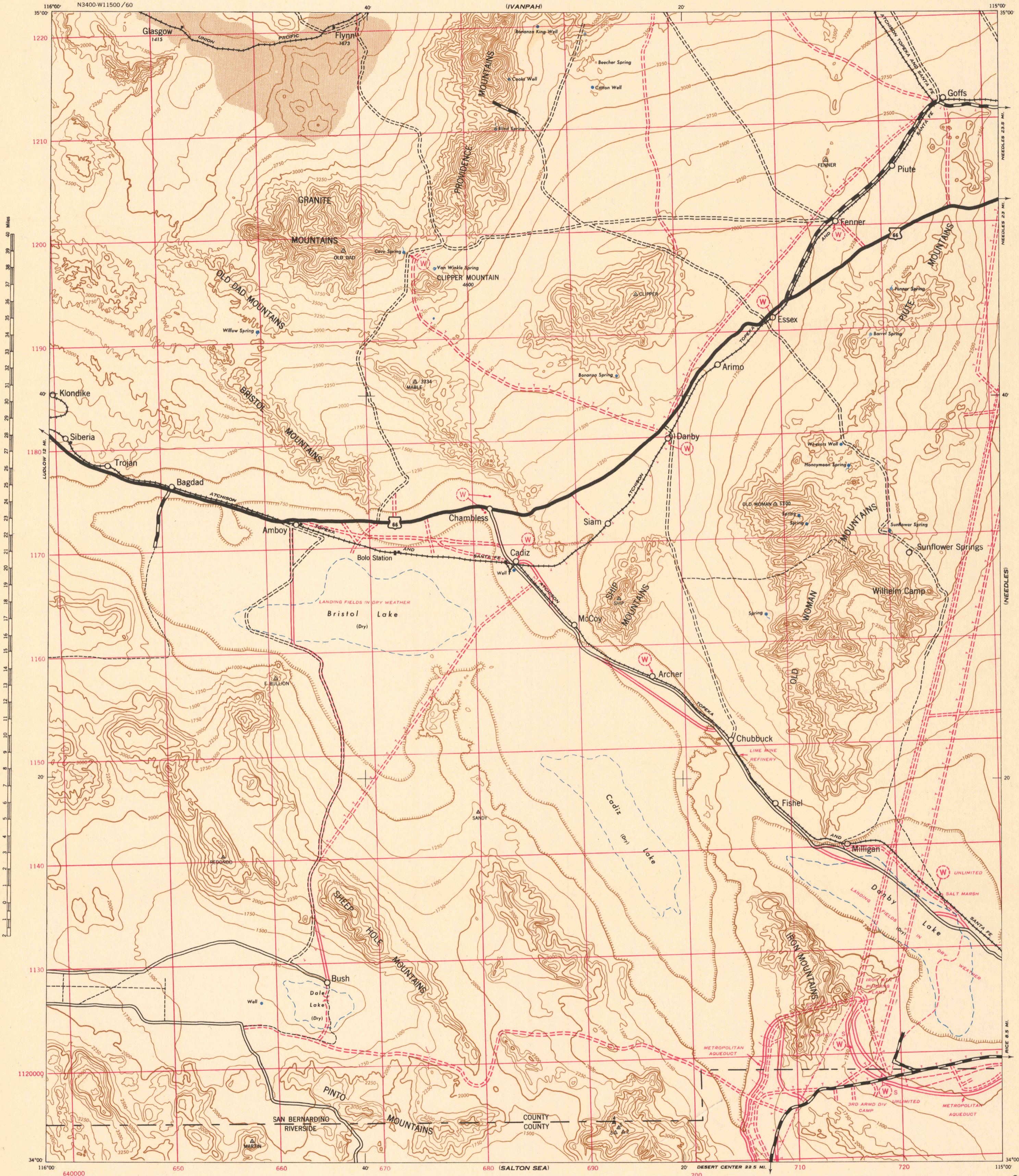
RESTRICTED

CALIFORNIA
AMBOY QUADRANGLE

GRID ZONE "F"
N3400-W11500/60

Advance edition
Subject to correction

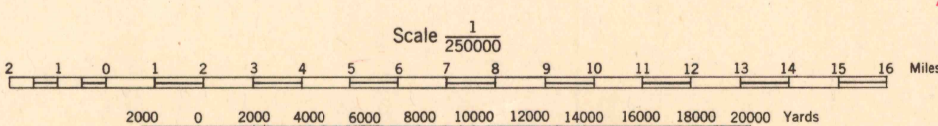
CAMP MOHAVE



Prepared under the direction of the Chief of Engineers, U. S. Army.
 Base compiled from U. S. Geological Survey Quadrangles.
 Control from U. S. Geological Survey.
 Revised from State Highway Maps for California.
 Polyconic Projection, North American Datum 1927.

ROAD CLASSIFICATION
 Loose surface graded, heavy-duty road. U. S. Route 160
 Secondary, hard-surface, all-weather road. State Route 30
 More than two lanes indicated by note along road with tick at point of change. 2 LANE | 4 LANE

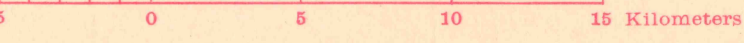
W WATER POINT
 W WITH SHOWERS



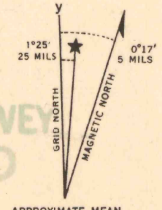
CONTOUR INTERVAL 250 FEET
 DATUM IS MEAN SEA LEVEL

TEN THOUSAND METER GRID CONVERTED FROM "GRID SYSTEM FOR PROGRESSIVE MAPS IN THE U. S." ZONE F, U. S. C. & G. S. SPECIAL PUBLICATION NO. 59 (THE LAST THREE DIGITS OF THE GRID NUMBERS ARE OMITTED)

NOTE: OFFICERS USING THIS MAP WILL MARK HEREON CORRECTIONS AND ADDITIONS WHICH COME TO THEIR ATTENTION AND MAIL DIRECT TO "THE CHIEF OF ENGINEERS, WASHINGTON, D. C."



RECEIVED
 FEB 3 - 1951
 MAP INFORMATION OFFICE



ARMY MAP SERVICE, WASHINGTON, D. C. 10142
 REPRINTED BY 28TH ENGR. REPRODUCTION PLANT, PORTLAND, OREGON, 1942.

CULTURE REVISIONS SHOWN IN RED BASED ON RECONNAISSANCE BY 6TH ENGR. CO. (TOP.) MAY NOT BE OF SAME ACCURACY AS BASE MAP

RESTRICTED
 AMBOY, CALIF.
 N3400-W11500/60

CLASSIFICATION CANCELLED BY
 AUTHORITY OF CHIEF OF ENGINEERS
 LETTER OF
 JAN 22 1946