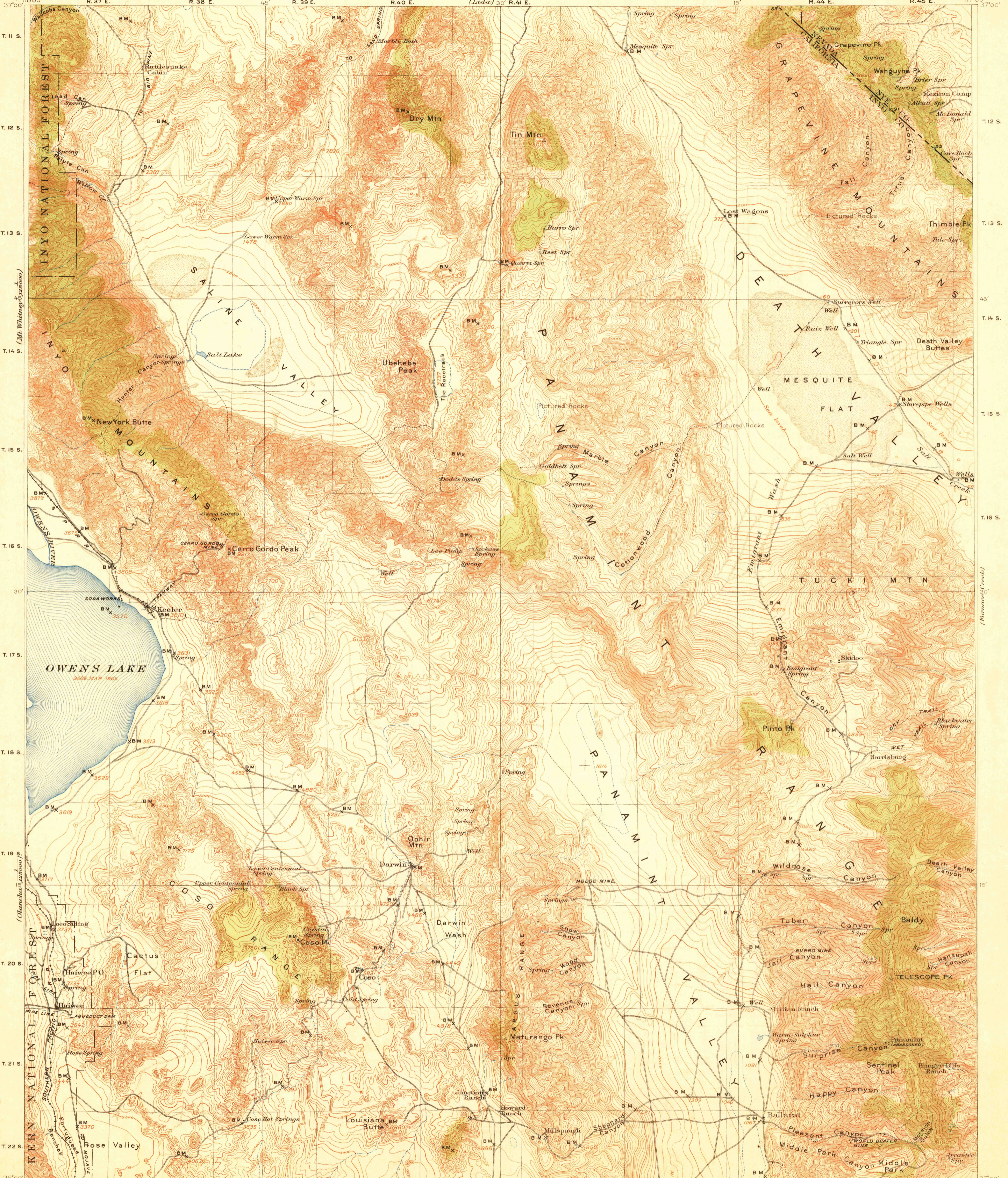


TOPOGRAPHY

CALIFORNIA - NEVADA
BALLARAT QUADRANGLE

U.S. GEOLOGICAL SURVEY
GEORGE OTIS SMITH, DIRECTOR



R. B. Marshall, Chief Geographer.
 E. M. Douglas, and T. G. Gardine, Geographers in charge.
 Topography by R. H. Chapman, J. E. Blackburn, B. D. Stewart,
 D. F. C. Moor, and T. P. Pendleton.
 Control by R. H. Chapman, D. F. C. Moor, C. F. Urquhart,
 R. A. Farmer, and L. F. Biggs.
 Surveyed in 1905-1906 and 1910-1911.

Scale 1:50,000



Contour interval 100 feet.

Datum is mean sea level.

Edition of Mar. 1913.

USGS JUN 30 1913
 Historical File
 Topographic Division

3068

BALLARAT