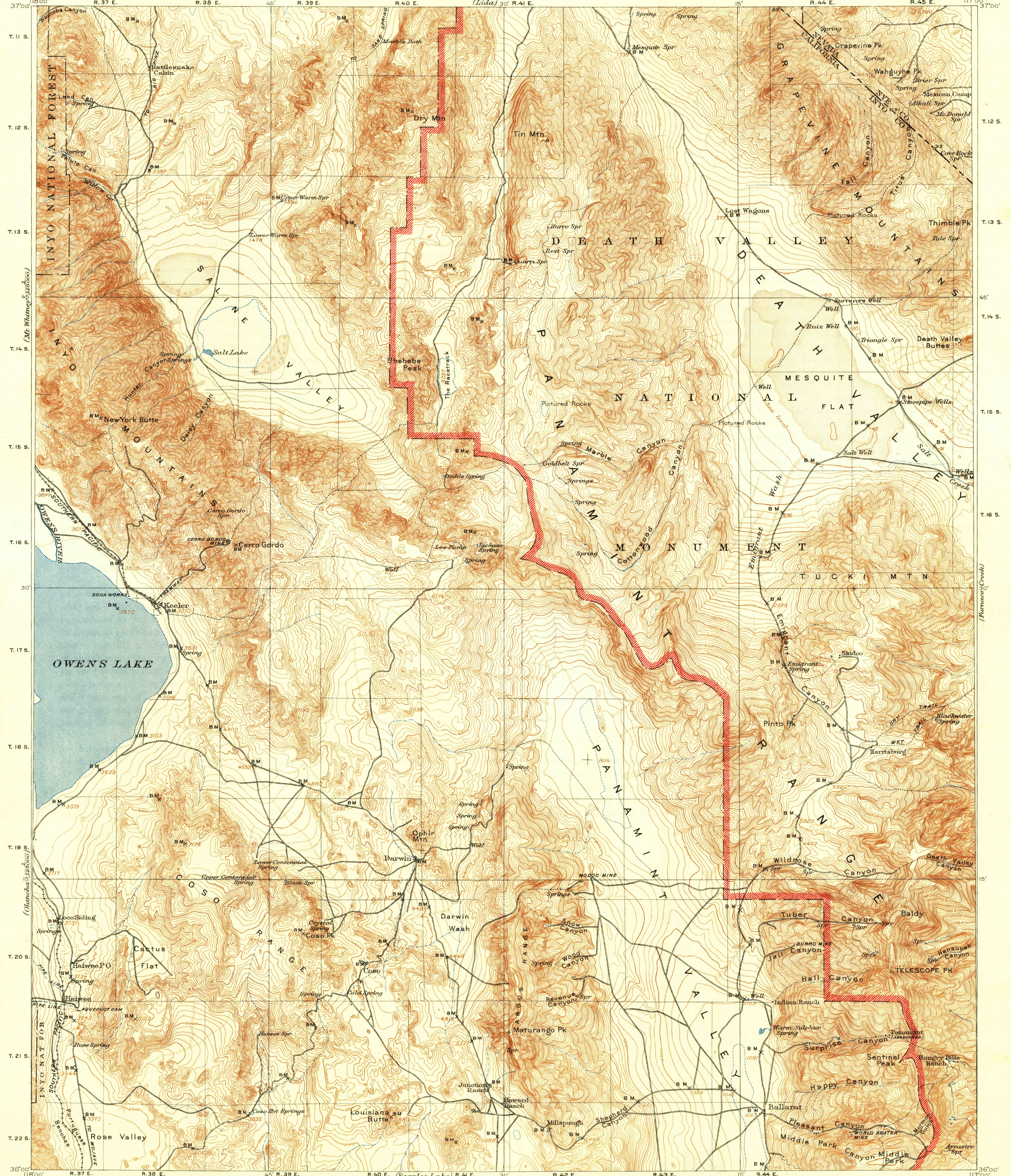


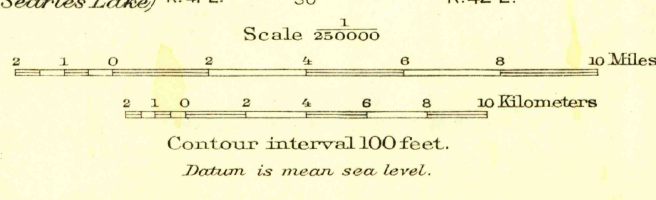
U.S.G.S.  
FILE COPY  
Transcribing and Editing

UNITED STATES  
DEPARTMENT OF THE INTERIOR  
GEOLOGICAL SURVEY

CALIFORNIA - NEVADA  
BALLARAT QUADRANGLE



R.B. Marshall, Chief Geographer.  
E.M. Douglas, and T.G. Gardine, Geographers in charge.  
Topography by R.H. Chapman, J.E. Blackburn, B.D. Stewart,  
D.F.C. Moor, and T.P. Pendleton.  
Control by R.H. Chapman, D.F.C. Moor, C.F. Unquhart,  
R.A. Farmer, and L.F. Biggs.  
Surveyed in 1905-1906 and 1910-1911.



Edition of Mar. 1913, reprinted 1947  
Polyconic projection, North American datum.

BALLARAT, CALIF.-NEV.  
N3600-W1700/80

USGS  
Historical File  
Topographic Division  
Inspection and Editing.

AUG 20 1947

5460