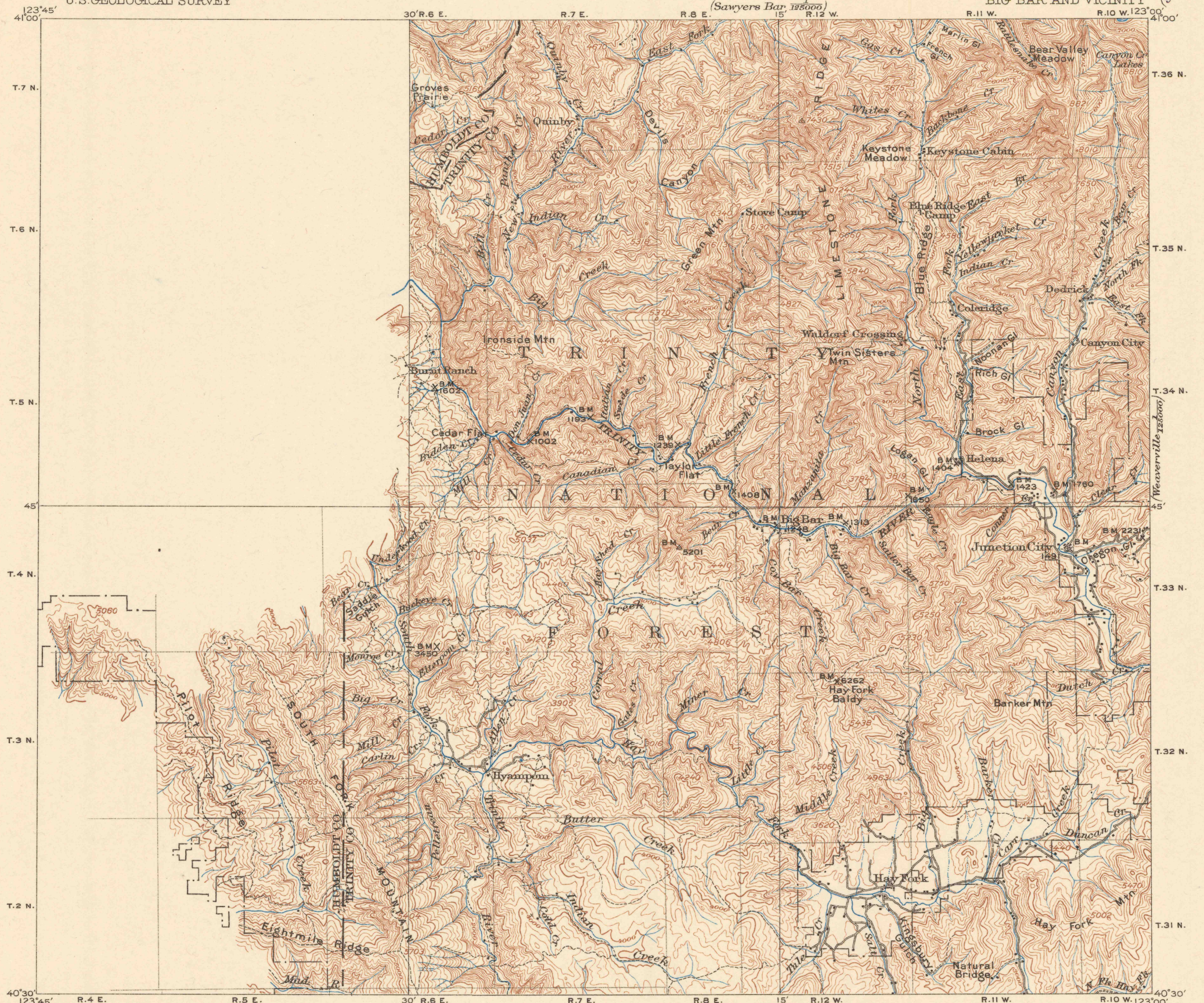
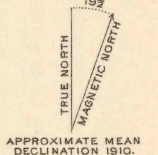
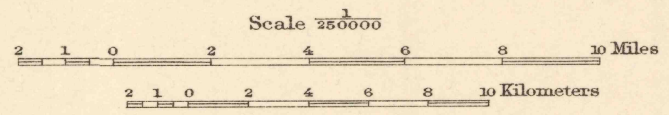


(Shasta)



R.B. Marshall, Chief Geographer.
T.G. Gardine, Geographer in charge.
Topography by J.P. Harrison.
Control by C.F. Urquhart, A.I. Oliver, L.F. Biggs,
and G.C. Jacobs.
Surveyed in 1907 and 1909-1911.



Edition of July 1915, reprinted 1930.
Polyconic projection, North American datum