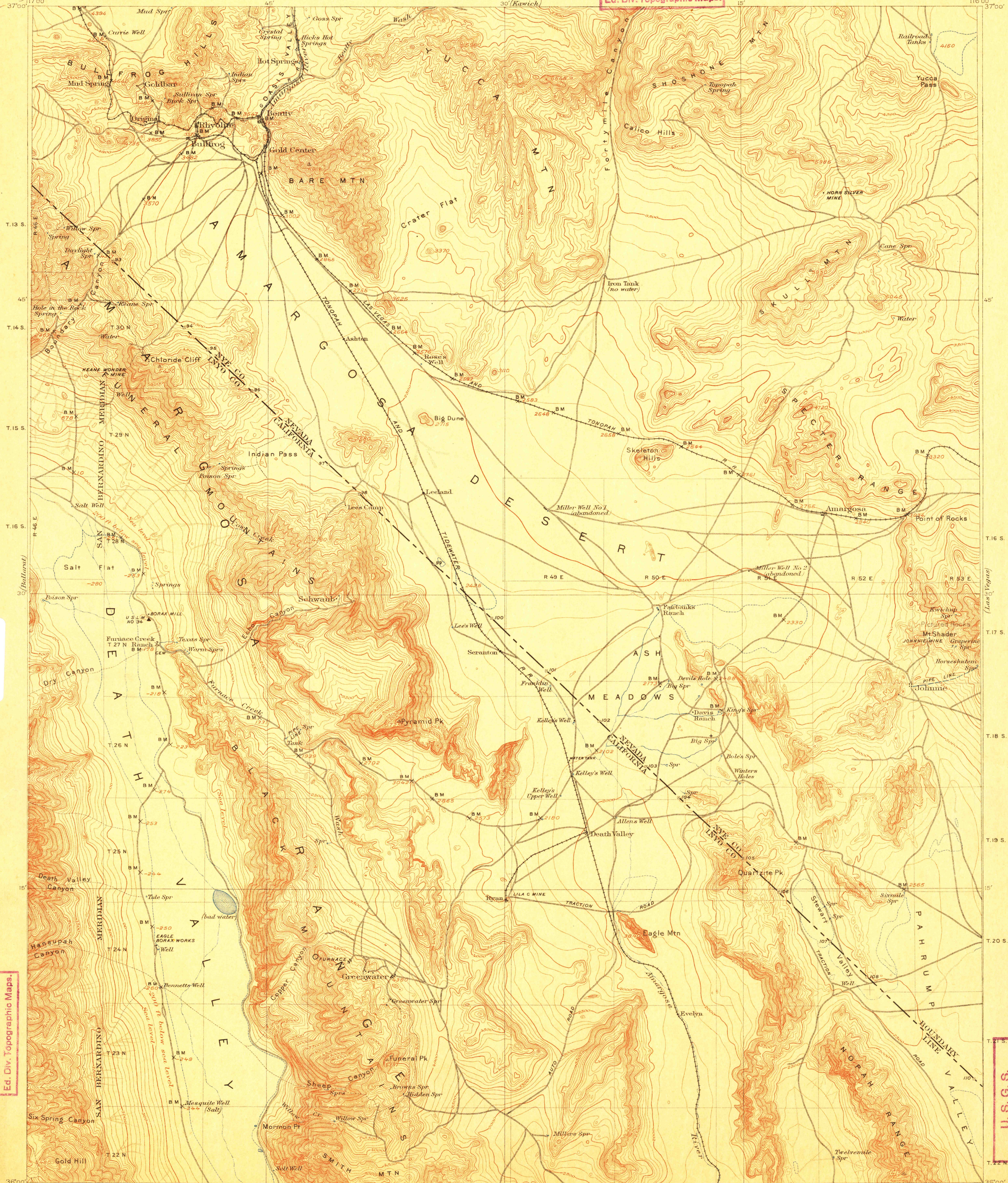


TOPOGRAPHY

U. S. G. S. FILE COPY Ed. Div. Topographic Maps.

CALIFORNIA-NEVADA FURNACE CREEK QUADRANGLE

U.S. GEOLOGICAL SURVEY GEORGE OTIS SMITH, DIRECTOR

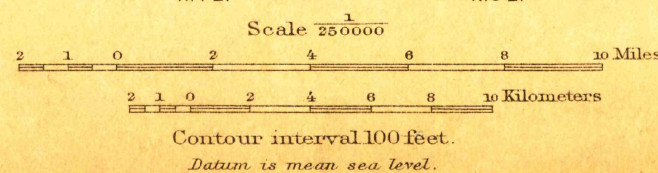


USGS Library Reston, VA. Topo Archive

U. S. G. S. FILE COPY Ed. Div. Topographic Maps.

U. S. G. S. FILE COPY Ed. Div. Topographic Maps.

E. M. Douglas, Geographer. R. H. Chapman, in charge of section. Topography by R. H. Chapman, B. D. Stewart, J. E. Blackburn, and D. F. Moor. Triangulation by R. H. Chapman and D. F. Moor. Surveyed in 1905-1906.



Chapman and Stewart

USGS Historical File Topographic Division MAY 10 1910 3572

Edition of Apr. 1910.

FURNACE CREEK, CALIF.